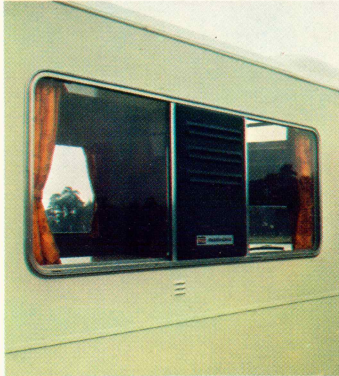
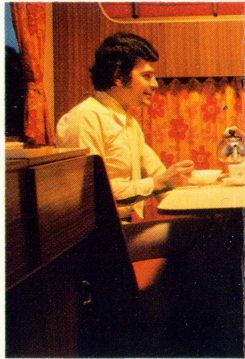
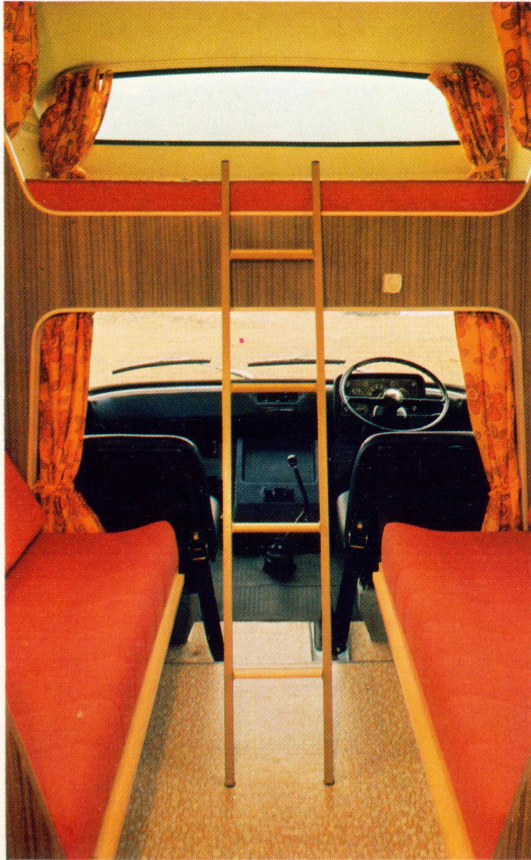
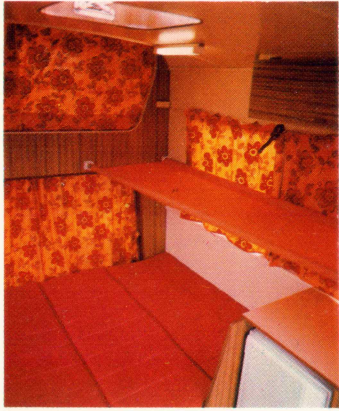




# BEDFORD



**MOTORHOME**



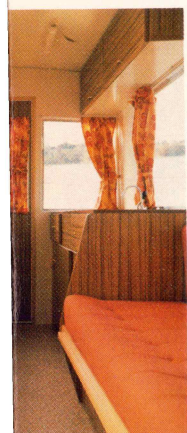
## Motorhome

Here is the latest concept in motor caravans—the Bedford Motorhome by CI Autohomes. A superb blend of style, space and luxury combined in one of the most distinctive caravan bodies to be seen on the roads of Europe, and mounted on the rugged Bedford CF chassis.

The Motorhome is ingeniously practical, too. That compartment over the cab is a complete, self-contained bedroom large enough to take an adult or two children. At night a curtain can be drawn across leaving the full use of the caravan's facilities to be enjoyed by the other occupants.

A rollaway bunk is also provided, and the two side settees are quickly converted into a superbly comfortable double bed measuring 6ft 3in x 4ft 3in. Yet, even when the bed is made, the kitchen area is still left unobstructed—for making morning tea or cooking breakfast. Leisure living with a difference!





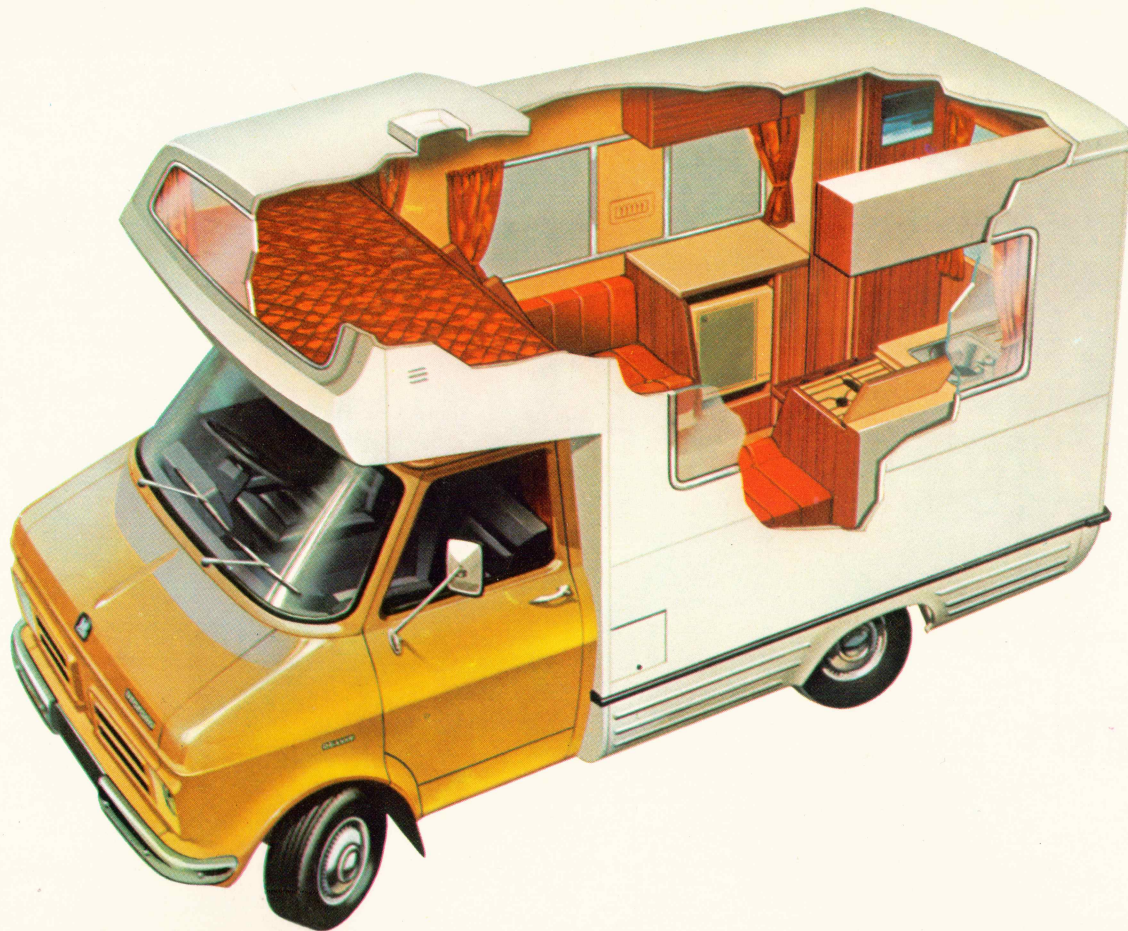
All working surfaces are heat resistant and wipe clean. There's a cooker with two burners and a grill; a deep sink with drainer fed by a pump drawing water from a large 16 gallon plastic water tank, and—as an optional extra—a refrigerator is available. Generous-sized cupboards, lockers, and a drawer provide ample storage space, and a toilet compartment is provided at the rear of the Motorhome *in addition to* the wardrobe.

Deep side windows with ventilator sections are draped with gay-patterned curtains, generously cut to give complete privacy when drawn across. Two fluorescent lights give controlled illumination at night. And whatever the weather outside, the Motorhome's occupants inside are well protected—the caravan body is fully insulated.

Access to the de luxe cab is unobstructed. Behind the wheel note the easily reached controls, the commanding driving position and the car-type trim throughout. On the road, smoothness predominates—from the rack and pinion steering to the silky smooth four-speed synchromesh gearbox and the powerful 2.3 litre overhead camshaft engine.

Motorhome is indeed a winning combination of style, comfort and practicality.





#### Chassis specification

Bedford CF 22 cwt chassis-cab with de luxe cab, passenger cab seat, raised suspension, cab interior mirror, spare wheel and tyre, servo assisted brakes.

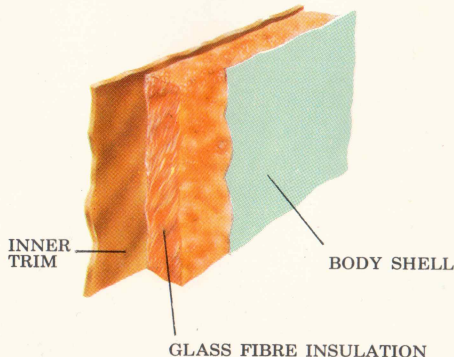
#### Body specification

Cooker with two burners and grill. Sink with drainer fed with fresh water from a 16 gallon/72 litre water tank with interior filler. Heat resistant working surfaces. Toilet compartment has light, ventilator and double hinged door which extends to enlarge floor area. Dinette seating/double bed with upholstered cushions and storage beneath. Folding leg, free standing table with heat resistant surface. Two fluorescent lights. Safety glass windows, side windows have opening panels. Two side ventilators. Opening skylight. Interior steps double as safety barrier for over-cab bed area. This area is fully upholstered and curtained, and has its own ventilation. Vented gas bottle storage for two bottles with exterior access. Storage units include wardrobe, underseat lockers, cupboards, cutlery drawer, high level

lockers. Interior is fully curtained including cab access. Rollaway bunk. Fixed rear step.

#### Body construction

Side and end frames from timber with pre-painted aluminium outer skin insulated with glass fibre. Roof has timber rafters with one-piece GRP roof, insulated with glass fibre. Fir ply bulkhead with simulated woodgrain facing panel. Floor is of composite construction and covered with hard wearing vinyl. Fir ply, one-piece floor over-cab.



#### Extra equipment

Refrigerator; fly screens; sealed-lid chemical toilet.

#### DIMENSIONS

##### Exterior

Overall length	190in/4826mm
Overall width	83in/2108mm
Overall height	108in/2740mm

##### Interior

Length behind driver	109.75in/2971mm
Width	75.50in/1918mm
Height (max)	73.75in/1873mm

##### Bed Size

Over-cab bed	71.50 x 37.75in/ 1816 x 959mm
Main bed	75.25 x 51.00in/ 1911 x 1295mm
Rollaway bunk	72.00 x 23.50in/ 1829 x 597mm

Vehicle Weight 32cwt/1626kg (approx)



Vauxhall Motors Ltd., Luton, Beds., England.  
Printed in England. Imprime en Angleterre.  
The right is reserved to alter any detail of price specification or equipment without prior notice.  
81632-2-74

**GI AUTOHOMES**

500 Ringwood Road, Parkstone, Poole,  
Dorset, England.

Tel : Parkstone 748494. Telex : 41342.