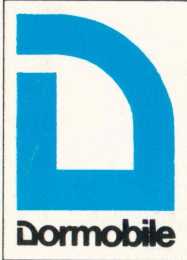


BEDFORD



DORMOBILE FREEWAY



Freeway

Luxury on wheels

Built on the versatile Bedford CF chassis, the Dormobile Freeway is a graceful yet sturdy, stylish yet superbly practical, form of transport. Smart contours, glistening exterior, and everywhere those subtleties resulting from years of experience in the business — all-weather roof and body insulation, touches of chrome, neat mirror-faced, illuminated cabinet with the mirror adjustable for angle.

In a mobile home, comfort results from a harmony of space and facilities — and the Freeway has its par excellence. Comfortable seating — driver and front passenger seat, luxurious Dormobile seating plus two cabinet front-facing seats with optional infill occasional seat for the larger family (up to 6) to face forward — alternatively the rear seats can become double inward-facing.

Comfortable living — table, sink with draining board, underfloor water tank, cooker unit, wardrobe, ample cupboard and storage space, cutlery drawer. Not an inch of space is overlooked — witness the storage built into the rear doors, and the vacuum flask holder expertly housed in the right hand rear pillar. Space too for the optional Electrolux refrigerator.

Comfortable sleeping — seating arrangement quickly and easily converted into one double or two single beds. Two bunks in the roof give ample sitting-up room, and there's an optional bunk in the cab for a child. Yet, while the rest of the family sleeps, you can still wash, dress or cook — in comfort again.



EXCEPTIONAL FACILITIES ARE STANDARD IN THE FREEWAY

Latest Dormobile roof, uniquely side-hinged to give 8' headroom, fully lined to eliminate condensation (patents pending), opening roof-vents and windows incorporated. The Tan-Top's striking new canopy material is in white with bold stripe in brown and gold. ● Twin 6' 0" roof bunks with extra width, thanks to Dormobile's spacious roof — no tapering off at the feet end, and still ample room between bunks for easy access. ● Sumptuous Dormobile seating trimmed in nylon and wool tweed. ● Carpeting throughout — rear compartment mat easily removable to reveal an attractive Vynolay floor-covering. ● Light wood grain Melamine laminate finish to all cabinetwork — not only working surfaces. ● Water electrically

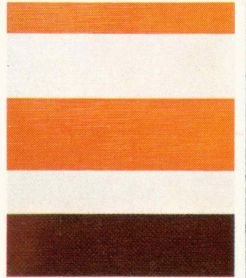
pumped to the sink from a 12 gallon underfloor tank. ● Double burner (with simmer control) and grill — ventilated locker with space for two 6lb Gaz bottles. ● Contoured roof-rack over cab. ● Choice of body colours from the Dormobile range, including the latest style created by the Tan Top — not painted on, but impregnated within the resin — bonded glass fibre. ● Servo brakes, 4 speed all synchromesh gearbox, and front seat belts. ● De Luxe cab trim with rosewood-laminated dash. ● Fabulous Dormobile materials — curtains of flameproof Dynel fibre, shrinkproof, fade-proof, in a colour choice of Oatmeal, Green or Orange. Gold or Brown carpeting. ● . . . all this and more — come and see for yourself.

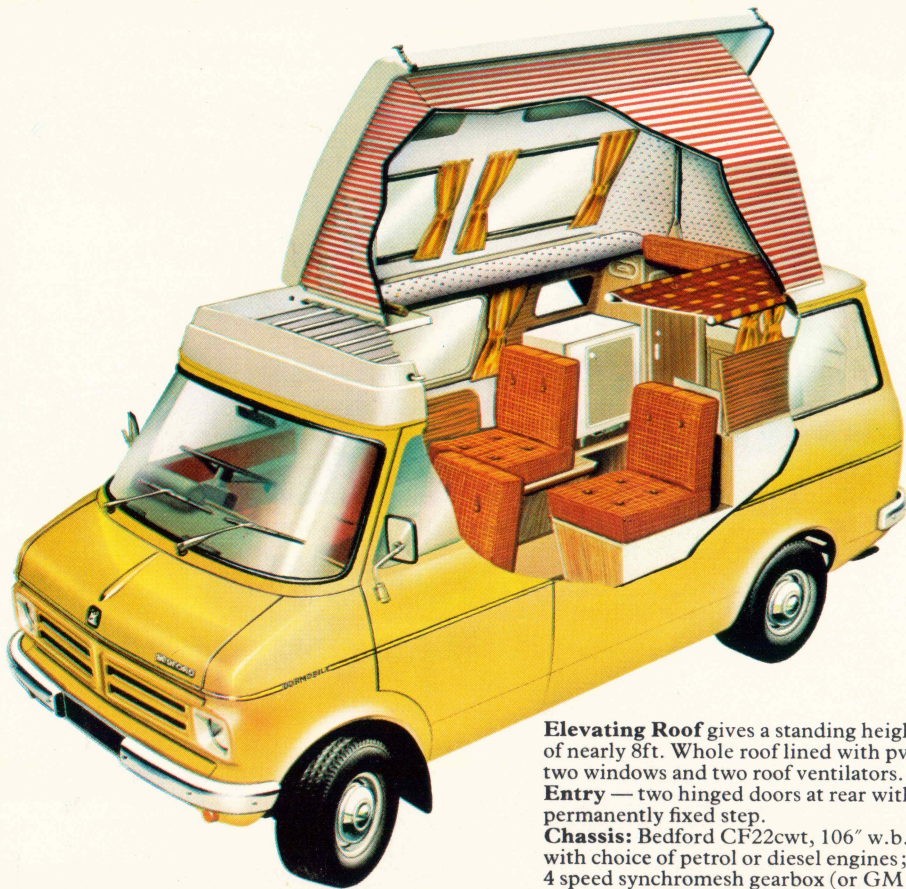




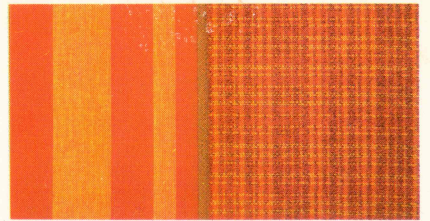
New tan top Freeway

The roof, of course, is Dormobile's unique creation, and with the latest model — the Tan Top Freeway — this sleek roof design gets an exciting new touch of colour which transforms the Dormobile into a smart man-about-town vehicle when not in its holiday role.

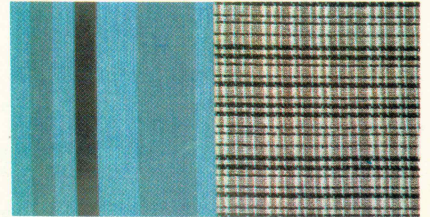




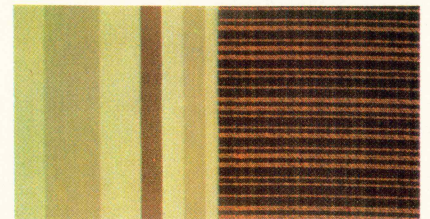
Elevating Roof gives a standing height of nearly 8ft. Whole roof lined with pvc; two windows and two roof ventilators.
Entry — two hinged doors at rear with permanently fixed step.
Chassis: Bedford CF22cwt, 106" w.b. with choice of petrol or diesel engines; 4 speed synchromesh gearbox (or GM automatic with petrol engine); servo-assisted hydraulic brakes.



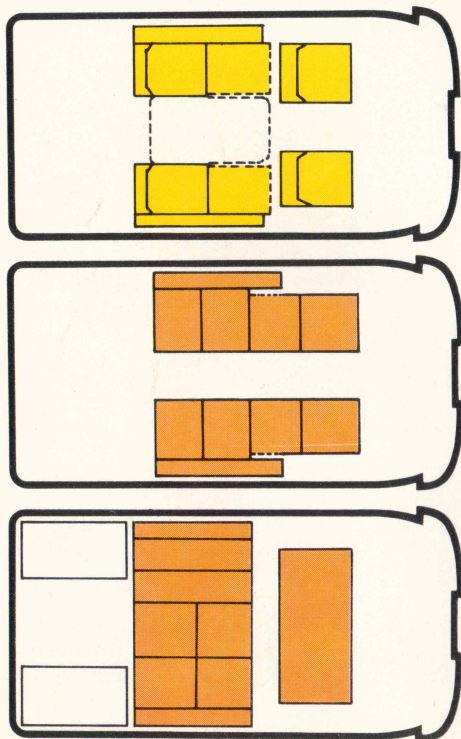
Orange interior trim



Oatmeal interior trim



Green interior trim



Seating and Bedding: 4 to 6 passengers seated and up to 5 sleeping. Passenger seat tips for access to rear of vehicle. Behind front seats are two forward facing cabinet seats which can become inward facing or turned into a 72" x 36" double bed. Alternatively, the front seats together with the double seats make two supremely comfortable single beds.

Sink and cooker: faced in Melamine throughout; two hinged lids; Perspex sink and draining board; electric pump and 12 gallon plastic underfloor water tank with flush outlet; twin burner and grill cooker. Three cupboards and cutlery drawer.

Wardrobe: faced in Melamine and lockable. Drawer and full-length hanging space; extending hanging rail.

Windows: full length window on left side, and to wardrobe unit on right side. Winged vent in centre of left side window.

Curtains: attractive yellow curtains on easy glide rails. Detachable front screen curtain.

Floor covering: welted edge carpet plus rubber foot mats in cab. Body carpets removable to reveal attractive Vynolay.

Dining: woodgrain Melamine surfaced table stored between runners in cab ceiling; screw-on legs stored in wardrobe.

Gas bottles: accommodation for two 6lb bottles in special locker.

Interior lighting: fluorescent above left hand rear seat. Standard Vauxhall lights in cab and over vanity mirror.

Seat belts: for driver and front passenger.

Other features: dressing table storage unit or

refrigerator (optional extra); cupboards in rear doors; roof rack to match elevating roof; holder to take vacuum flask in rear door pillar.

Paintwork: Dormobile White, Garnet Starmist Metallic (extra cost) or Harvest Yellow with contrasting coach line.

Trim: Seating is trimmed in Nylon and wool tweed. Curtains are a full one and a half widths and made up from flameproof Dynel fibre the new shrinkproof and fade proof material to match the trim colours — a choice of oatmeal, green or orange. Carpeting is gold or brown. With the Tan-Top is introduced a striking new canopy material in white with bold block stripes in brown and gold. Exclusive fascia panel in rosewood Melamine with soft black trim forming shelf and glove locker. Engine cowl cover.

Optional Extras: child's cab bunk. Commode type freestanding stool. Porta-Potti. Push-button Radiomobile. Towbar incorporated in step. Occasional forward facing seat.

Dimensions:

Overall length:	175"
Overall (unladen) height:	83.5"
Overall width (hinged doors):	80"
Interior height (roof up):	94"
Interior height (roof down):	55.5"
Overall height (roof up):	127"
Mean interior width at waist:	66"
Single bed length:	76"
Weight: Kerb weight:	3344lbs

The policy of Dormobile is one of continuous development and they reserve the right to change specifications and prices without notice.



Published by
VAUXHALL MOTORS LTD, LUTON, ENGLAND
 Printed in England
 Imprimé en Angleterre
 Freeway
 Publication B1643/6/74



Dormobile Limited
Folkestone, Kent
Telephone: 0303 76321

A member of the Charringtons Group.

Dormobile is a registered Trade Name.