



THE XK COLLECTION

JAGUAR



The new XK combines Jaguar's legendary performance, with advanced technologies and sporting luxury to create a grand tourer with the heart and soul of a sports car.

DESIGN	4
PERFORMANCE	18
CRAFTSMANSHIP	24
TECHNOLOGY	30
THE XK COLLECTION	40
SPECIFICATION	64



DESIGN

Some cars are engineered for speed and performance, some for beauty and some for the advanced technology of the future. The new Bentley Continental GT is ever more...

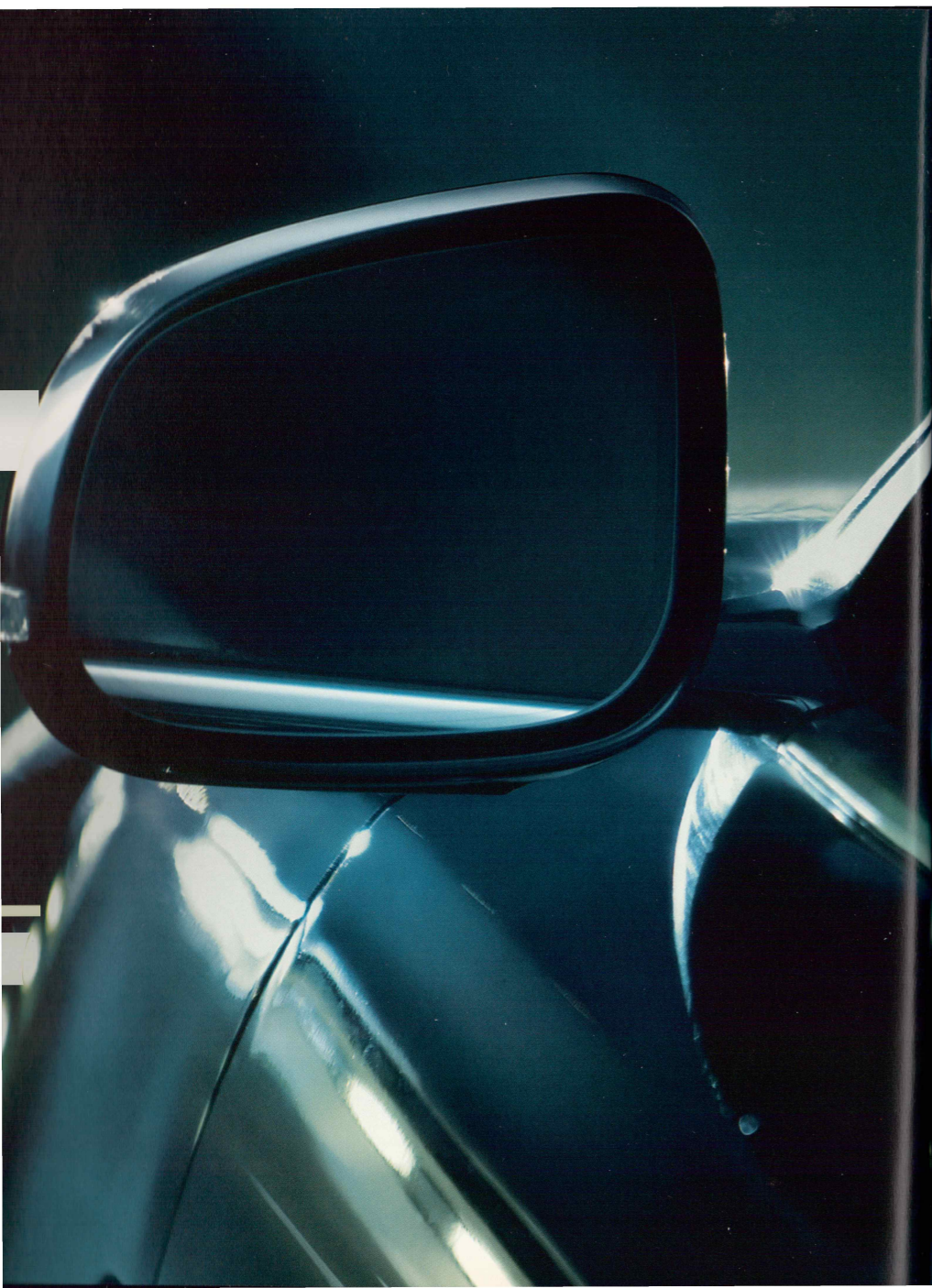
Even standing still, the new Continental GT is a sight to behold. With its 510PS supercharged, its sleek lines and its distinctive grille, it has never looked this seductively beautiful.

Visual energy is created by the car's design, that gives the new XK its reputation for speed and driving excitement. It's the result of the front grille opening...

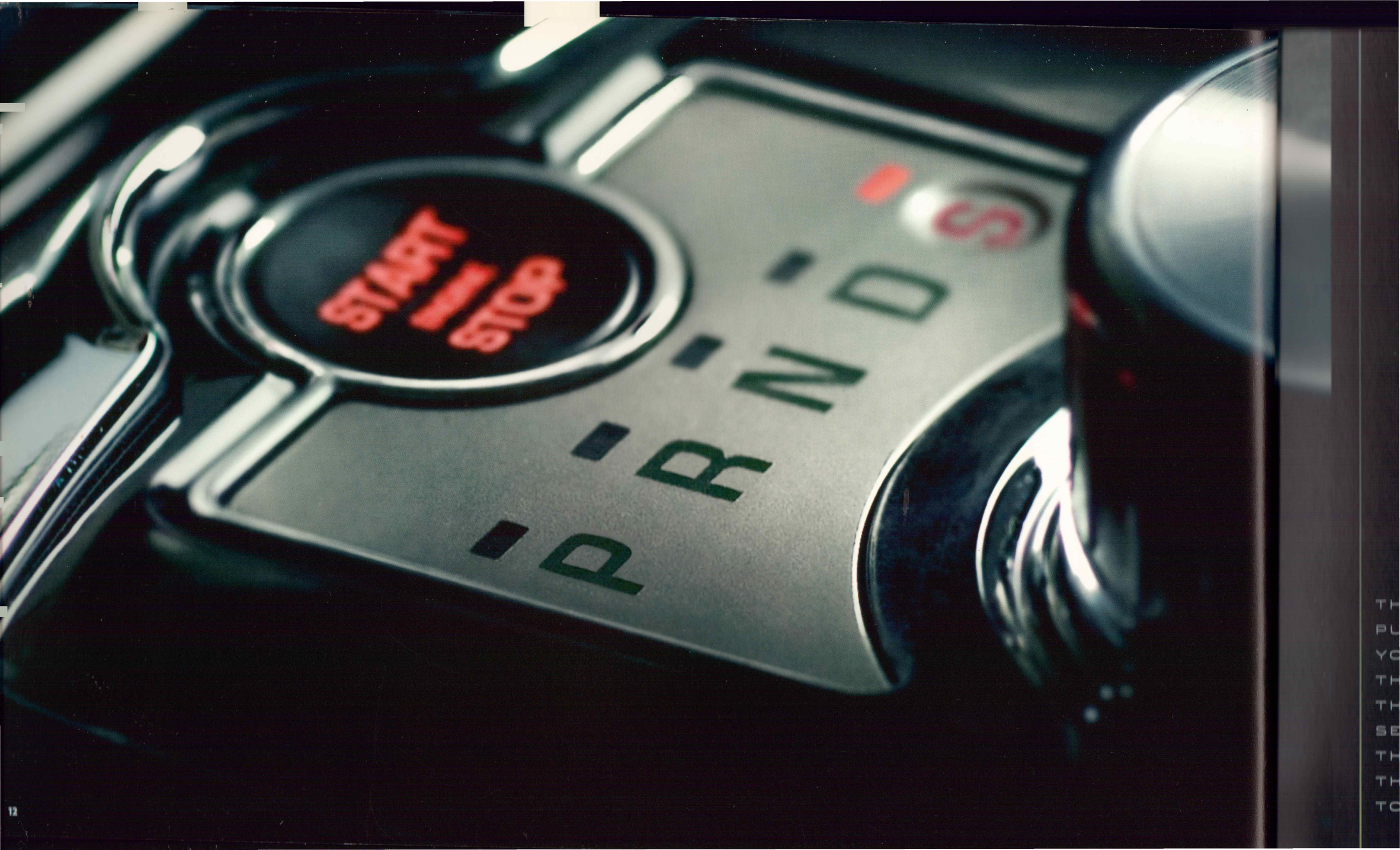
And to reflect the heightened performance, the front grille has been redrawn to be even more aggressive, with chrome detailed air inlets. The new Continental GT so effortlessly fulfils the design brief. This is the new XK. This is the new Bentley.



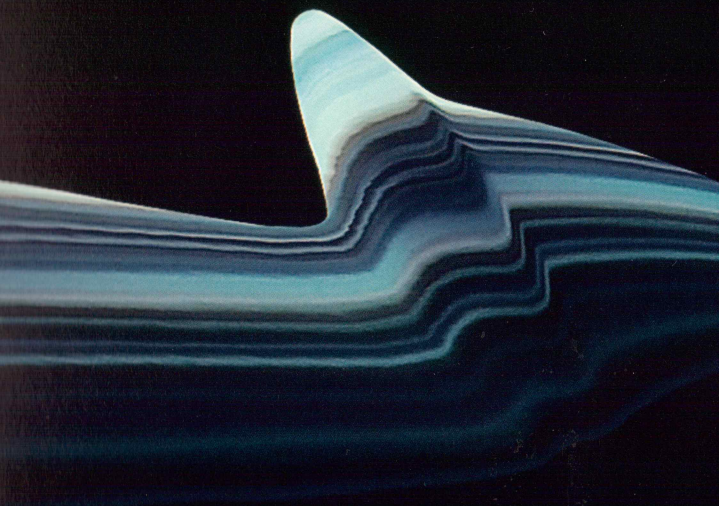
REAR LIGHT CLUSTER  
WITH FIFTY FIVE  
INDIVIDUAL LEDS







TH  
PL  
YO  
TH  
TH  
SE  
TH  
TH  
TO



ALL-ALUMINIUM CONSTRUCTION  
LIGHTNESS WITH EXCEPTIONAL RIGIDITY  
DYNAMIC SPORTS CAR PERFORMANCE





# Beneath its aluminium skin, the new XK's racing heart beats faster, stronger, courtesy of two all-new advanced and highly efficient 5.0 Litre AJ V8 GEN III engines.

It's a combination of aerospace-derived lightness, greater power and engineering excellence that delivers even more exhilarating performance with exceptional efficiency. Whilst the technology is complex, the reason we pioneered aerospace all-aluminium construction is simple: less weight, coupled with high strength and rigidity, is the key to making a truly great sports car. In fact the XK's all-aluminium monocoque bodyshell is fundamental to the way it performs. When compared with a conventional steel body, it delivers faster acceleration, more precise handling, shorter stopping distances and greater fuel efficiency.

And now, with the introduction of two all-new 5.0 Litre direct injection V8 engines offering substantial increases in power and torque, performance is shifted from merely exceptional to truly extraordinary. Jaguar's new naturally aspirated 5.0 Litre V8 powers the XK and XK Portfolio models. It produces 385PS – an impressive 29 percent increase versus the previous-generation XK V8 engine – and delivers acceleration from 0-100kph in just 5.5 seconds.

The high performance XKR is powered by the new supercharged 5.0 Litre V8. This remarkable engine delivers a muscular 510PS – a 23 percent increase over its predecessor – and can take XKR from 0-100kph in a breathtaking 4.8 seconds. Yet our engineers have been able to deliver these dramatic increases in power, and corresponding increases in torque, whilst at the same time improving fuel economy and reducing CO<sub>2</sub> emissions.

The responsiveness of our new engines is matched only by the smoother, more refined, more eager performance of an all-new, class-leading ZF 6HP28 automatic transmission. This lightning-fast 6-speed represents the very latest in transmission technology, incorporating innovative features such as a fully adaptive shift system, to smooth out and refine the shift quality, and enhance the driving experience. For maximum driver involvement and total control, gears can be selected manually using paddle shifters mounted behind the steering wheel.

It's a driving experience designed to be exceptional.



**5.0/V8/SC/O-100/4.8**

5.0 V8 SUPERCHARGED 0-100KPH 4.8 SECONDS



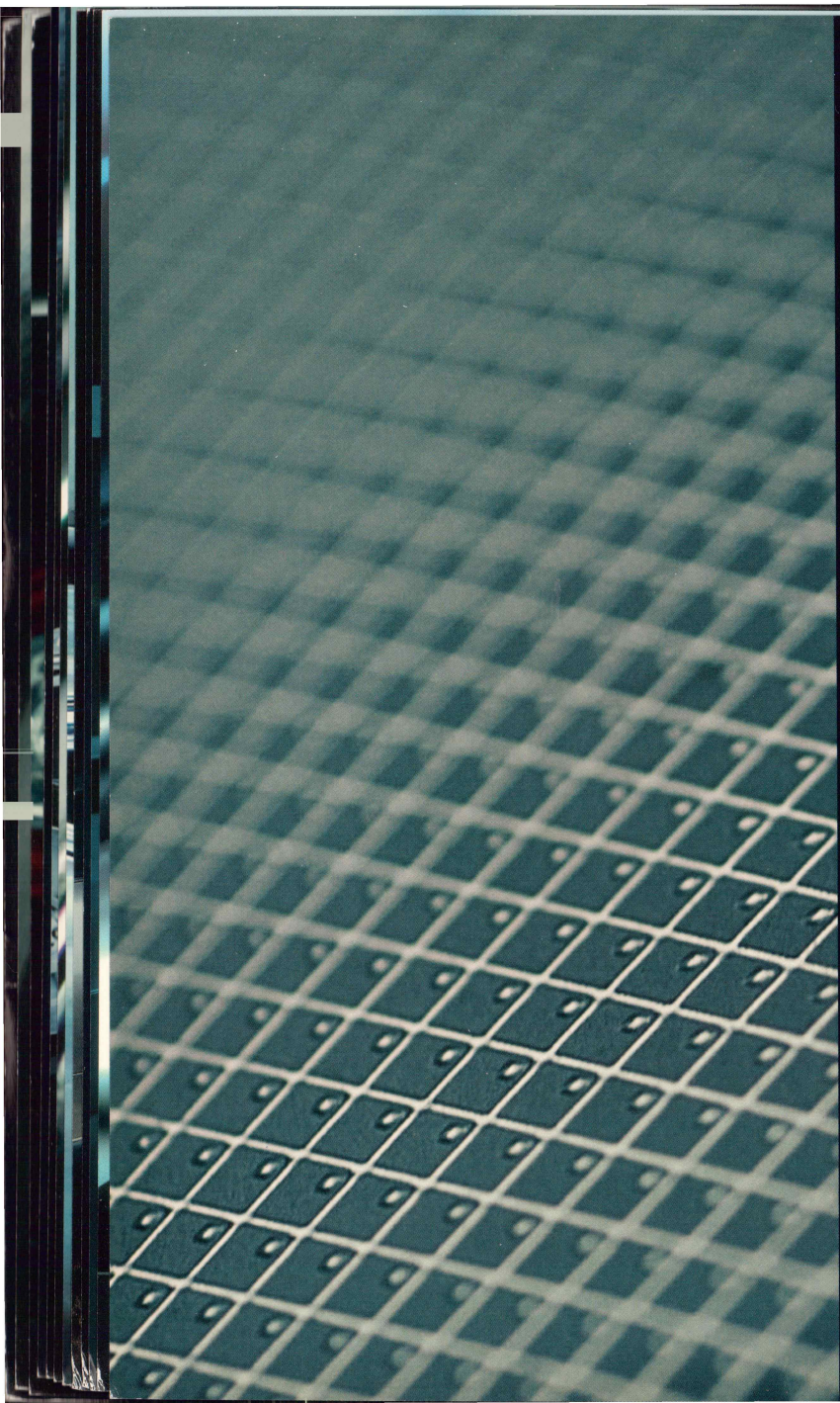
5.0 V8 SUPERCHARGED 510 PS 625Nm TORQUE 12.3l/100KM CO<sub>2</sub> 282g/km



P R N D S

DSC





CRAFTSMANSHIP

With an interior rich in craftsmanship, style and technical innovation, the new XK takes the sports car experience to a thrilling new level.

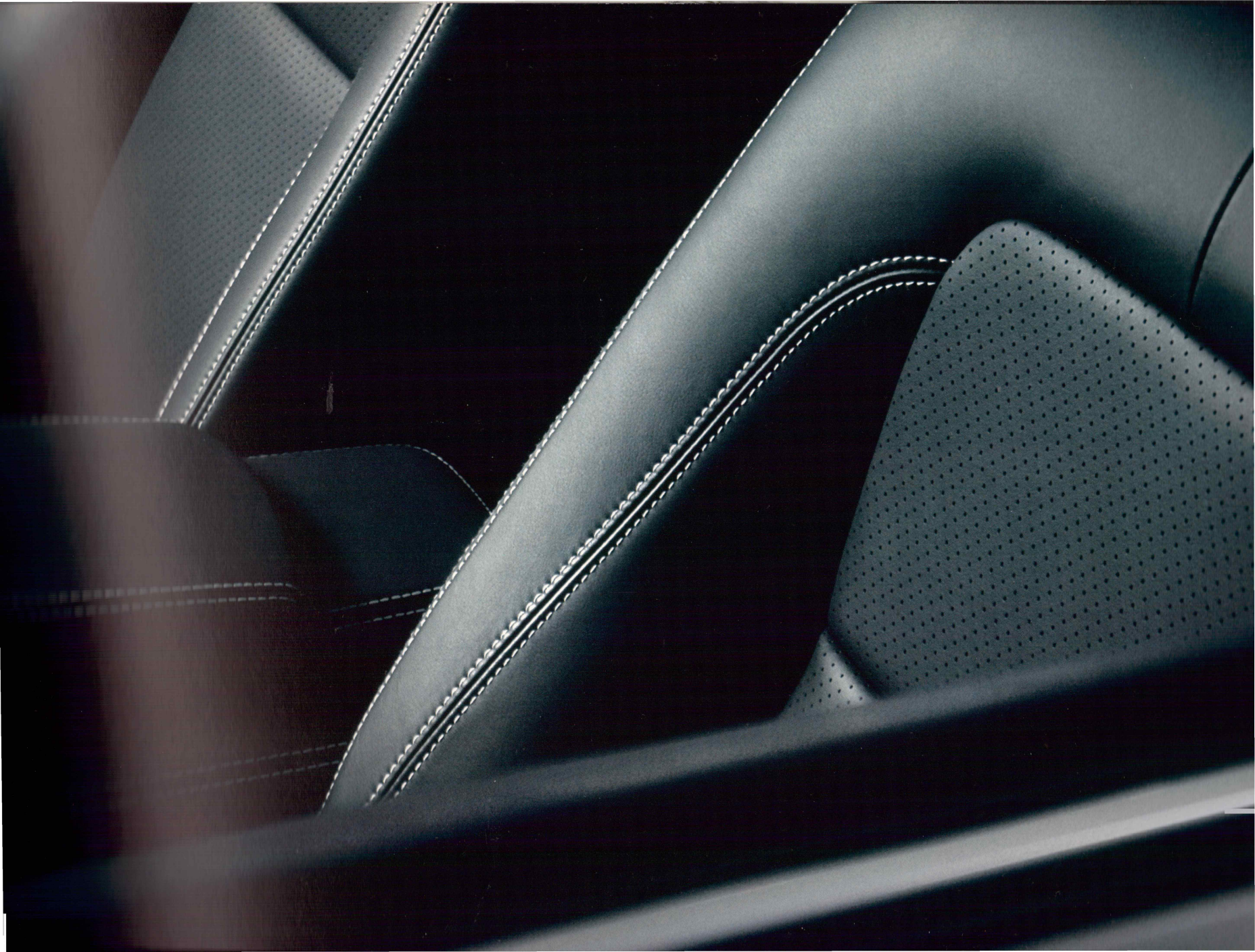
Craftsmanship takes a modern turn in the XK. You see it in the elegant centre console featuring the precision-made JaguarDrive Selector™ with its rotary shifter. Press the pulsing 'start' button on the new console, and this cylindrical cast alloy shift control rises up into the palm of your hand. To select a gear, simply twist.

It replaces the traditional gear lever with a sleek, space-efficient, ergonomic design that's compact, elegant and beautifully crafted. Another bold example of advanced Jaguar design. Craftsmanship in the new XK also comes in the form of gorgeous wood and technical finishes. Like the modern, straight-grained Rich Oak, or Aluminium Knurled pattern. Or the stunning Dark Oak veneer and Dark Mesh Aluminium for the XKR.

And craftsmanship with bespoke luxury reaches a new pinnacle with the XK Portfolio. It features the richest, twin-stitched Softgrain leather for the seats, upper facia and doors, along with warm Suedecloth headlining, premium carpet mats and a new Figured Ebony veneer. In convertible models, there's flawless craftsmanship in the sophisticated fabric roof. Triple-lined to deliver hushed, top-up cruising, it can be powered up or down in less than 18 seconds. And when lowered, it retracts completely into the bodywork beneath a rigid tonneau cover, so as not to compromise the XK's seductive lines.

We describe this combination of exquisite craftsmanship, luxurious finishes and technical excellence one way: Jaguar Sporting Luxury.







Intuitive design is about using advanced technologies to empower the driver, not to over-power. It's about creating a driving experience that excites and exhilarates.

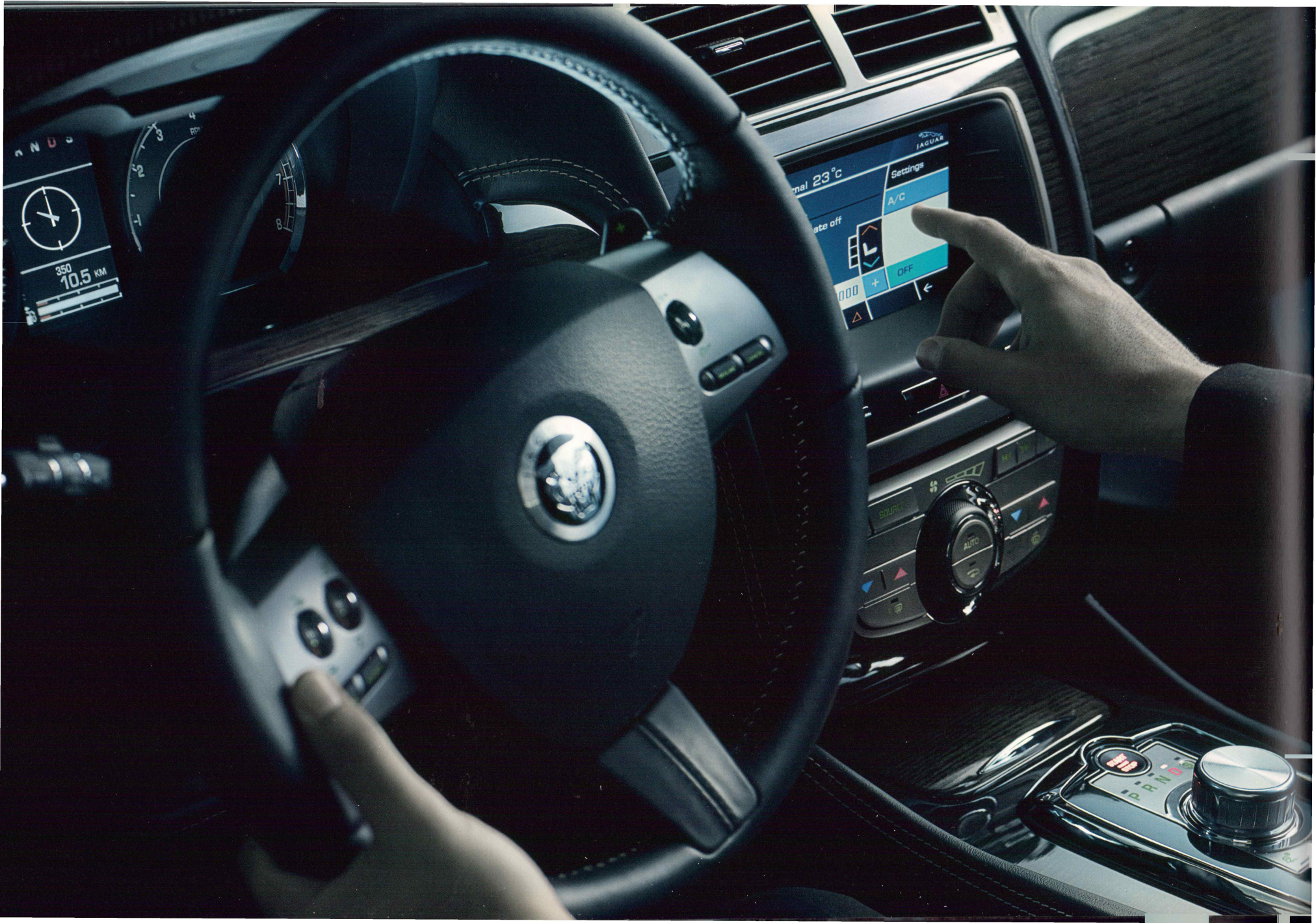
We believe the driver should be left to enjoy the drive and not worry about mastering complex technologies or illogical controls. It's why the new XK features a crystal-clear 7-inch Touch-screen that sets the benchmark for simple, intuitive operation. Its menu-based system lets you control many of the car's key interior functions – climate control, entertainment, satellite navigation, Bluetooth® telephone connectivity, even the settings on your iPod. To make a selection, simply touch the screen.

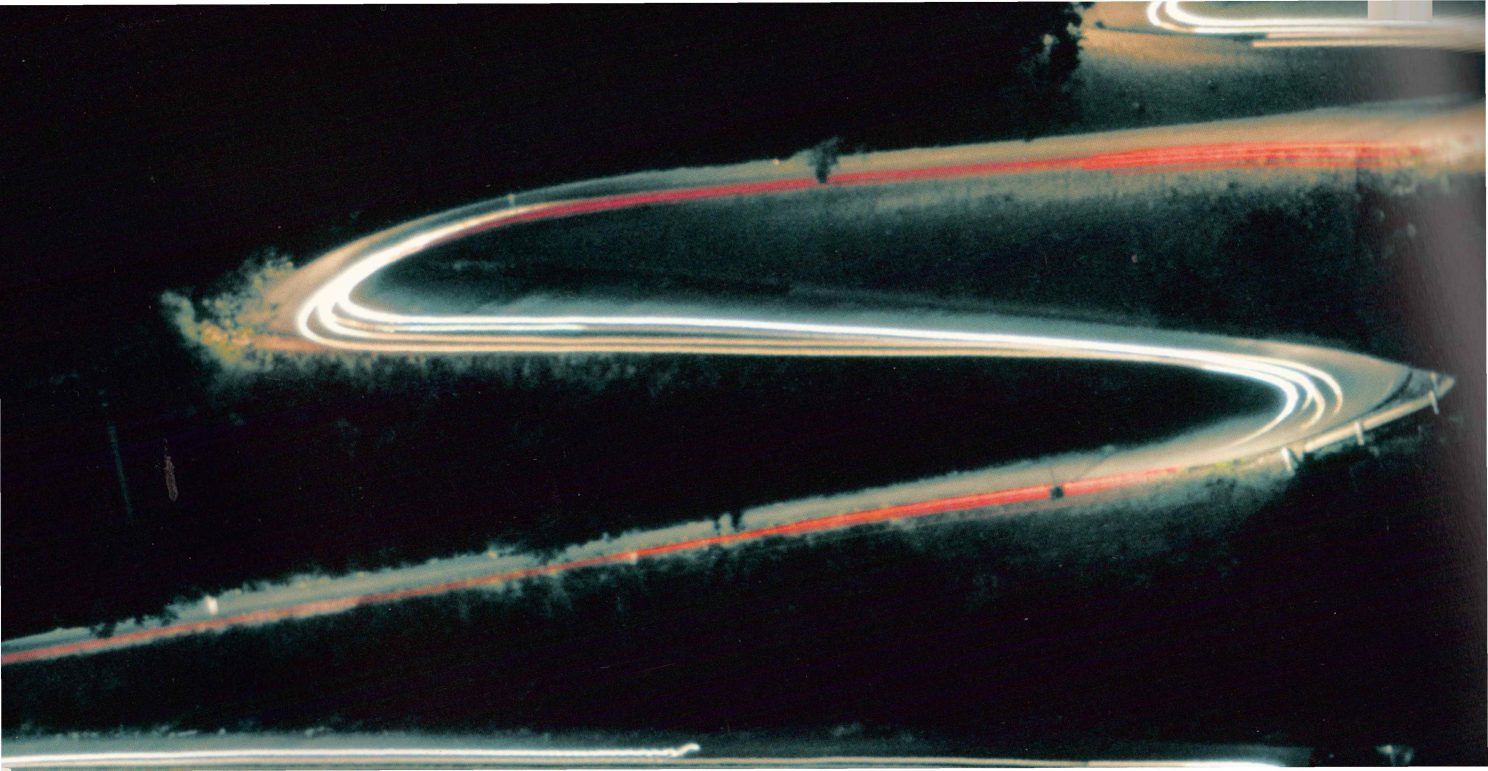
It's why the XK's new 6-speed automatic transmission is designed to provide continuous adaptation of its shift changes to suit your driving style; more responsive when you're pressing on, more relaxed when you're not. And a touch of a button is all that's needed to engage JaguarDrive Control™ and bring out the true sports car character of the XK.

In Dynamic Mode, the system will hold the lower gears longer, kick down more readily, firm-up the suspension, and send your pulse racing. JaguarDrive Control™ even offers a winter mode to give you more confidence tackling icy conditions. And to heighten the thrill of driving the new XK even further, the remarkable Adaptive Dynamics system monitors body movement 100 times a second, adjusting damping to deliver legendary Jaguar ride comfort coupled with pure sports car handling.

As you'd expect, the supercharged XKR takes cornering ability to an even higher level. Its new, fully-automatic, electronic Active Differential Control provides enhanced traction to sharpen the car's agility through the curves. Illuminating the XK's path through those curves is optional Active Front Lighting which points the car's Bi-Xenon headlamps in the direction you're turning.

This is Jaguar Technology making the new XK easy to enjoy, truly exhilarating to drive







**DSC**





Bowers & Wilkins

OUTPUT KEVLAR® MID RANGE SPEAKERS AND SPECIALLY DESIGNED ALUMINIUM DOME TWEETERS





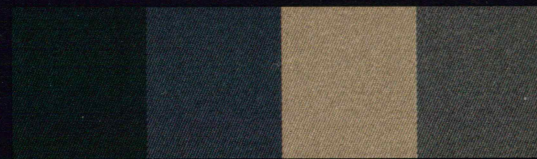


HOOD COLOURS



19" Artura

20" Kalimnos

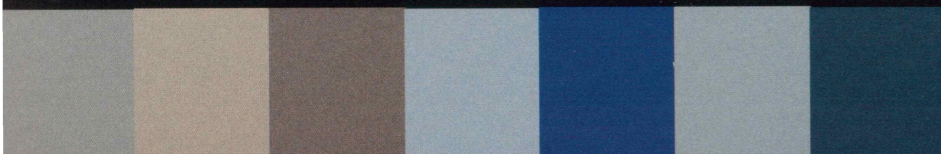


Black

Blue

Beige

Dark Grey



Lunar Grey\*

Vapour Grey\*

Pearl Grey\*

Azure Blue\*

Available until mid 2009

Spectrum Blue\*

Available from mid 2009

Frost Blue\*

Indigo\*

Ultimate Black\*



Radiance\*

Available until mid 2009

Claret\*

Available from mid 2009

Winter Gold\*

Please check availability with your local dealer



7-inch Touch-screen with Navigation system



FOR ENVIRONMENT

Option



Caramel seats with Caramel and Canvas

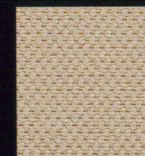
Ivory seats with Warm Charcoal and Canvas

Headlining  
Upper fascia

Seat Trim  
Bond Grain leather

HEADLINING

Standard



Canvas

ALL NEW 5.0 LITRE V8 ENGINE

7-INCH TOUCH-SCREEN WITH NAVIGATION SYSTEM

BOND GRAIN LEATHER

ALL NEW 6-SPEED AUTOMATIC TRANSMISSION WITH JAGUAR SEQUENTIAL SHIFT™ AND JAGUAR DRIVE SELECTOR™

ADAPTIVE DYNAMICS

JAGUAR SMART KEY SYSTEM™ WITH KEYLESS START

INTERIOR SHOWN CAMEL BOND GRAIN LEATHER SEATS

BURR WALNUT VENEER

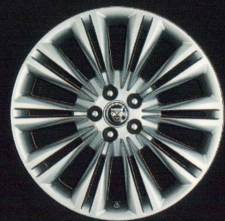
CAMEL BOND GRAIN LEATHER ON INSTRUMENT PANEL UPPER, FACIA, CONSOLE AND STEERING WHEEL

OPTIONAL ACTIVE VENTILATED FRONT SEATS - HEATED/COOLED

EXTERIOR CHOICE

ALLOY WHEELS

Standard



19" Caravela

Options



19" Artura

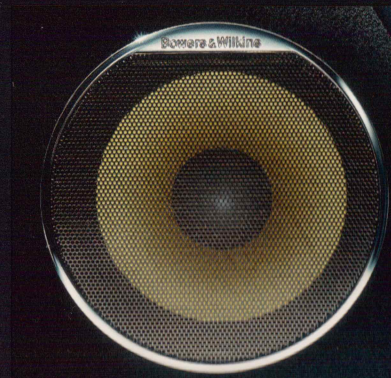


20" Kalimnos

HOOD COLOURS



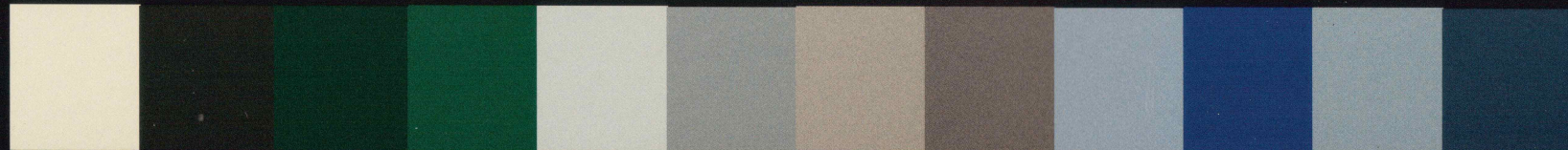
Black Blue Beige Dark Grey Burgundy Dark Green Dark Brown



Bowers & Wilkins 525W premium sound system

EXTERIOR COLOURS

Standard



Porcelain Ebony Botanical Green\* Emerald Fire\* Liquid Silver\* Lunar Grey\* Vapour Grey\* Pearl Grey\* Azure Blue\* Spectrum Blue\* Frost Blue\* Indigo\* Ultimate Black\*  
\*Metallic paint Available until mid 2009 Available from mid 2009

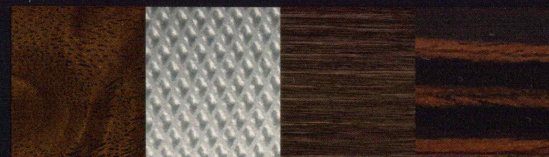


Radiance\* Clarét\* Winter Gold\*  
Available until mid 2009 Available from mid 2009 Please check availability with your local dealer

INTERIOR CHOICE

VENEERS

Standard



Burr Walnut Knurled Aluminium Rich Oak Figured Ebony

INTERIOR ENVIRONMENT

Standard



Warm Charcoal seats with Warm Charcoal and Warm Charcoal contrast stitch and Canvas  
 Warm Charcoal seats with Warm Charcoal and Ivory contrast stitch and Canvas  
 Caramel seats with Caramel and Warm Charcoal contrast stitch and Canvas  
 Ivory seats\* with Warm Charcoal and Ivory contrast stitch and Canvas  
 Ivory seats\* with Slate and Ivory contrast stitch and Canvas  
 Ivory seats\* with Oyster and Ivory contrast stitch and Canvas  
\*Ivory seats have Ivory stitching

Headlining  
 Upper facia  
 Seat Trim  
 Softgrain leather

HEADLINING

Standard



Canvas Jaguar Suedecloth Premium Headlining

ALL NEW 5.0 LITRE V8 ENGINE

19" ALLOY WHEELS

SOFTGRAIN LEATHER WITH TWIN NEEDLE CONTRAST STITCHING

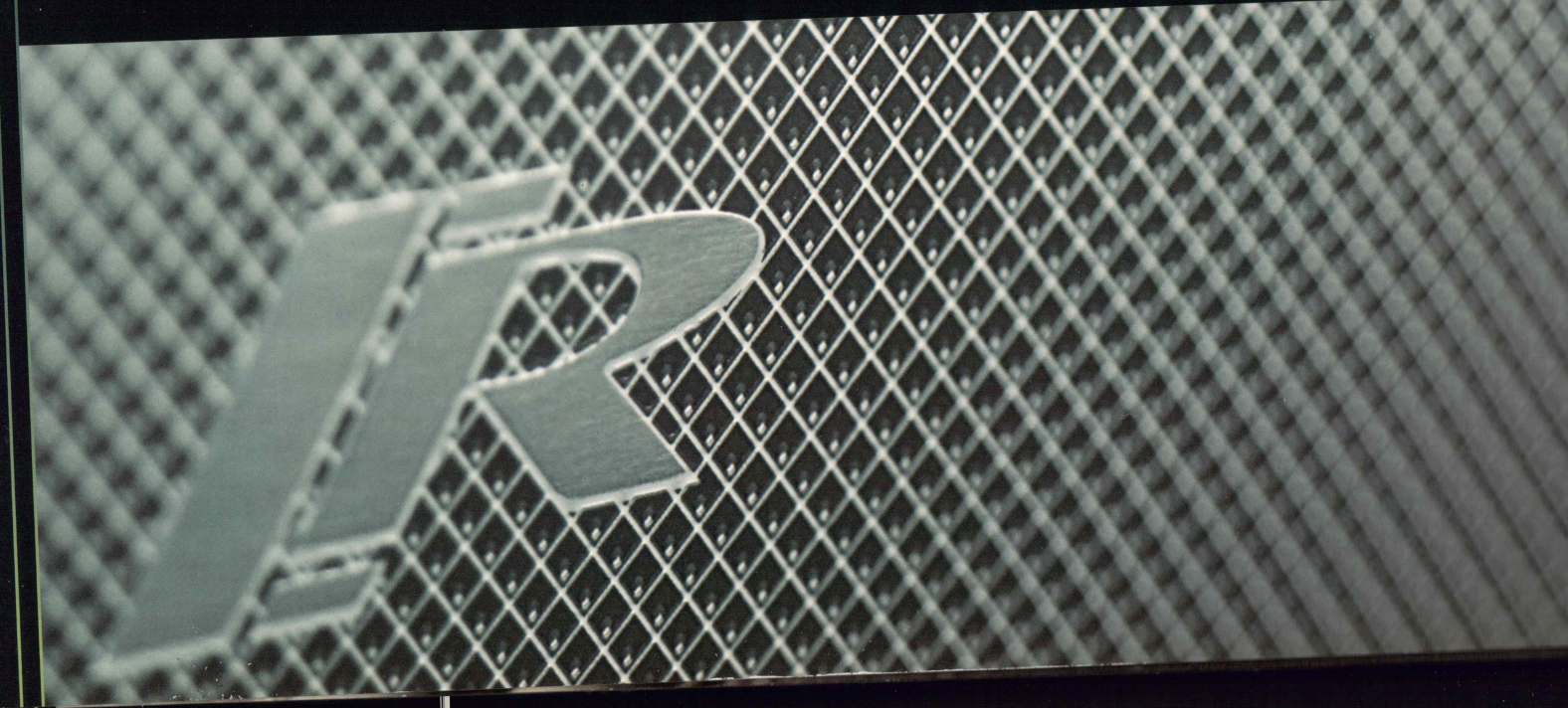
BOWERS & WILKINS 525W PREMIUM SOUND SYSTEM

JAGUAR SUEDECLOTH PREMIUM HEADLINING

LARGER CHOICE OF VENEERS AND INTERIOR COLOURWAYS



JAGUAR'S RACING HEART BEATS FASTEST IN THE  
SUPERCHARGED XKR - THE FINEST EXPRESSION  
OF JAGUAR XK POWER AND PERFORMANCE



## HOOD COLOURS



Black

Blue

Beige

Dark Grey

Burgundy

Dark



Grey\*

Azure Blue\*

Available until mid 2009

Spectrum Blue\*

Available from mid 2009

Frost Blue\*

Indigo\*

Ultimate Black\*

Radia

Availab

## ENVIRONMENT



Headlining  
Upper facia

Seat Trim  
Bond Grain  
leather

Seats with  
Charcoal  
Canvas

## HEADLINING

Standard



Canvas





CHROME SIDE POWER VENT

MIRROR COVER - CHROME FINISH

R PERFORMANCE AER

INCLUDES ENHANCED



XK ACCESSORIES

BRUSHED ALUMINIUM WIND DEFLECTOR



CHROME SIDE POWER VENT

BONNET

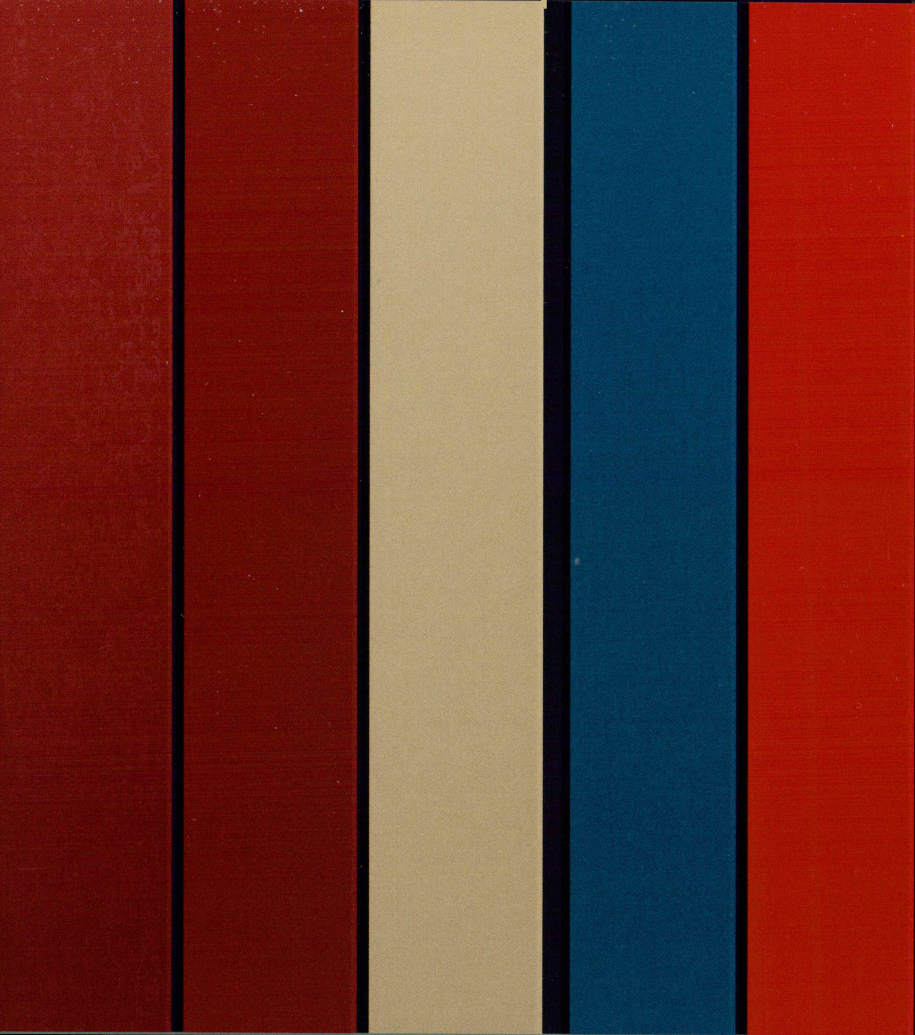
Rear seats can not be occupied when the deflector is in place





XK ACCESSORIES

ALUMINIUM BRAID - RED  
ALSO AVAILABLE IN GOLD AND GREY



## POWERTRAIN AND DRIVING DYNAMICS

6-speed electronic automatic transmission with Jaguar Sequential Shift™  
JaguarDrive Selector™  
JaguarDrive Control™ - Winter Mode & Dynamic Mode  
Adaptive Dynamics  
Cruise Control with Automatic Speed Limiter (ASL)  
Electronic Brake-force Distribution (EBD)  
Electric Parking Brake (EPB) - drive away release  
DSC Dynamic Stability Control (with Trac DSC mode)

## EXTERIOR FEATURES

LED tail lamps with twin reversing and fog lamps  
Heated exterior mirrors with electric adjustment, power-folding with auto-powerfold on locking vehicle, auto-dimming and memory function with integrated LED side repeaters and approach lamps  
Rain sensing windscreen wipers  
Bi-Xenon headlamps with cornering lamps, washers and automatic levelling  
Automatic headlamps on with windscreen wipers  
Front and rear parking aid (includes Touch-screen visual indicator)  
Body colour side power vents  
Chrome rear signature blade  
Chrome side window surrounds (Coupé only)  
Rear Spoiler and integrated aerial  
Electrically operated convertible top with aluminium tonneau cover

## SAFETY AND SECURITY

Remote control central locking with dead locks, 2-stage unlocking and drive-away locking  
Intrusion, perimetric and tilt sensing alarm with battery back-up sounder and engine immobiliser■  
Valet mode  
Anti-lock Braking System (ABS)  
Emergency Brake Assist (EBA)  
Roll-over Protection System (Convertible only)  
Airbags front and side (driver and front passenger)  
Adaptive Restraint Technology System (ARTS™)  
Front and rear seat belt pre-tensioners  
Front seat whiplash reduction system  
Belt minder system (front seats only)  
ISOFIX anchor points for rear child seat  
Pedestrian Contact Sensing™ - Automatically deployable bonnet system  
Warning triangle  
First aid kit■

## STANDARD FEATURES

## INTERIOR FEATURES

Automatic climate control  
Automatic air-recirculation with 5 settings  
Auto-dimming interior rear view mirror  
Auxiliary power socket  
Twin front cup holders  
Electric windows with one touch open/close and anti-trap  
Trip computer with message centre  
Jaguar Smart Key System™ with Keyless start  
Front seat-back map pockets  
Front ashtray and lighter  
Interior mood lighting  
Clock in Touch-screen  
Memory function with 3 settings for front seats, exterior mirrors and steering column

## MULTIMEDIA

6-disc in-dash CD changer  
Portable Audio Interface  
Windows Media® Audio (WMA) with MP3 compatibility  
Bluetooth® telephone connectivity\*  
Navigation system with DVD mapping  
7-inch full colour Touch-screen

### INTERIOR TRIM

Sport seats with Bond Grain leather facings (10/10 way)	●	-	-
R Sports seats with Bond Grain leather facings (10/10 way)	-	-	●
Bond Grain Active ventilated front seats – heated/cooled	○	○	○
Softgrain Sport seats with contrast stitch – heated/cooled (16/16 way)	-	-	-
XKR Softgrain Sport seats with contrast stitch and R logo – heated/cooled (16/16 way)	-	-	PI
Leather steering wheel	●	-	-
Heated leather steering wheel with contrast stitch▲(1)	-	-	PI
Burr Walnut/leather heated steering wheel▲(2)	○	○	○
Front and rear carpet mat set	●	-	PI
Front and rear premium carpet mat set	-	●	PI
Jaguar Suedecloth Premium Headlining (Coupé only)	-	●	PI

### INTERIOR THEMES

XK interior theme	●	-	-
XK Portfolio interior theme	-	●	-
R interior theme	-	-	●
R Performance interior theme	-	-	PI

### MULTIMEDIA

Jaguar sound system	●	-	-
Jaguar 525W premium sound system	○	-	●
Bowers & Wilkins 525W premium sound system	-	●	PI
Digital Audio Broadcasting (DAB) radio receiver■	○	○	○
R graphic on Touch-screen	-	-	●



#### XK interior theme

Sport seats with Bond Grain leather facings (10/10 way). Driver's and passenger's electric adjustment including fore/aft, recline, height, 2 way lumbar support and memory function. Variable heated with non-perforated seats.

#### XK Portfolio interior theme

XK Softgrain Luxury Sport seats with contrast stitch (16/16 way). Driver's and passenger's electric adjustment, variable manual headrest, variable heated and cooled, includes 4 way power lumbar, driver and passenger memory, front cushion length adjust, variable bolster and perforated (front and rear). Softgrain contrast stitch leather on steering wheel, doors, rear side panels, instrument panel and centre console with twin stitch detail. (No contrast stitching to Ivory seats). Nubuck edged premium carpet mat set with Jaguar script and logo, and Jaguar Suedecloth premium headlining. Six trim choices including Slate with Ivory contrast stitch (unique to XK Portfolio). Bowers & Wilkins 525W premium sound system.

#### R interior theme

Sport seats with Bond Grain leather facings (10/10 way). Driver's and passenger's electric adjustment including fore/aft, recline, height, 2 way lumbar support and memory function. Variable heated with non-perforated seats. R graphic in Touch-screen.

#### R Performance interior theme

XKR Softgrain Luxury Sport seats with contrast stitch and R branding (16/16 way). Driver's & passenger's electric adjustment, variable manual headrest, variable heated and cooled, includes 4 way power lumbar, driver and passenger memory, front cushion length adjust, variable bolster and perforated (front and rear). Softgrain contrast stitch leather on steering wheel, doors, rear side panels, instrument panel and centre console with twin stitch detail. (No contrast stitching to Ivory seats). Nubuck edged premium carpet mat set with Jaguar script and logo, and Jaguar Suedecloth premium headlining. Six trim choices including Charcoal with Cranberry stitch (unique for XKR). Bowers & Wilkins 525W premium sound system.

#### Traffic Message Channel (TMC)

A specific application of the FM Radio Data System (RDS) used for broadcasting real-time traffic and weather information. Data messages are received silently and decoded by a TMC-equipped car radio or navigation system, and delivered to the driver in a variety of ways. The most common of these is a TMC-enabled navigation system that can offer dynamic route guidance, alerting the driver of a problem on the planned route and calculating an alternative route to avoid the incident.

#### Jaguar Smart Key System™

With the Jaguar Smart Key in your pocket or bag, the car automatically unlocks as you pull the door handle. Simply push the ignition button to start the engine. Upon leaving, simply press a button on the door handle to lock the car or use the Jaguar Smart Key.

#### Jaguar Drive Control™

Interacts with the DSC (Dynamic Stability Control) engine and transmission management systems to change the characteristics of engine mapping, transmission shifts and brake interventions. It offers different modes selectable by a button and is designed to optimise the vehicle response depending on driving conditions and style.

#### Winter Mode

Softens the responsiveness of the engine and modifies the gear change strategy to improve traction in icy or slippery conditions. The vehicle performs in a more gentle and controlled manner, allowing more confident progress. When active, Winter mode selects 2nd gear for pulling away on level ground (no incline).

#### Dynamic Mode

Designed to optimise vehicle systems to deliver a more involving driving experience. When Dynamic mode is selected, Trac DSC is automatically engaged, and engine torque delivery characteristics and gear shift points are modified to further improve responsiveness. When selected while the transmission is in full manual mode, transmission up-shifts are fully controlled by the driver, with no automatic up-shift when the rev limit is reached.

#### Roll-Over Protection System

Two automatically deployable hoops which are designed to activate in a roll-over event (convertible only).

#### Navigation system<sup>(1)</sup> (2)

7-inch Touch-screen display with DVD mapping, postcode entry, destination entry on the move and TMC (Traffic Messaging Channel).

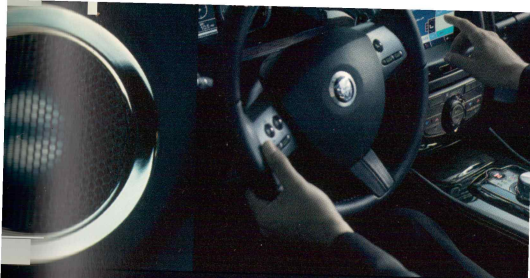
#### Jaguar sound system

With AM/FM radio featuring EON, RDS, PTY, TA and 6-disc in-dash CD player with automatic volume control, 100W power amplifier, WMA, MP3 compatibility, and 6 speakers.

#### Jaguar 525W premium sound system

As Jaguar sound system with 120 Watt per channel (525 Watt total power output) low-distortion Dolby® Pro Logic® II surround sound, 3 channel stereo, power amplifier and 8 speakers.

## GLOSSARY



### Bowers & Wilkins 525W sound system

Based on the Jaguar 525W premium sound system with 120 Watt per channel (525 Watt total power output) low-distortion Dolby® Pro Logic® II surround 3 channel stereo, dedicated Bowers & Wilkins speaker system, high output, low distortion Kevlar® mid-range speakers, specially designed aluminium dome tweeters and unique amplifier.

### Windows Media® Audio (WMA) and MP3 compatibility

Enables the CD player to play CDs which contain WMA and MP3 files.

### Bluetooth® telephone connectivity<sup>(3)</sup>

A Bluetooth® equipped Jaguar, enables hands-free use of your mobile phone when the phone is in the car. Bluetooth® is compatible with a selected range of mobile phones from a number of different manufacturers – ask your dealer or visit [www.jaguar.co.uk](#) for more details.

### Portable Audio Interface<sup>(4)</sup>

Allows the connection of an iPod, MP3 player or a USB Mass Storage Device to the in-car sound system and control via the 7-inch Touch-screen.

### 7-inch full colour Touch-screen

Display with controls for audio, climate control, Bluetooth® telephone controls and navigation. Includes clock.

Cylinders/Valves per Cylinder

Bore/Stroke mm

Capacity cc

Maximum power EEC-PS (kW)

@rev/min

Maximum torque EEC-Nm (lb.ft.)

@rev/min

Compression ratio:1

Transmission

## PERFORMANCE (manufacturers estimates)

0-100 kph seconds

Top speed kph

## FUEL CONSUMPTION<sup>(1)</sup>

Urban l/100km

Extra Urban l/100km

Combined l/100km

Carbon dioxide emissions g/km

Fuel capacity litres approx.

## WEIGHT<sup>(2)</sup>/DIMENSIONS

Weight kg

Gross vehicle weight kg

Ground clearance mm

Turning circle diameter m

Boot volume with roof up litres - VDA

Boot volume with roof down litres - VDA

<sup>(1)</sup> The fuel consumption figures were obtained in tests carried out

<sup>(2)</sup> Please consult your Dealer for details of charges associated with

NOTE: The dimension details refer to a nominal car but may vary



BY APPOINTMENT TO  
HER MAJESTY THE QUEEN  
MANUFACTURER OF  
BARRIERS AND JAGUAR CARS  
JAGUAR CARS LIMITED COVENTRY

BY APPOINTMENT TO HIS ROYAL  
HIGHNESS THE PRINCE OF WALES  
MANUFACTURER OF  
BARRIERS AND JAGUAR CARS  
JAGUAR CARS LIMITED COVENTRY

PREVIOUS APPOINTMENT TO THE LATE QUEEN ELIZABETH THE QUEEN MOTHER 1964 - 2007

### IMPORTANT NOTICE

Jaguar Cars Limited is constantly seeking ways to improve the specification, design and production of its vehicles and alterations take place continually. Whilst every effort is made to produce up-to-date literature, this brochure should not be regarded as an infallible guide to current specifications, nor does it constitute an offer for the sale of any particular vehicle. Distributors and dealers are not agents of Jaguar Cars Limited and have absolutely no authority to bind Jaguar Cars Limited by any express or implied undertaking or representation. Illustrations in this brochure may include optional extras.

Comparisons are based on manufacturer's own data and testing.

### ENVIRONMENTAL NOTICE

Jaguar Cars Limited has a vision of being amongst the world's leading companies in demonstrating progress towards sustainability. We aim to do this by contributing to a better quality of life, with corporate citizenship at the very heart of our company, and by reducing our environmental footprint through innovative design and manufacturing, minimizing resource and energy use. Environmental responsibility is a core value in Jaguar, and it is our policy to continually improve our environmental standards in all areas of business activity.

This brochure is produced using paper stock, which contains 50% recycled post consumer waste and controlled wood material from well managed forests. Pulps used are Elemental Chlorine Free.

### ENVIRONMENTAL CHOICE

The innovative use of aluminium construction is one tangible example of the commitment by Jaguar Cars Limited continually to pursue technologies that support efficiency and sustainability. In addition to its engineering and dynamic benefits, lightweight aluminium construction contributes to fuel efficiency and therefore helps create fewer emissions – supporting Jaguar Cars Limited's policy of responsible design and manufacture.

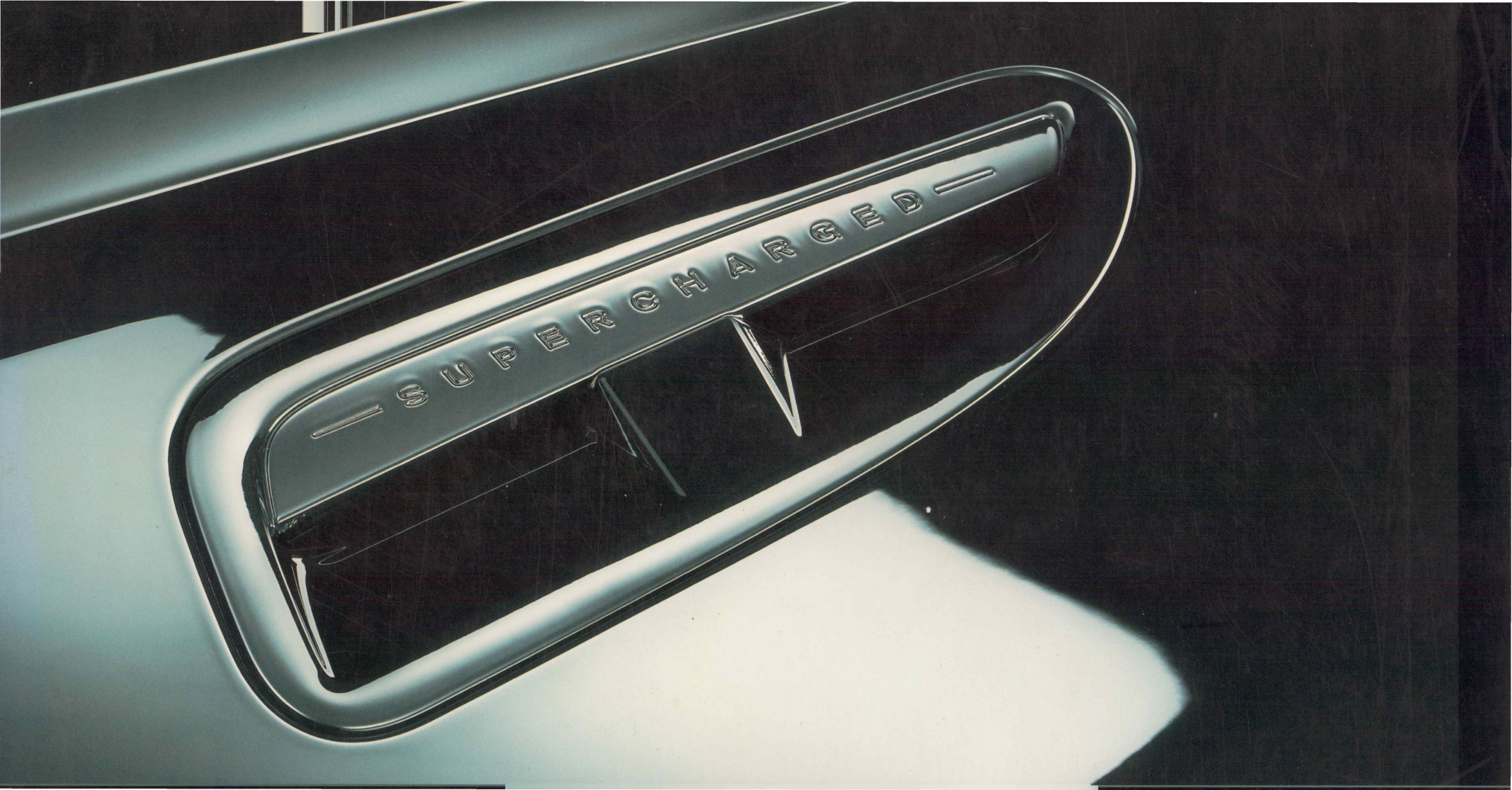
### ILLUSTRATIONS

- Page 4 XKR Coupé in Ultimate Black
- Page 10 XKR Convertible in Ultimate Black and XKR Coupé in Ultimate Black with optional 20" Nevis alloy wheels
- Page 16 XK Portfolio Convertible in Liquid Silver with 19" Caravela alloy wheels
- Page 20 XKR Coupé in Ultimate Black with optional 20" Nevis alloy wheels
- Page 23 XKR Coupé in Liquid Silver with optional 20" Nevis alloy wheels
- Page 35 XK Portfolio Convertible in Liquid Silver with optional 20" Kalimnos alloy wheels
- Page 41 XKR Coupé in Ultimate Black and XKR Convertible in Ultimate Black with optional 20" Kalimnos alloy wheels
- Page 42 XK Coupé in Liquid Silver with 18" Venus alloy wheels and XK Convertible in Liquid Silver with optional 19" Artura alloy wheels
- Page 44 XK interior with Caramel Bond Grain leather seats and upper facia and Burr Walnut veneer
- Page 46 XK Portfolio Coupé in Liquid Silver with 19" Caravela alloy wheels and XK Portfolio Convertible in Liquid Silver with optional 20" Kalimnos alloy wheels
- Page 48 XK Portfolio interior with Ivory Softgrain leather seats and Oyster upper facia with Ivory contrast stitching and Figured Ebony veneer
- Page 50 XKR Coupé in Ultimate Black with optional 20" Nevis alloy wheels and XKR Convertible in Ultimate Black with 19" Tamana alloy wheels
- Page 52 XKR interior with Warm Charcoal Bond Grain leather seats and upper facia and Dark Oak veneer
- Page 54 XKR Coupé in Ultimate Black and XKR Convertible in Ultimate Black with optional 20" Nevis alloy wheels
- Page 56 XKR R Performance interior with Warm Charcoal Softgrain leather seats and upper facia with Cranberry contrast stitching and Dark Mesh Aluminium veneer
- Page 58 XKR Coupé in Ultimate Black with optional 20" Nevis alloy wheels and R Performance Aerodynamic Pack
- Page 62 XKR R Performance interior with Warm Charcoal Softgrain leather seats and upper facia with Cranberry contrast stitching and Aluminium Braid – Red veneer

Jaguar Cars Limited,  
Registered Office: Abbey Road, Whitley,  
Coventry, CV3 4LF, United Kingdom  
Registered in England Number: 1672070  
jaguar.com







SUPERCHARGED