

MINX DE LUXE SALOON

Engine: Four-cylinder O.H.V.; bore 76.2 mm. (3 in.); stroke 76.2 mm. (3 in.); 1,390 c.c. (85 cu. in.); maximum b.h.p. 51 at 4,400 r.p.m.; 8.0 : 1 compression ratio (For certain overseas territories the ratio is 7.0 : 1); three-bearing crankshaft, pressure lubrication with external full-flow filter; Zenith downdraught carburettor with air cleaner and silencer, thermostatically controlled manifold system.

Gearbox: Four-speed, with synchromesh on top, third and second gears. Overall ratios: 4.778 : 1, 7.126 : 1, 11.807 : 1, 17.045 : 1. Reverse: 22.726 : 1.

Rear axle: Semi-floating with spiral bevel final drive. Ratio: 4.788 : 1.
Brakes: Lockheed two leading shoe system, hydraulic operation with 8 in. diameter waterproof brake drums. Handbrake operates mechanically on rear wheels.

Suspension, Front: Independent with coil springs. **Rear:** Semi-elliptic springs. Hydraulic telescopic-type shock absorbers all round.

Steering: Two spoke wheel operating worm and nut steering. Right- or left-hand drive available according to market requirements.

Wheels and Tyres: Five "easi clean" disc wheels. Tyres: Tubeless cushion, 5.60 x 15 in.

Cooling System: Centrifugal pump and 4-bladed fan; thermostatic control for more rapid warm up; pressurised radiator; selective cooling by jets on exhaust ports and sparking plug bosses.

Clutch: 7½ in. diameter single dry plate, hydraulically operated from pendant pedal.

Petrol Tank: 7½ gallon capacity positioned below the luggage compartment floor.

Electrical Equipment: 12 volt, 38 amp. hour battery under bonnet; solenoid operated starter; dynamo and coil; two double-dipping headlamps; separate side lamp; built-in twin stop tail lamps incorporating reflectors; self-cancelling flashing indicators; twin-bladed windscreen wipers.

Overall Dimensions (approx.): Length: 162 in. (4.115 m.).

MINX CONVERTIBLE

Width: 60½ in. (1.543 m.). Height: Saloon, 59½ in. (1.511 m.). Convertible, 58 in. (1.473 m.). Wheelbase: 96 in. (2.438 m.).

Weight (approx.): Saloon unladen (with petrol and water), 2,200 lb. (998 kg.). Convertible 2220 lb. (1007 kg.).

Accessories (available at extra cost): His Master's Voice or Ekco Radio; Heating and Ventilating equipment; Clock; Oil gauge; Ammeter; Overriders; White-wall tyres and Rootes 'Rimfinishers'. For details of the full range of Rootes Special Accessories apply to your Dealer.

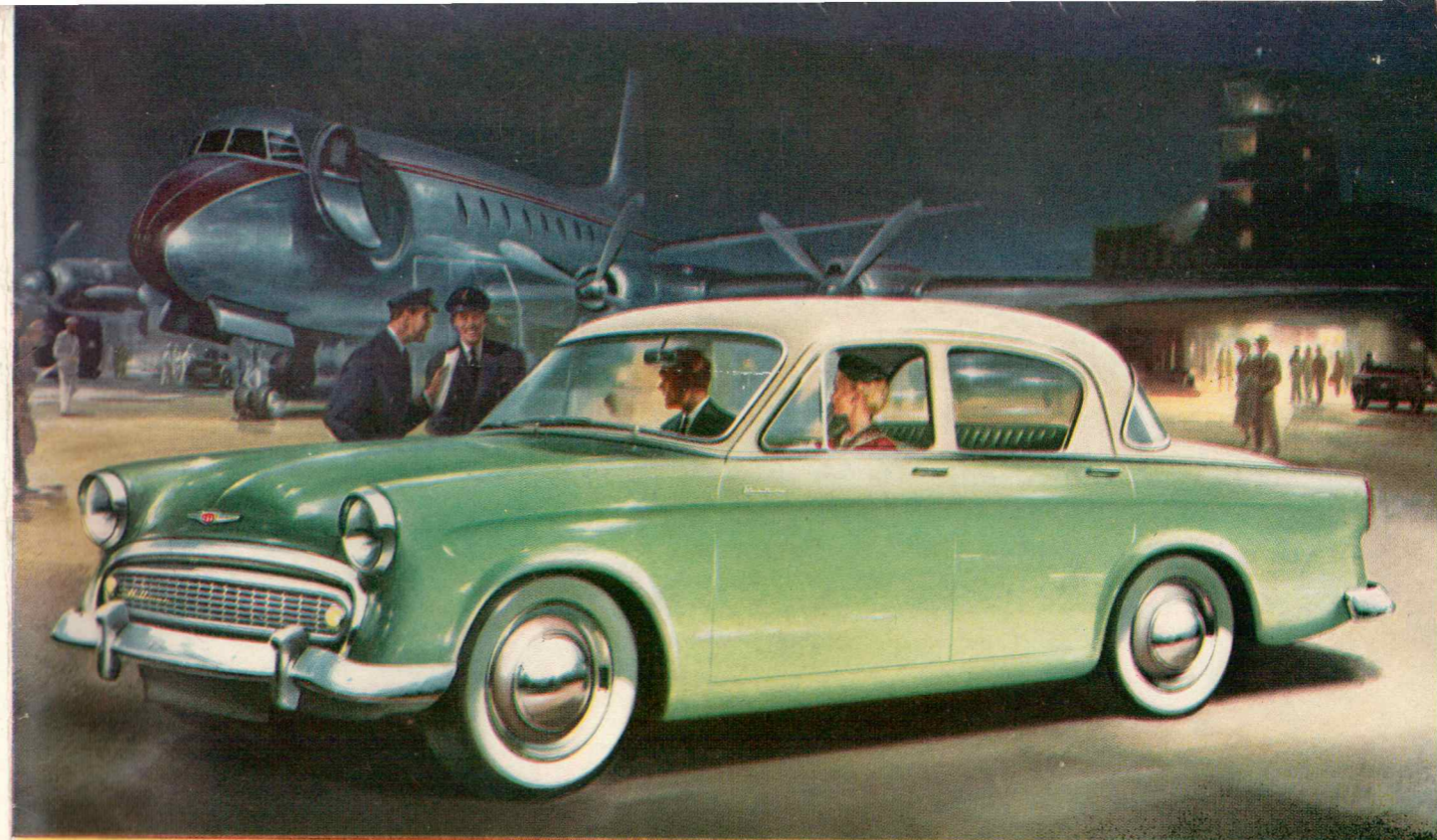
Manumatic Transmission (available at extra cost): The Selective Automatic Manumatic Transmission System is available for drivers who prefer the simplicity and relaxation of two-pedal control. As this unit is fitted during production, it must be specified at the time of placing your order.

COLOUR SCHEMES: Where two-tone colour schemes are quoted, the first is the upper body colour and the second the lower body colour.

MINX DE LUXE SALOON: Two-tone colours. Pearl Grey/Antelope with Bright Red upholstery. Pearl Grey/Fiesta Blue with Fiesta Blue upholstery. Pearl Grey/Seacrest Green with Seacrest Green upholstery. Oyster Grey/Charcoal with Light Grey upholstery. Pearl Grey/Calypso Red with Light Grey upholstery.

Single-tone colours: Embassy Black with Bright Red upholstery. Embassy Black with Light Fawn upholstery. Fiesta Blue with Fiesta Blue upholstery. Antelope with Bright Red upholstery. Thistle Grey with Bright Red upholstery.

MINX CONVERTIBLE: Thistle Grey with Bright Red upholstery with Red or Black hood. Fiesta Blue with Fiesta Blue upholstery with Blue or Black hood. Seacrest Green with Seacrest Green upholstery with Green or Black hood. Pippin Red with Light Grey upholstery with Black hood. Black with Bright Red upholstery with Red hood.



Søren Kristensen & Krogh
Godthaabsvej 177
Gothaab 8566 - 9918

EXPORT **ROOTES** DIVISION

DEVONSHIRE HOUSE, PICCADILLY, LONDON, W.1

The Company reserves the right to alter any prices or specifications at any time without notice, and all goods are sold subject to prices and Conditions of Sale ruling at the time of delivery

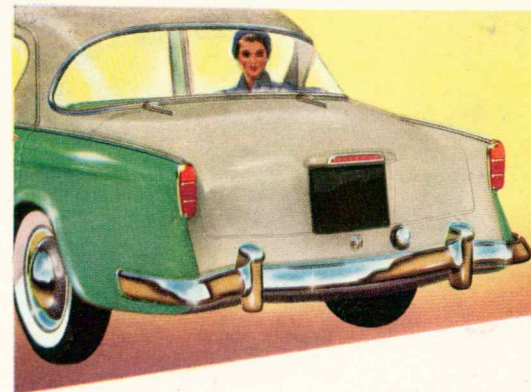


Sales and Service
in 152 Countries

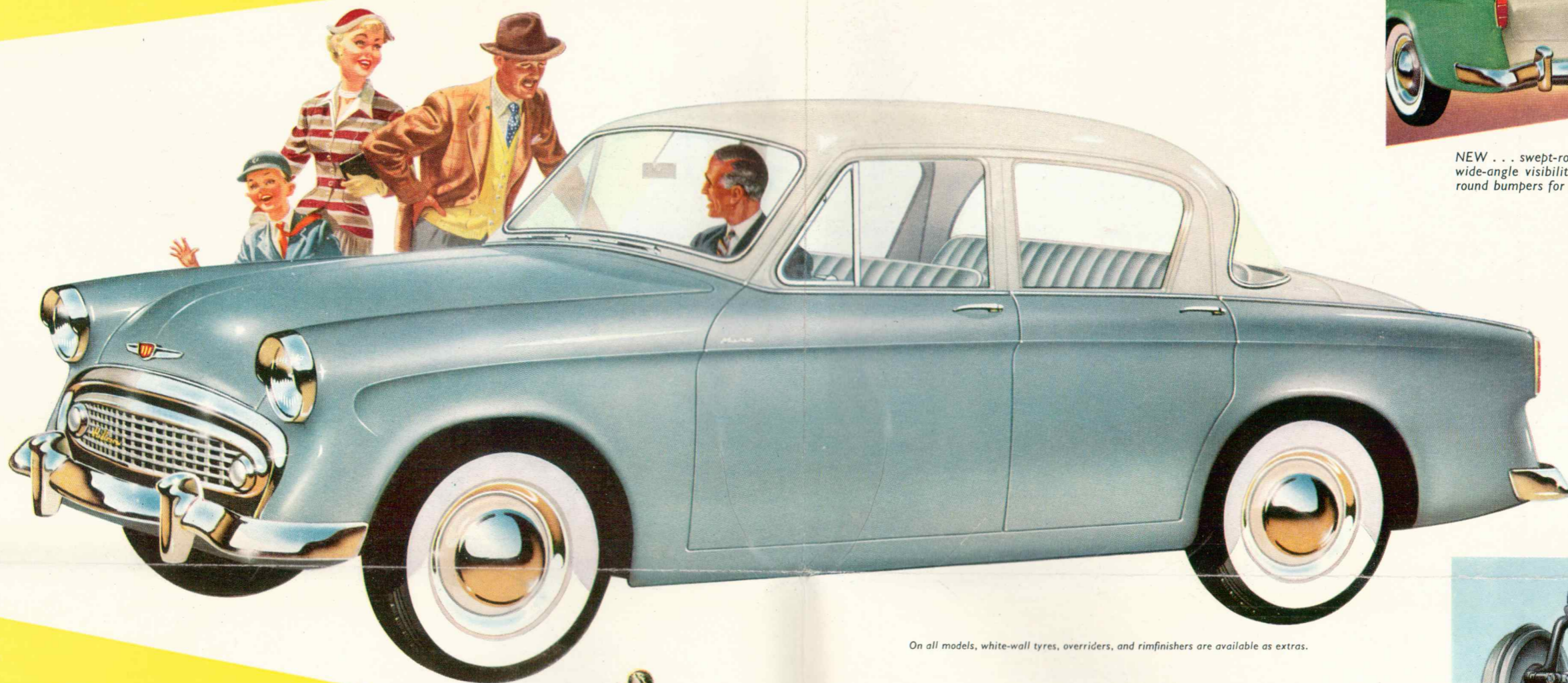
Printed in England, H.B.
1/87/45

HILLMAN
proved the finest of them all

The **HILLMAN MINX** Longer, lower lines & smarter in every way



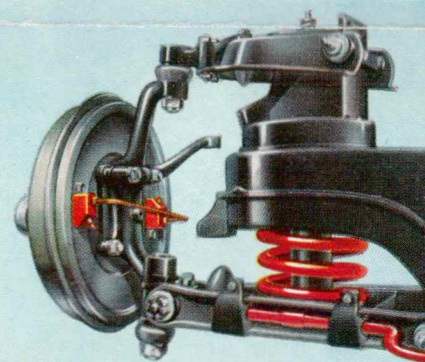
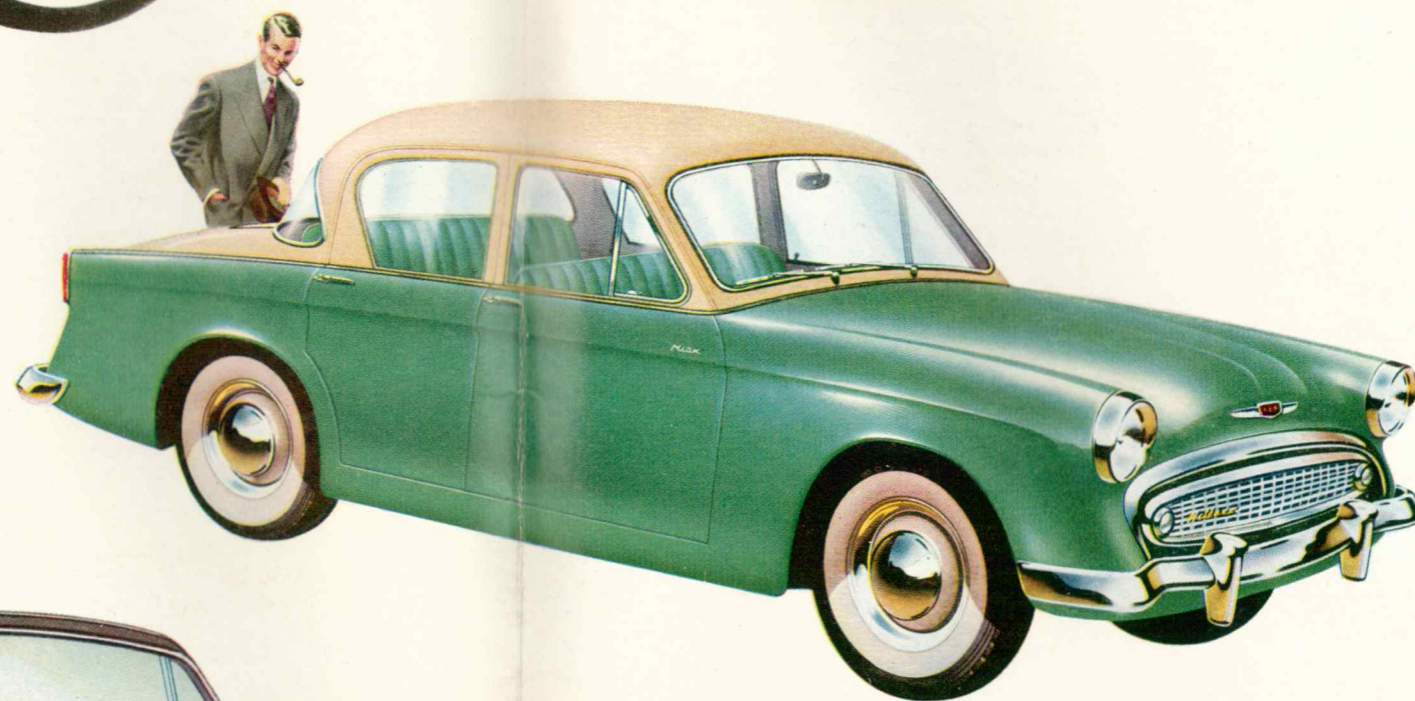
NEW . . . swept-round rear window for wide-angle visibility . . . robust wrap-round bumpers for style and protection.



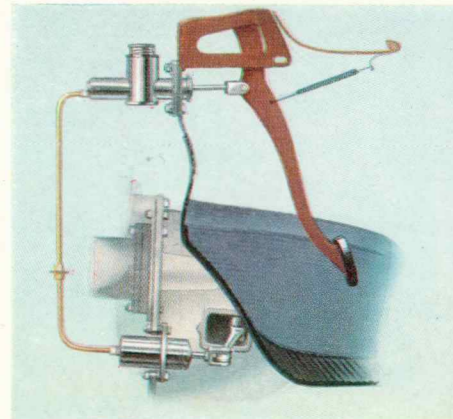
On all models, white-wall tyres, overriders, and rimfinishers are available as extras.

Minx de luxe saloon

Long, low lines, smooth contours and moulded waist-line for style, and new two-tone colour schemes for harmony! New chromium surrounds to the screen and rear window add distinction to the overall appearance. There's comfort in the deep-spring seating, luxury in the new stabilised ride and a new, wider view all round—with curved rear window for extra visibility!



NEW luxury ride with coil spring front suspension and new telescopic shock absorbers, front and rear.

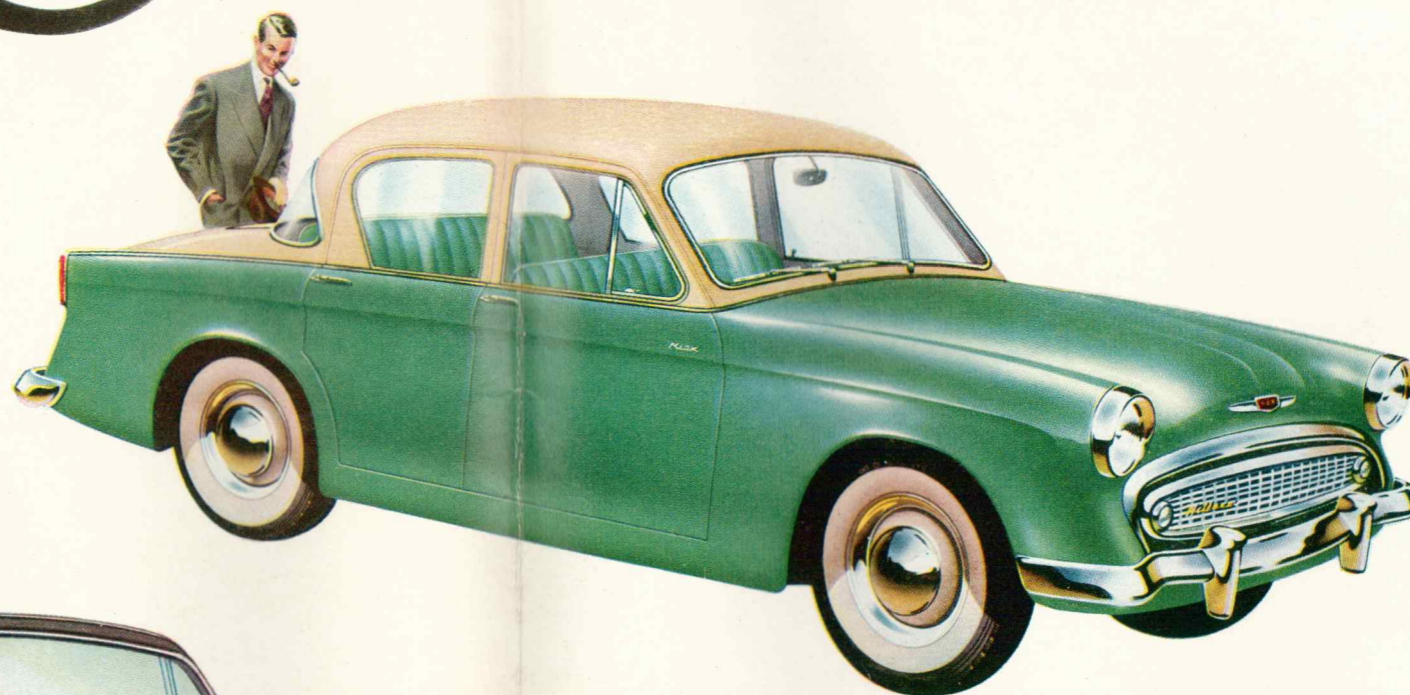


NEW smooth-action hydraulic clutch control minimises engine vibration and gives smoother engagement.

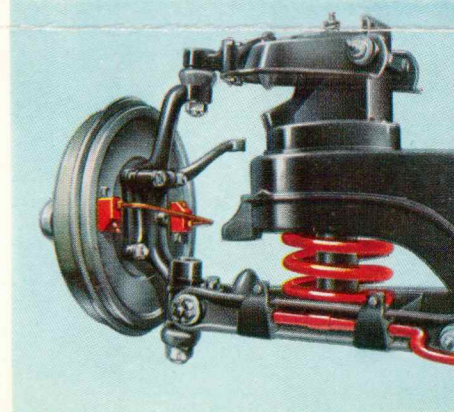


Minx de luxe saloon

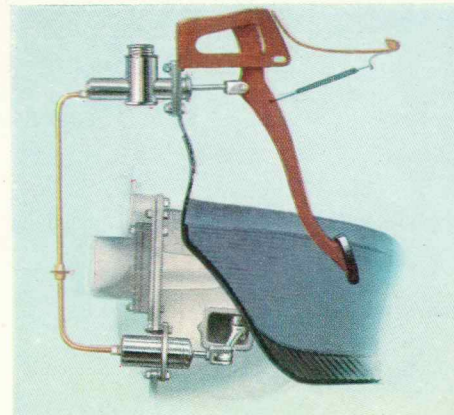
Long, low lines, smooth contours and moulded waist-line for style, and new two-tone colour schemes for harmony! New chromium surrounds to the screen and rear window add distinction to the overall appearance. There's comfort in the deep-spring seating, luxury in the new stabilised ride and a new, wider view all round—with curved rear window for extra visibility!



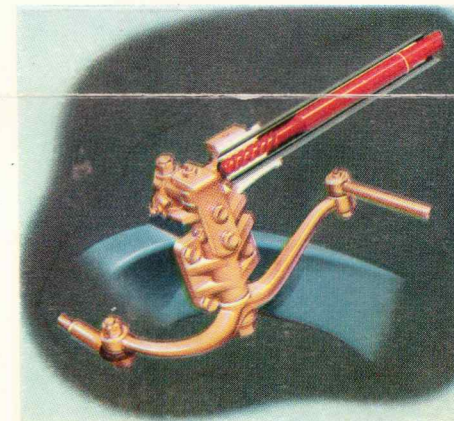
On all models, white-wall tyres, overriders, and rimfinishers are available as extras.



NEW luxury ride with coil spring front suspension and new telescopic shock absorbers, front and rear.

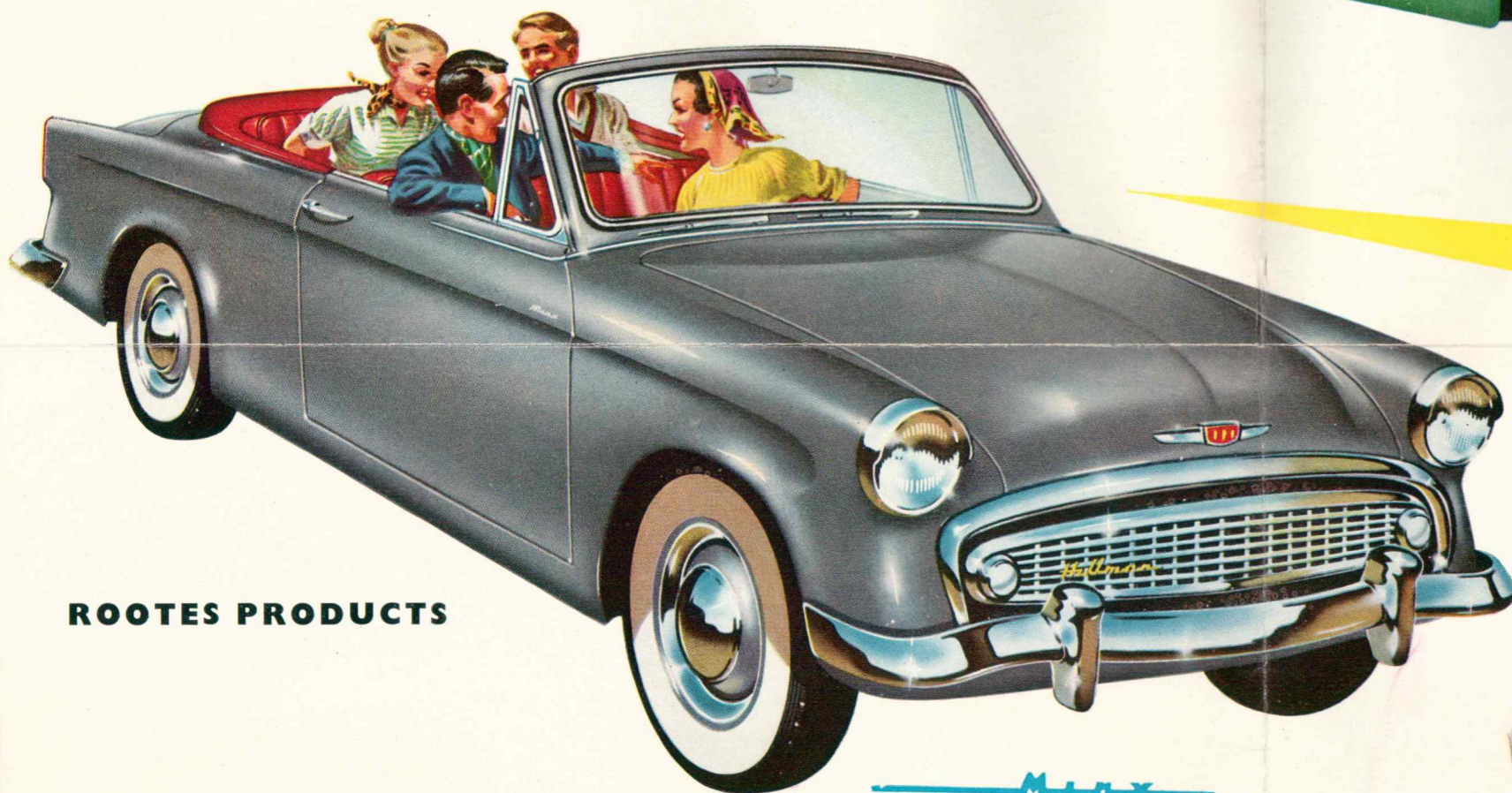


NEW smooth-action hydraulic clutch control minimises engine vibration and gives smoother engagement.



Lighter, smoother steering with greatly increased unit longevity result from detail refinements now introduced into the latest Hillman steering gear.

ROOTES PRODUCTS

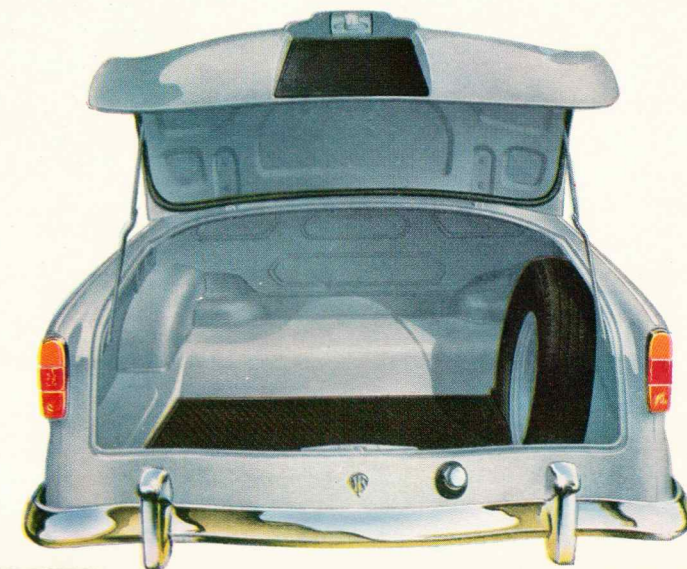
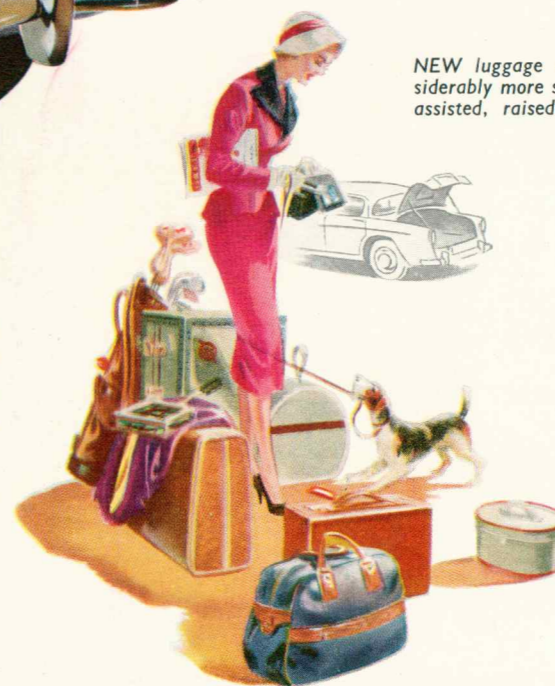


Minx convertible

All the new Hillman features *plus* convertibility! With the head stowed away, the Convertible is an open sports car; with the head half-down, the smartest coupé-de-ville. Close the head entirely and you travel in saloon car comfort.



NEW luggage compartment has considerably more space . . . lid is spring-assisted, raised with finger pressure.



BRIEF SPECIFICATION

MINX DE LUXE SALOON

Engine: Four-cylinder O.H.V.; bore 76.2 mm. (3 in.); stroke 76.2 mm. (3 in.); 1,390 c.c. (85 cu. in.); maximum b.h.p. 51 at 4,400 r.p.m.; 8.0 : 1 compression ratio (For certain overseas territories the ratio is 7.0 : 1); three-bearing crankshaft, pressure lubrication with external full-flow filter; Zenith downdraught carburettor with air cleaner and silencer, thermostatically controlled manifold system.

Gearbox: Four-speed, with synchromesh on top, third and second gears. Overall ratios: 4.778 : 1, 7.126 : 1, 11.807 : 1, 17.045 : 1. Reverse: 22.726 : 1.

Rear axle: Semi-floating with spiral bevel final drive. Ratio: 4.788 : 1. **Brakes:** Lockheed two leading shoe system, hydraulic operation with 8 in. diameter waterproof brake drums. Handbrake operates mechanically on rear wheels.

Suspension, Front: Independent with coil springs. **Rear:** Semi-elliptic springs. Hydraulic telescopic-type shock absorbers all round. **Steering:** Two spoke wheel operating worm and nut steering. Right- or left-hand drive available according to market requirements.

Wheels and Tyres: Five "easi clean" disc wheels. Tyres: Tubeless cushion, 5.60 x 15 in.

Cooling System: Centrifugal pump and 4-bladed fan; thermostatic control for more rapid warm up; pressurised radiator; selective cooling by jets on exhaust ports and sparking plug bosses.

Clutch: 7½ in. diameter single dry plate, hydraulically operated from pendant pedal.

Petrol Tank: 7½ gallon capacity positioned below the luggage compartment floor.

Electrical Equipment: 12 volt, 38 amp. hour battery under bonnet; solenoid operated starter; dynamo and coil; two double-dipping headlamps; separate side lamp; built-in twin stop tail lamps incorporating reflectors; self-cancelling flashing indicators; twin-bladed windscreen wipers.

Overall Dimensions (approx.): Length: 162 in. (4.115 m.).

MINX CONVERTIBLE

Width: 60½ in. (1.543 m.). Height: Saloon, 59½ in. (1.511 m.). Convertible, 58 in. (1.473 m.). Wheelbase: 96 in. (2.438 m.).

Weight (approx.): Saloon unladen (with petrol and water), 2,200 lb. (998 kg.). Convertible 2220 lb. (1007 kg.).

Accessories (available at extra cost): His Master's Voice or Ekco Radio; Heating and Ventilating equipment; Clock; Oil gauge; Ammeter; Overriders; White-wall tyres and Rootes 'Rimfinishers'. For details of the full range of Rootes Special Accessories apply to your Dealer.

Manumatic Transmission (available at extra cost): The Selective Automatic Manumatic Transmission System is available for drivers who prefer the simplicity and relaxation of two-pedal control. As this unit is fitted during production, it must be specified at the time of placing your order.

COLOUR SCHEMES: Where two-tone colour schemes are quoted, the first is the upper body colour and the second the lower body colour.

MINX DE LUXE SALOON: Two-tone colours. Pearl Grey/Antelope with Bright Red upholstery. Pearl Grey/Fiesta Blue with Fiesta Blue upholstery. Pearl Grey/Seacrest Green with Seacrest Green upholstery. Oyster Grey/Charcoal with Light Grey upholstery. Pearl Grey/Calypto Red with Light Grey upholstery.

Single-tone colours: Embassy Black with Bright Red upholstery. Embassy Black with Light Fawn upholstery. Fiesta Blue with Fiesta Blue upholstery. Antelope with Bright Red upholstery. Thistle Grey with Bright Red upholstery.

MINX CONVERTIBLE: Thistle Grey with Bright Red upholstery with Red or Black hood. Fiesta Blue with Fiesta Blue upholstery with Blue or Black hood. Seacrest Green with Seacrest Green upholstery with Green or Black hood. Pippin Red with Light Grey upholstery with Black hood. Black with Bright Red upholstery with Red hood.

Søren Kristensen & Krogh
Godthaabsvej 177
Gothaab 8566 - 9918

EXPORT **ROOTES** DIVISION

DEVONSHIRE HOUSE, PICCADILLY, LONDON, W.1

The Company reserves the right to alter any prices or specifications at any time without notice, and all goods are sold subject to prices and Conditions of Sale ruling at the time of delivery



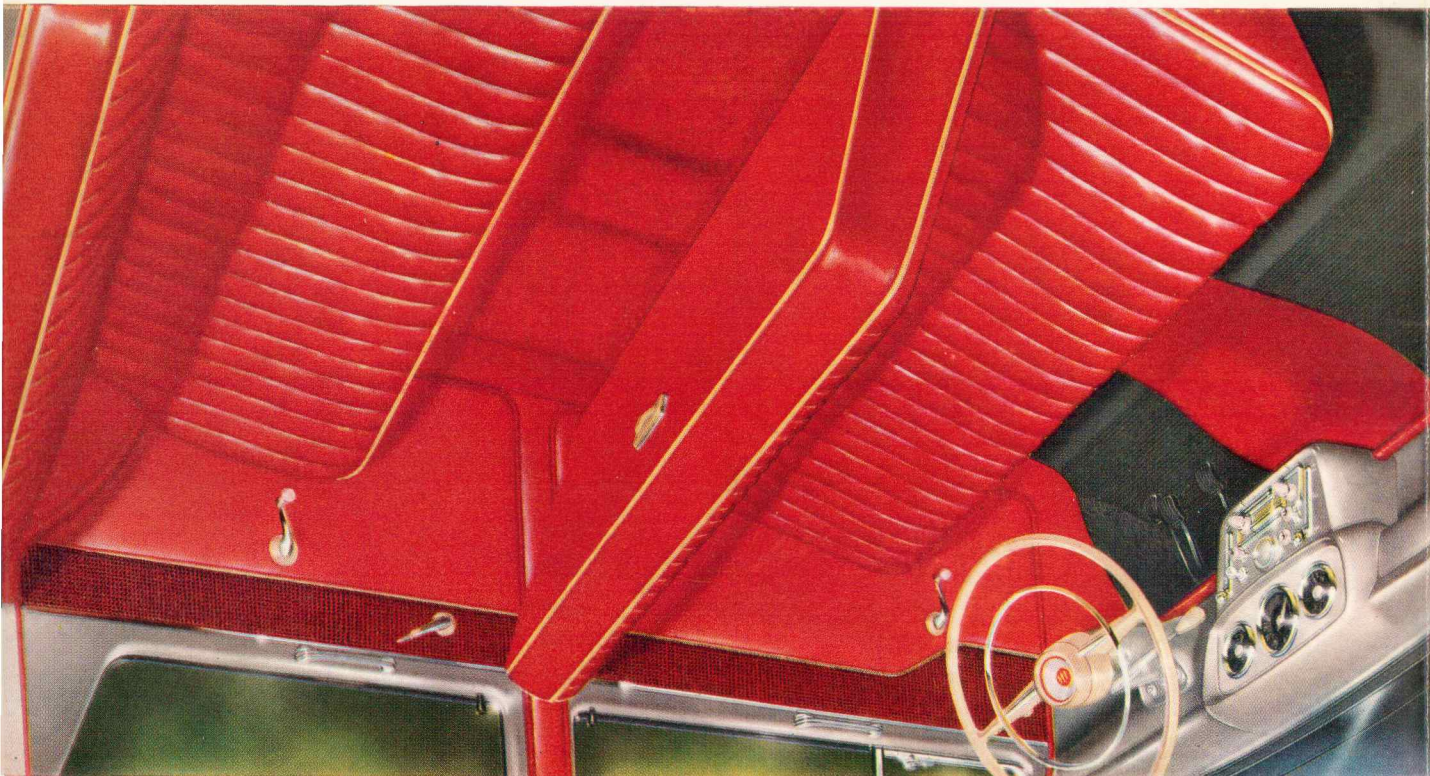
Sales and Service
in 152 Countries

Printed in England, H.B.
1/87/45

Ref. 2302/EX/RHD

Right- or Left-hand drive available according to market requirements.

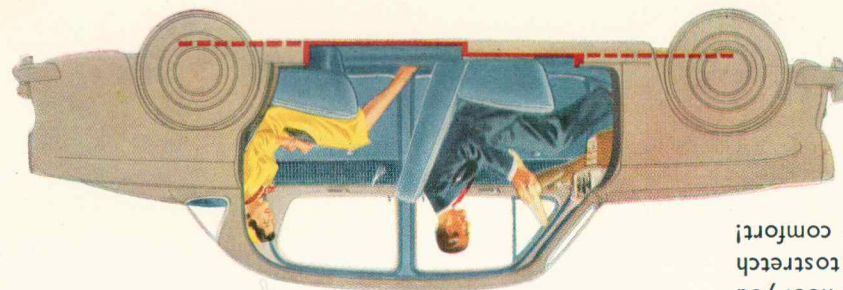
A new high standard of luxury and convenience—new style interior trim and courtesy light operated by the opening of front doors. Streamlined fascia has quick-view instruments and handy controls. Provision for Ekco radio (as shown) or H.M.V.—also heater, clock, ammeter and oil gauge as extras.



NEW Elegance of de Luxe Saloon Interior



HILLMAN
proved the finest of them all



See how both seats are now cradled in-
side the longer wheelbase of the new
Hillman. Everyone shares the pleasure
of the smoother, stabilized Hillman ride.

Generous 'full-width' design of new seats gives more
seating space, more elbow-room. With lower floor you
have maximum head-and-leg-room, more room to stretch
out and relax. You travel in lounge-chair comfort!



Deep comfort in
wide rear seat

