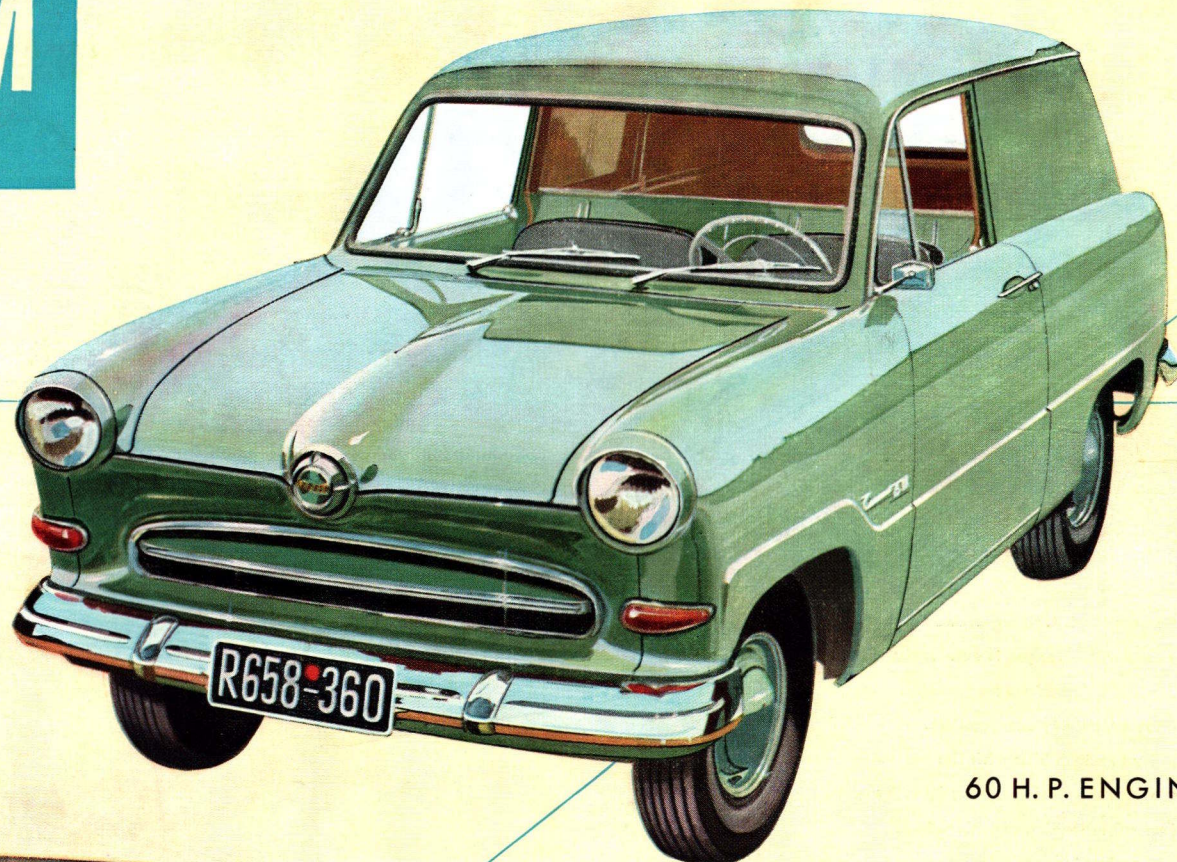


# TAUNUS

# 15 M

*Delivery Van*

*and Combi-Car*

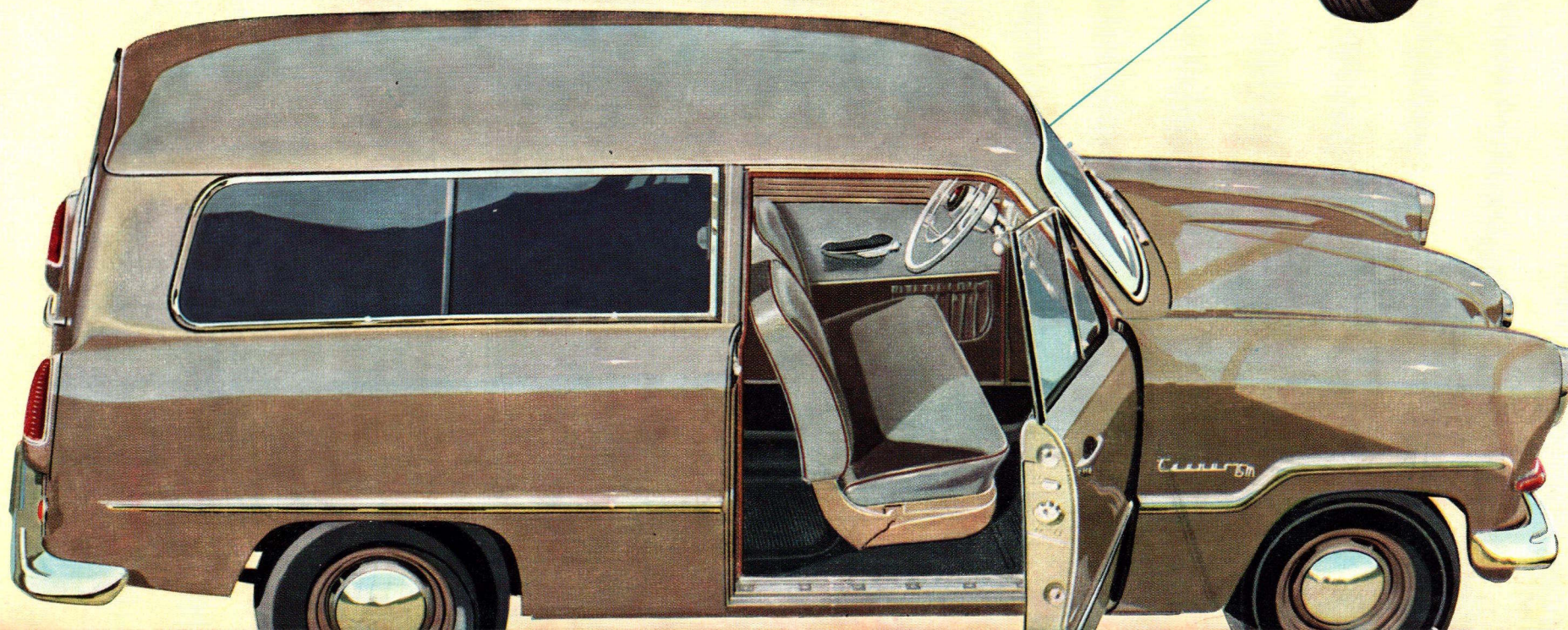


60 H. P. ENGINE

ECONOMICAL

AND

ATTRACTIVE



*Gotthard*  
59

# THE TAUNUS 15 M

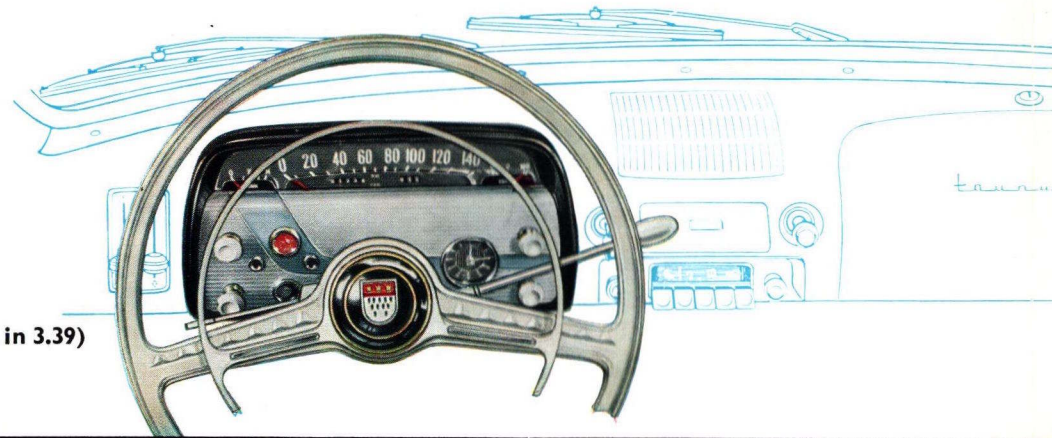
## COMBI-CAR



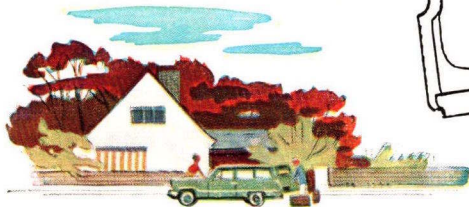
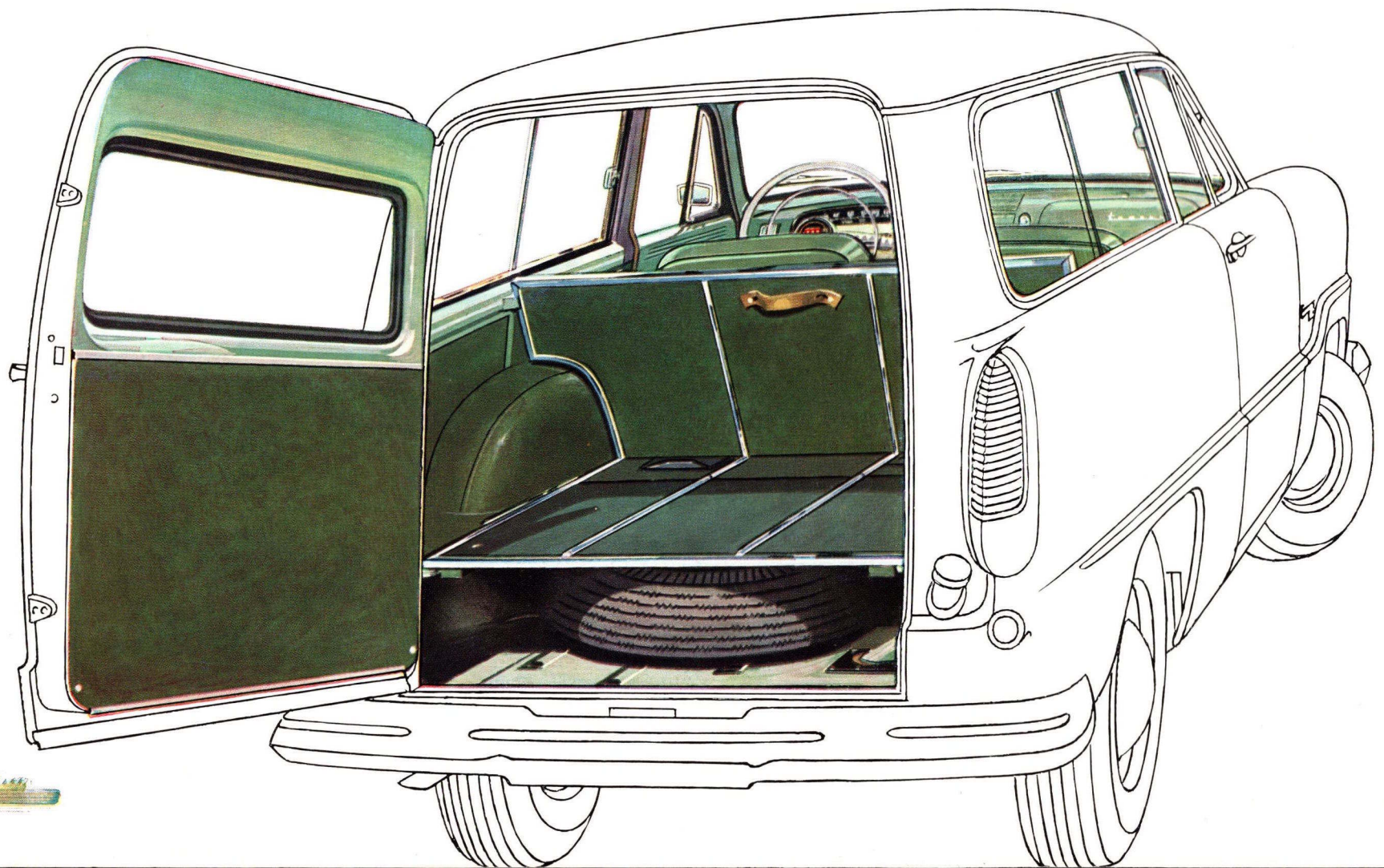
The ideal combination of a passenger car and a delivery van.

Perfectly combined for pleasure and work · 60 H.P.

Cruising speed of 115 km/h (72 m.p.h.) · Climbing ability of 29.5% (1 in 3.39)



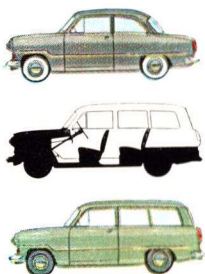
The new 60 H.P. short-stroke engine with its favourable torque is extremely adaptable. Abundant reserves of power, speedy acceleration, ability to climb hills with the utmost ease, are the distinguishing features of an engine which combines high power of endurance with economy. In short, the Taunus 15 M Combi-Car incorporates all that has been found necessary and desirable for a general purpose vehicle. The Taunus 15 M Combi-Car is the vehicle you need to render you long years of service, and to fulfill a wide range of different tasks and duties.



A glance at the large multiple instrument panel, and you gain the impression of having before you a modern PASSENGER CAR with every driving comfort. Take a glimpse through the open rear door into the interior—and behold, the ALL-PURPOSE VEHICLE with the large loading space.

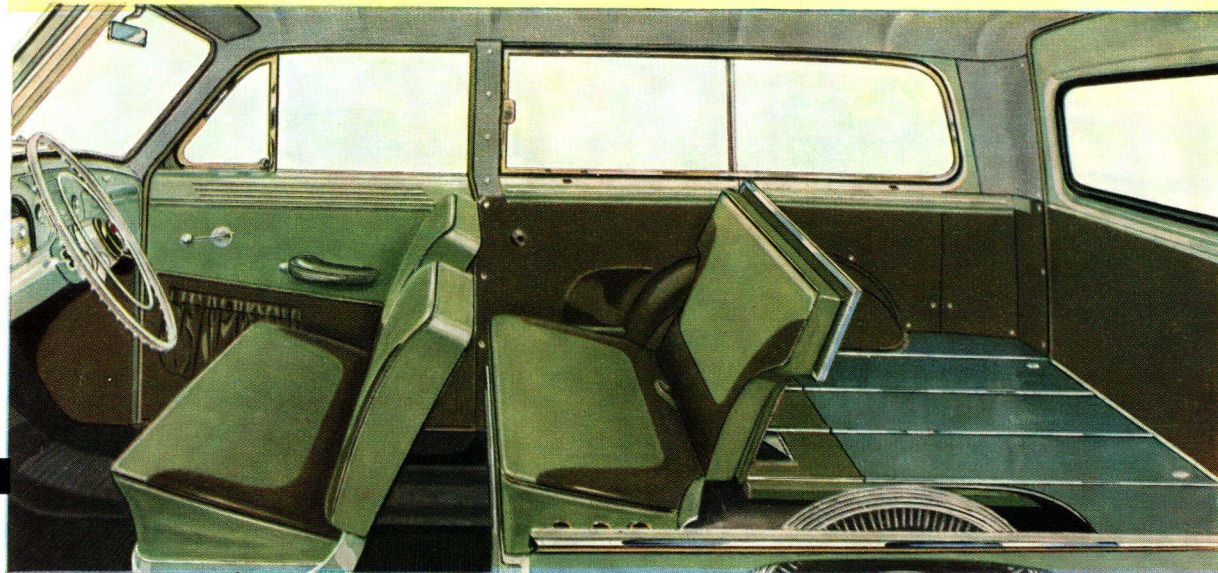


The desire to have a car with a twofold purpose has been made reality in a most favourable manner through the production of the Taunus 15 M COMBI-CAR. It offers all the well-proved constructional features and qualities of a modern passenger car, yet at the same time meeting all the requirements demanded of an economical transport vehicle of this size.

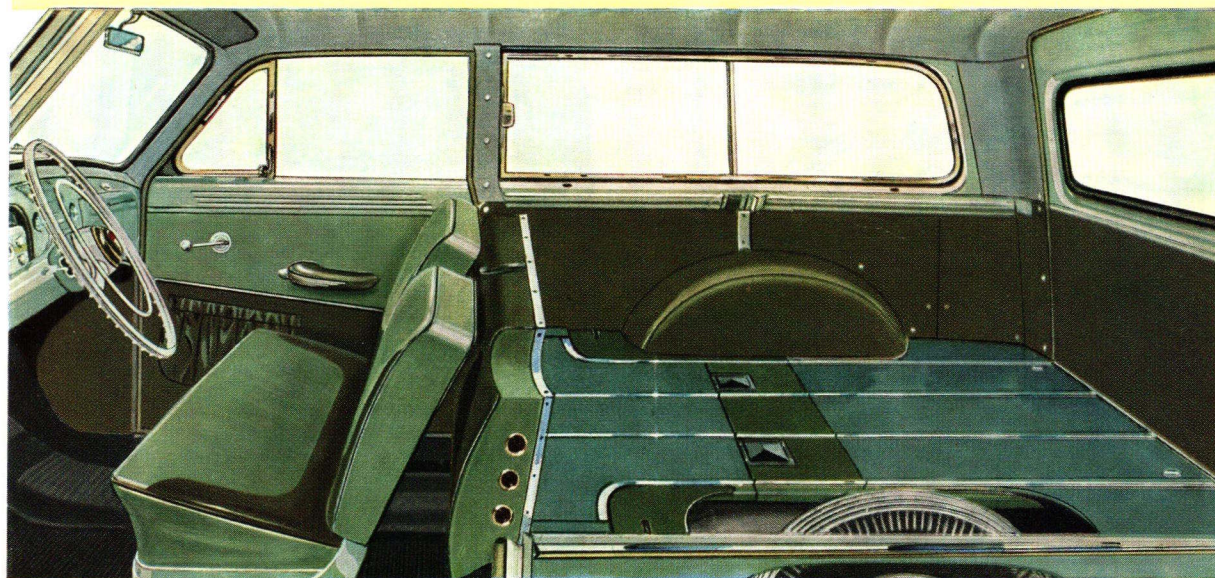


The Taunus 15 M COMBI-CAR, a member of the large Ford family, is a brother of the TAUNUS 15 M. With its beautifully designed, strong all-steel body, its representative appearance and its exceptionally good driving properties, the Taunus 15 M COMBI-CAR fully lives up to all that is today expected of a first-class passenger car.

The Taunus 15 M COMBI-CAR has all the features of an outstanding general-purpose vehicle used for business and numerous other duties: a large loading space easily accessible through the large rear door, excellent suspension (important for transporting fragile goods), and amazingly low running costs. It is fast and manoeuvrable — its magnificent roadholding and first-class brakes ensure maximum driving safety.



Its wide upholstered benches provide comfortable seating for four to five persons, leaving ample space at the rear for a large amount of luggage.



A few small hand adjustments, and you have the large loading space. The rear bench is raised and folded to the front, serving as a partition. The back rest "disappears into the hollow" thus producing a perfectly even floor for loading goods.

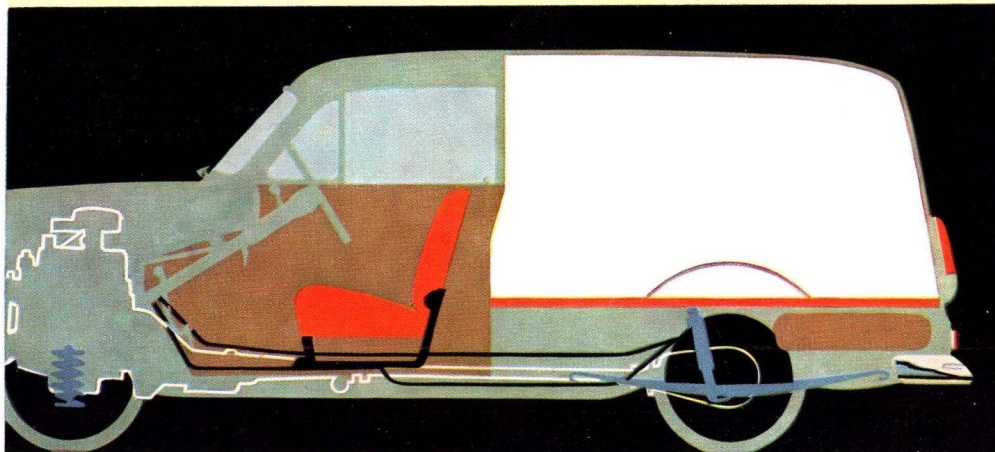


## THE TAUNUS 15 M DELIVERY VAN

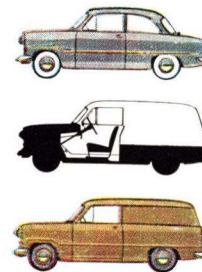
The ideal vehicle for speedy and economic transport — it creates good-will for its owner!



An opening in the partition between the driver's seat and the loading space allows the transport of very long goods such as carpets, rolls of linoleum, pipes and curtain rods.



The large interior of the TAUNUS 15 M Delivery Van has a most useful loading area of 1.75 m<sup>2</sup> (18.85 sq. ft.)

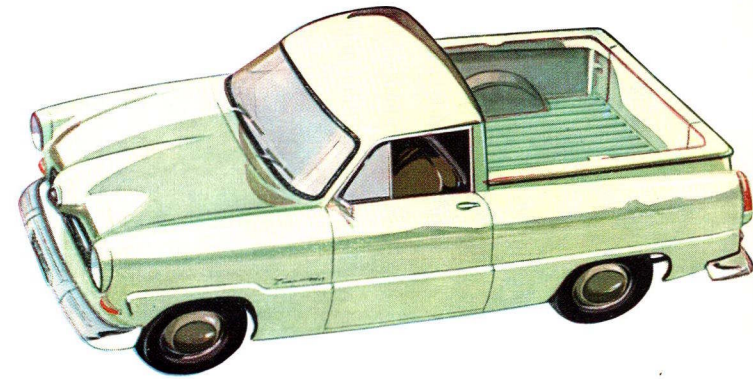
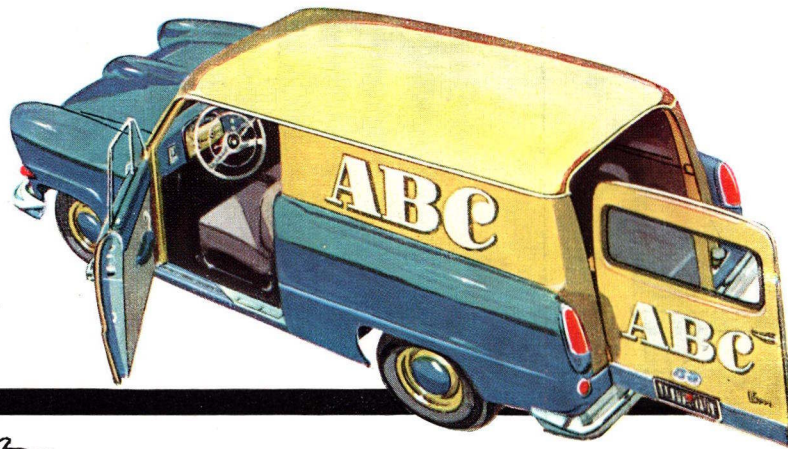


**R**elated to the TAUNUS 15 M, the TAUNUS 15 M DELIVERY VAN is equipped with all the same good qualities of the well-proved passenger car. The large, curved windscreen and broad side windows with swing-out triangular ventilating windows guarantee a degree of visibility as yet unsurpassed, thus increasing safety on the roads.

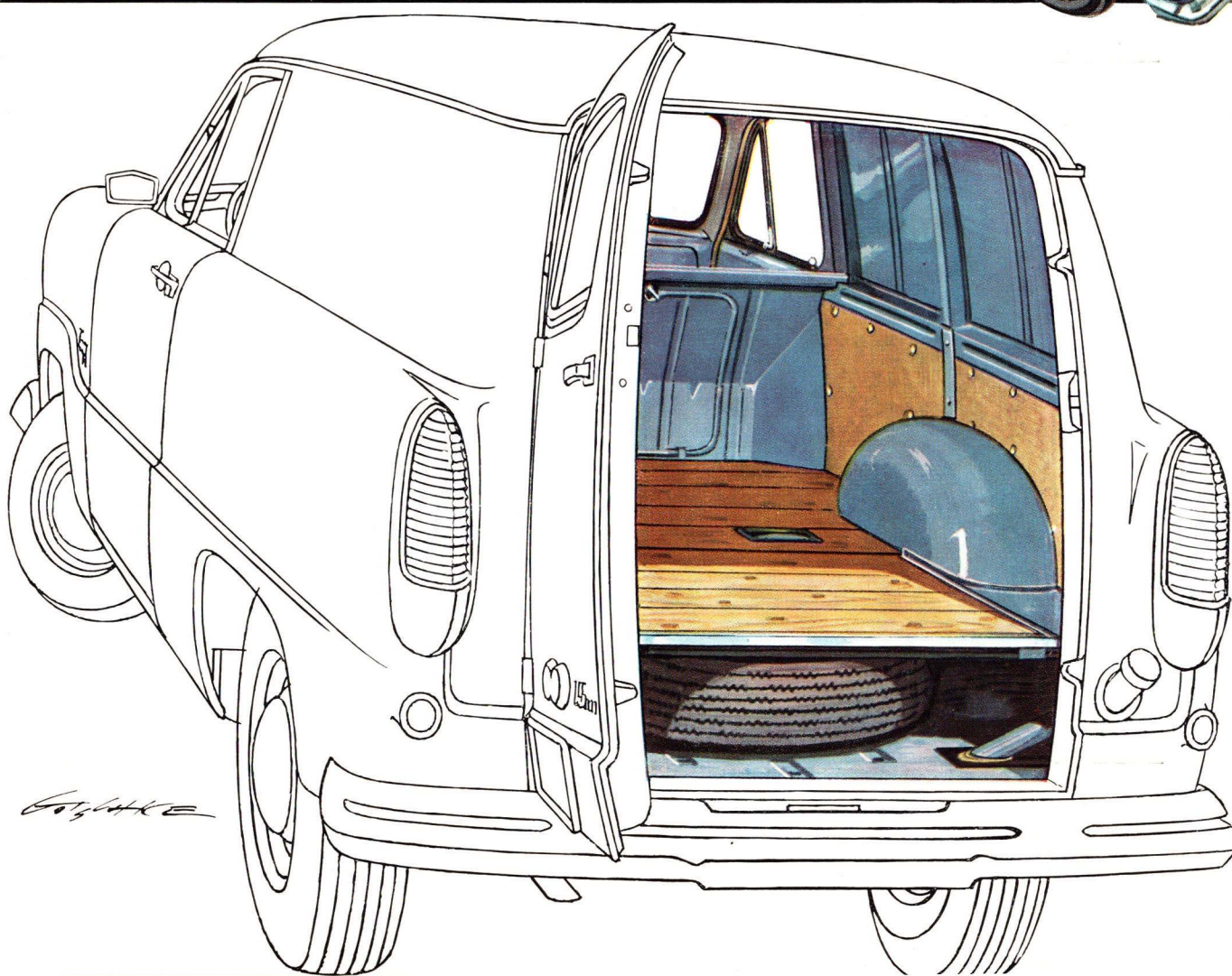
The first-class suspension combined with excellent roadholding is a great advantage for the transport of fragile loads, such as glass, china-ware and edibles. Even in wet weather and on sharp bends, the driver's confidence in his vehicle remains unshaken. The TAUNUS 15 M DELIVERY VAN is a practical, speedy and manoeuvrable general-purpose vehicle with a large, easily accessible loading space, capable of carrying loads of more than 500 kg (10 cwt). Added up, all its advantages make it the ideal vehicle for cheap and fast transport in practically every trade. With its representative appearance, it is a recommendation for its owner.



The large outside area of the body of the TAUNUS 15 M Delivery Van provides excellent possibilities for effective advertising.



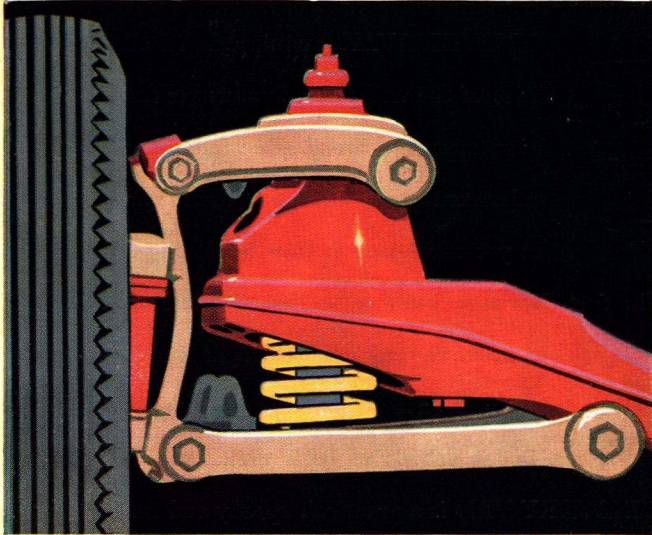
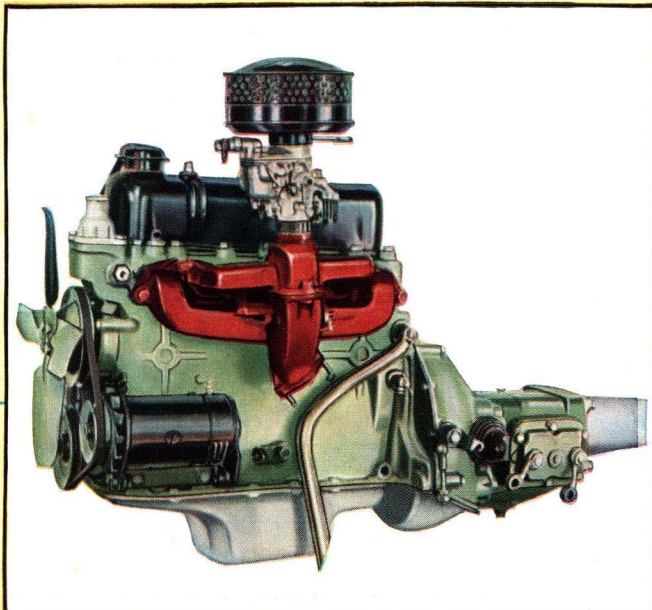
The TAUNUS 15 M Pick-up with its all-steel body is especially suitable for transporting awkward loads.



The body of the vehicle conforms with modern international styling. The low centre of gravity and the rigid, hypoid-gearred rear axle make for greater skid-resistance and steadiness on bends. The ends of the semi-elliptic rear springs are interlaid with rubber to take up friction, thus obviating the need for special maintenance.

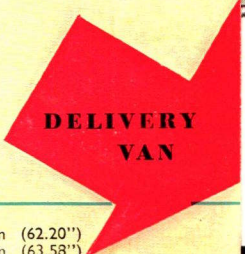
The large rear door gives easy access to the interior, enabling crews to do their work briskly and save time when loading and discharging. The spare wheel is housed beneath the loading floor and does not take up any loading space.





The Ford-Werke AG, Köln, whose policy is one of continuous improvement, reserves the right to discontinue or change at any time specifications or design without notice and without incurring any obligation.

The economical short-stroke engine of the new TAUNUS 15 M, is also installed in the Taunus 15 M COMBI-CAR. With its output of 60 H.P. (SAE-Rating) and its high torque, it makes the car speedy, manoeuvrable and capable of climbing steep gradients. Its autothermic pistons obviate running-in instructions. The blocker-type synchromesh transmission makes it a pleasure to shift gears. The front wheels are suspended independently on trapeze swing arms, with maintenance-free coil springs. Double-acting shock absorbers are positioned inside the springs. The self-supporting body of the Taunus is robust and safe, and its low weight has a very favourable effect on the performance of the vehicle. Worthy of note is the metal finish used by FORD, a synthetic resin baked enamel which retains its high gloss for an extremely long period.



### TECHNICAL SPECIFICATIONS

#### ENGINE

No. of cylinders 4  
 Bore 82 mm (3.23")  
 Stroke 70.9 mm (2.79")  
 Displacement 1498 ccm (91.4 cu. ins.)  
 Compression ratio 7.0:1  
 Maximum output 60 HP (SAE)/4500 RPM  
 Maximum torque 11.3 mkg (81.7 ft. lbs.)/2000 RPM

Valves OHV, adjustable  
 Crankshaft hollow-cast, triple mounted  
 Lubrication pressure feeding by oil-pump  
 Cooling system water-pump

#### TRANSMISSION

Clutch dry single disc  
 Gear ratios 3-speed 1 3.27:1 4-speed (opt.) I 3.39:1  
 Forward speeds II 1.69:1 III 1.33:1 IV 1.0 :1  
 Reverse 3.97:1 4.12:1  
 Synchronized gears 2nd and 3rd 2nd, 3rd, 4th  
 Gear shift steering column gear shift

#### REAR AXLE

Type rigid, hypoid gears  
 Ratio 4.44:1

#### STEERING

Type Gemmer/Worm and roller type

#### BRAKES

Service brake hydraulic, acting on 4 wheels  
 front two leading-shoe  
 Hand brake mechanical, acting on rear wheels

#### WHEEL SUSPENSION AND SPRINGS

Wheel suspension, front single suspension  
 rear rigid  
 Springs, front coil springs  
 rear longitudinal leaf springs  
 Shock absorbers, front and rear double acting, telescopic

#### WHEELS AND TIRES

Tire size, front and rear super-balloon 6.40—13  
 (tubeless tires are available at request)

#### ELECTRICAL SYSTEM

Battery capacity 84 ampere-hours  
 Voltage 6 volts  
 Generator 130 watts

#### WEIGHTS

Perm. axle cap. front 650 kg (1433 lbs.)  
 rear 1000 kg (2205 lbs.)  
 Gross vehicle weight 1600 kg (3527 lbs.)  
 Curb weight Van 1005 kg (2216 lbs.) (incl. driver)  
 Curb weight Combi-Car 965 kg (2127 lbs.) (excl. driver)  
 Curb weight Pick-up 985 kg (2172 lbs.) (incl. driver)

Nominal carrying capacity Van 595 kg (1312 lbs.)  
 Nominal carrying capacity Combi-Car 635 kg (1400 lbs.)  
 Nominal carrying capacity Pick-up 615 kg (1356 lbs.)

#### MEASUREMENTS

Wheelbase 2489 mm (97.99")  
 Tread, front and rear 1220 mm (48.03")  
 Ground clearance 170 mm (6.69")  
 Total length 4060 mm (159.84")  
 Total width 1580 mm (62.20")  
 Total height 1615 mm (63.58")  
 Loading space, length 1530 mm (60.24")  
 Loading space, width 1230 mm (48.43")  
 Loading space, height 961 mm (37.83")

without spare wheel 995 mm (39.17")  
 Rear loading door, width 884 mm (34.80")  
 Rear loading door, height 989 mm (38.94")  
 Distance: ground-edge of loading platform, loaden 580 mm (22.83")  
 Distance: ground-edge of loading platform, unladen 650 mm (25.59")  
 Loading surface 1.75 m<sup>2</sup> (19.02 sq. ft.)  
 Loading space 1.75 m<sup>3</sup> (61.83 cu. ft.)

#### MEASUREMENTS COMBI-CAR

Wheelbase 2489 mm (97.99")  
 Tread, front and rear 1220 mm (48.03")  
 Ground clearance 170 mm (6.69")  
 Total length 4060 mm (159.84")

Total width 1580 mm (62.20")  
 Total height 1615 mm (63.58")  
 Loading space, length 1472 mm (57.95")  
 Loading space, width 1230 mm (48.43")  
 Loading space, height 961 mm (37.83")  
 Loading space, height without spare wheel 995 mm (39.17")  
 Rear loading door, width 884 mm (34.80")  
 Rear loading door, height 989 mm (38.94")  
 Distance: ground-edge of loading platform, loaden 580 mm (22.83")  
 Distance: ground-edge of loading platform, unladen 650 mm (25.59")  
 Loading surface 1.60 m<sup>2</sup> (17.39 sq. ft.)  
 Loading space 1.60 m<sup>3</sup> (56.54 cu. ft.)

#### MEASUREMENTS PICK-UP

Wheelbase 2489 mm (97.99")  
 Tread, front and rear 1220 mm (48.03")  
 Ground clearance 170 mm (6.69")  
 Total length 4060 mm (159.84")  
 Total width 1580 mm (62.20")  
 Total height 1615 mm (63.58")  
 Loading space, length 1600 mm (62.99")  
 Loading space, width 1440 mm (56.69")  
 Rear loading door, width 900 mm (35.43")  
 Distance: ground-edge of loading platform, loaden 580 mm (22.83")  
 Distance: ground-edge of loading platform, unladen 650 mm (25.59")  
 Loading surface 2.3 m<sup>2</sup>

#### CAPACITIES

Fuel tank: 34 l (7.48 Imp. gals. = 9.98 US gals.)  
 Cooling system: 6.5 l (11.44 Imp. pts. = 13.74 US pts.)  
 with heater 7 l (12.32 Imp. pts. = 14.79 US pts.)  
 Sump (refill capacity): 2.5 l (4.40 Imp. pts. = 5.28 US pts.)  
 Gear box: 1.0 l (1.76 Imp. pts. = 2.11 US pts.)  
 Rear axle: 1.12 l (1.97 Imp. pts. = 2.37 US pts.)

#### GENERAL DATA

Maximum speed 115 km/h (72 mph)  
 Cruising speed 115 km/h (72 mph)  
 Maximum climbing ability 3-speed transmission 4-speed transmission  
 I 29.5% (1 in 3.39) I 30% (1 in 3.33)  
 II 13.5% (1 in 7.41) II 15% (1 in 6.66)  
 III 7.5% (1 in 13.33) III 10% (1 in 10.0)  
 IV 7.5% (1 in 13.33) IV 7.5% (1 in 13.33)  
 Min. turning circle diam. 11.5 m (37.73 ft.)



Your authorized Ford dealer

**FORD WERKE AKTIENGESELLSCHAFT KÖLN**