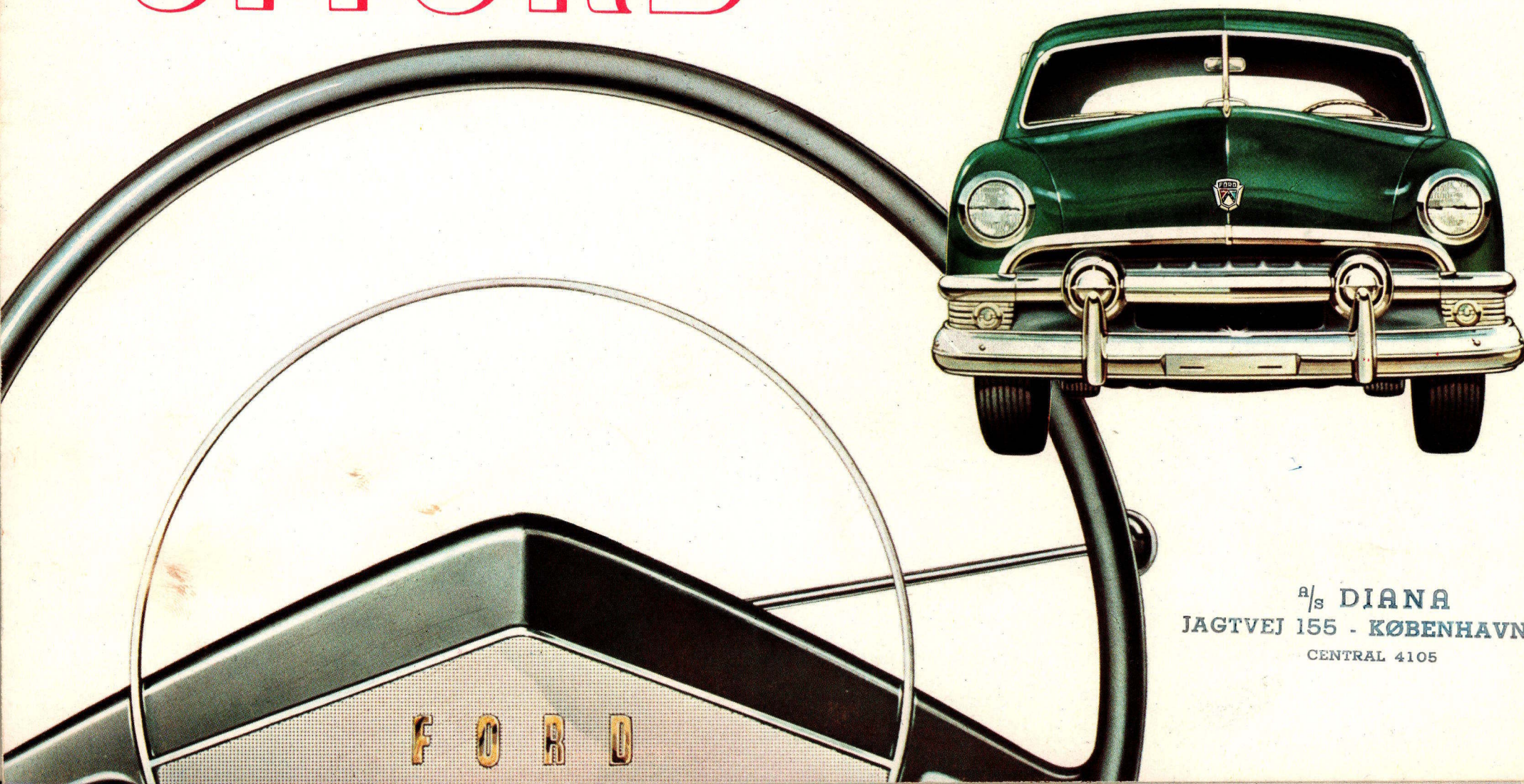


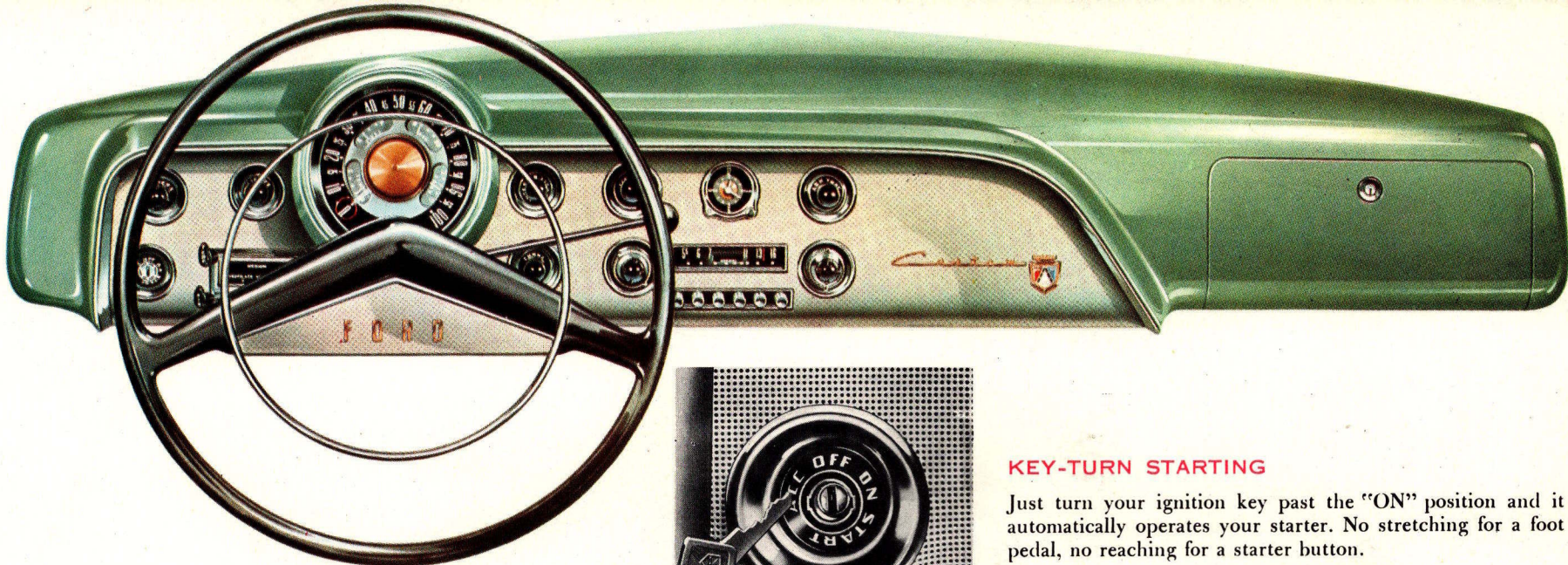
'51 FORD

FORD STEPS AHEAD
WITH 43 "LOOK AHEAD" FEATURES



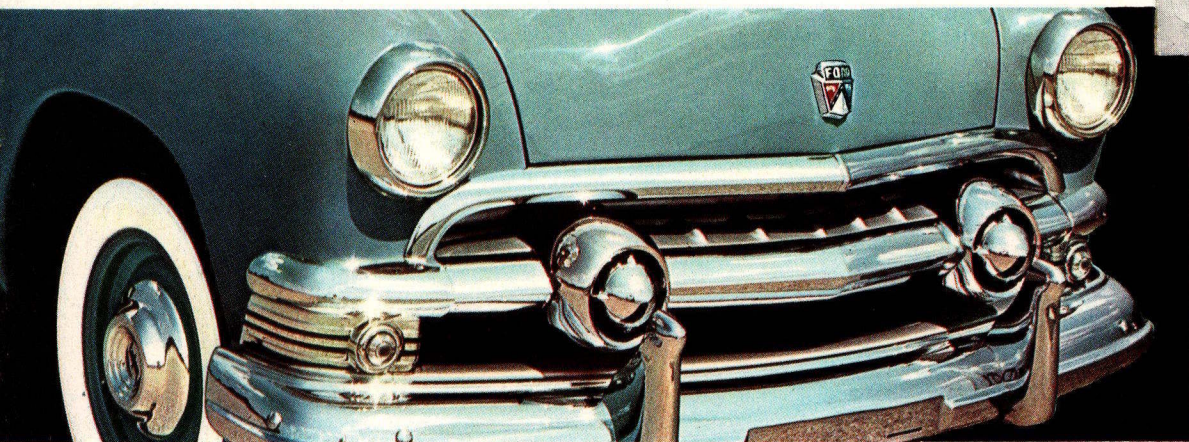
^{a/s} DIANA
JAGTVEJ 155 - KØBENHAVN N.
CENTRAL 4105

THEN, TOO, NOTE how the "Look Ahead" styling of the compact '51 "Safety-Glow" Control Panel is so completely new. The main panel is finished in a colorful metallic color to harmonize with the "Luxury Lounge" Interior. The sub-panel, finished in satin-chrome perforated metal, groups all instruments and controls for easier reading and greater convenience. The new "Chanalited" Instrument Cluster is exclusive to Ford. And each control is individually lighted by Ford's unique "Glow-Cup" system.

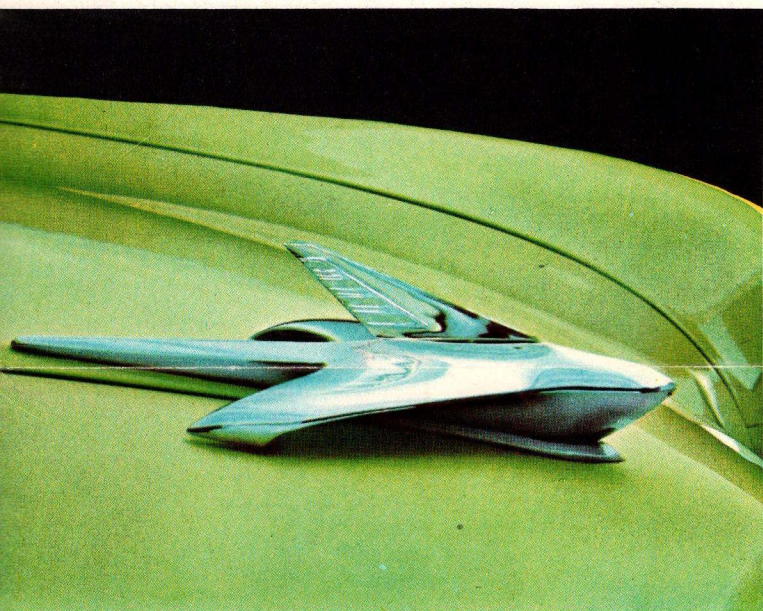


KEY-TURN STARTING

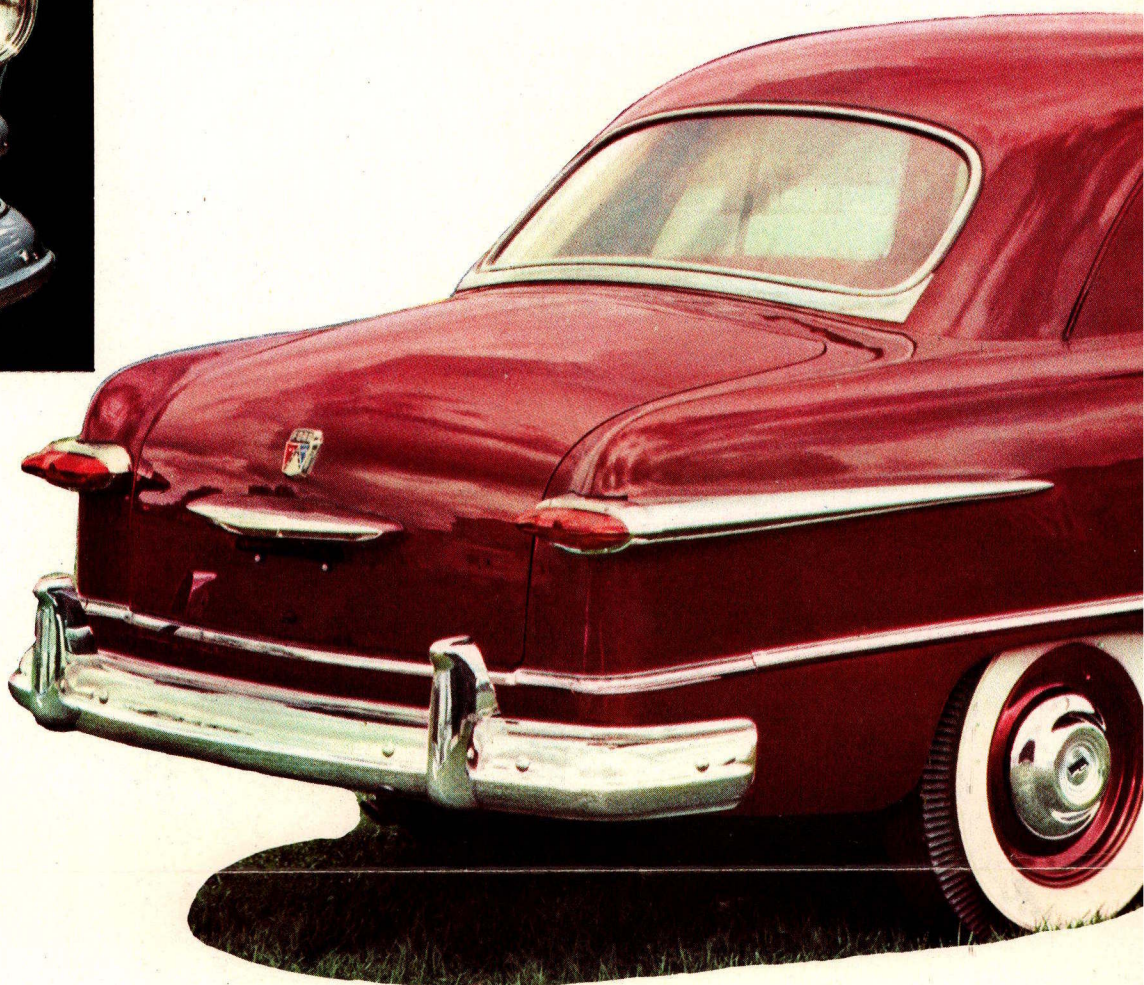
Just turn your ignition key past the "ON" position and it automatically operates your starter. No stretching for a foot pedal, no reaching for a starter button.



New "Dual Spinner" Grille is another Ford triumph in automotive styling. There's no mistaking the '51 Ford.



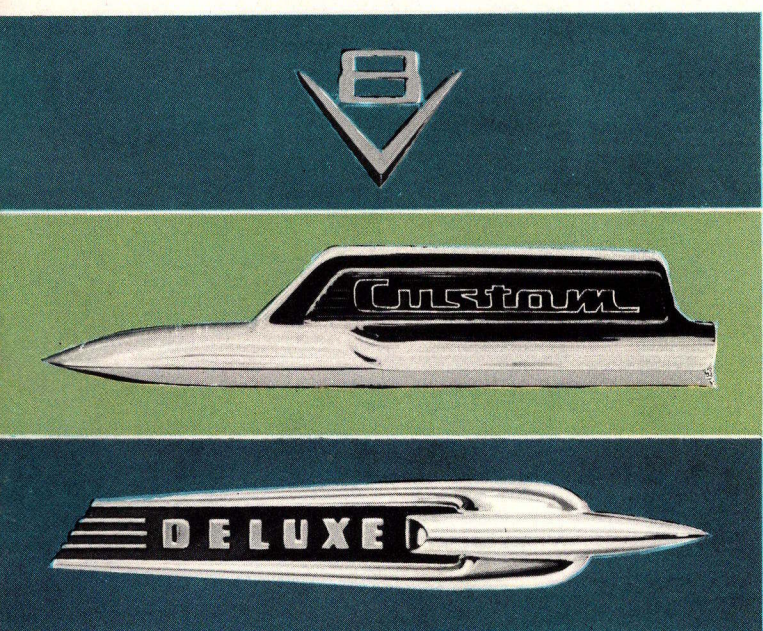
The '51 Ford's striking grace and beauty of line begin with the new hood ornament.



New "Tell-Tale" Rear Lights with New Jet-Styled Windsplits add a "years ahead" look.

LUXURY THAT LASTS

because the quality is there



Smart identification insignia combine good looks with quick recognition.



Classic dignity and simplicity of design characterize the massive new Deep-Section Wheel Caps.



Now, LOOK at the luxurious interior of the '51 Ford. You'll love the smart, bright new exclusive Fordcraft upholstery fabrics which are "color-keyed" to the body exterior colors. Extra-durable new Craftcord, Craftweave and Craftloom materials—all in clear, rich color combinations—are available in Deluxe and Custom models in combination with body colors as shown at right.

Craftloom—two-tone gray pile fabric with orange pin stripe

Craftweave—Gray broadcloth with black and blue pin stripe

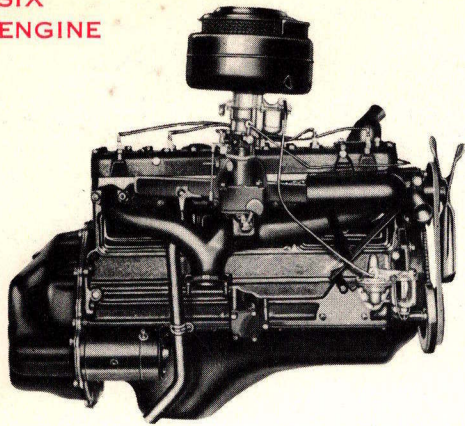
Craftweave—Gray broadcloth with white star dots

Craftloom—tan pile fabric with maroon pin stripe

Craftcord—two-tone brown cord fabric

Craftweave—two-tone green stair check broadcloth

95-H.P.
SIX
ENGINE



V-8 ENGINE: 100 brake h.p.; 3.1875 in. bore, 3.75 in. stroke; 32.5 taxable h.p.; "Power Dome" combustion chambers; tin-plated Super-Fitted aluminum pistons, offset pins, 4-rings with new chrome-plated top ring; new "Rota-Quiet" valves; Quiet-contoured camshaft; "Silent-Spin" fan; three-point accessory drive arrangement with narrow V-type belts; laminated composition material timing gear; full-pressure lubrication; new "Full-Flo" fuel pump; * new 4-degree engine mounting angle; level-mounted "Deep Breath" intake manifold; new "Cushion-Quiet" engine mounting; "Equa-Flo" cooling with new positive-action type thermostats; new Waterproof ignition system with synthetic rubber boots over tops of spark plugs; new internally mounted exhaust heat valve; dry type air cleaner; ** oil filter at extra cost.

SIX ENGINE: 95 brake h.p.; 3.3 in. bore, 4.4 in. stroke; 26.1 taxable h.p.; new "Power Dome" combustion chambers; new tin-plated Super-Fitted aluminum pistons, new offset pins, 4-rings with new chrome-plated top ring; new "Rota-Quiet" valves; new Quiet-Contoured camshaft; new "Silent-Spin" three-blade fan; narrow V-type belt accessory drive; laminated composition material timing gear; full-pressure lubrication; new "Full-Flo" fuel pump; * new 4-degree engine mounting angle; new level-mounted "Deep Breath" intake manifold; new "Cushion-Quiet" engine mounting; selective-fit main bearings; new torsional vibration damper; "Equa-Flo"

*Special fuel and vacuum pump unit, optional at extra cost, is factory-installed on all cars sold in locations requiring vacuum booster windshield wiper operation and on all cars equipped with Overdrive.

**Oil bath type air cleaner, optional at extra cost, is factory installed on all cars where specified.

SPECIFICATIONS

cooling with positive-action type thermostat; new Waterproof ignition system with synthetic rubber boots over tops of spark plugs; dry air type cleaner; ** oil filter at extra cost.

CLUTCH: semi-centrifugal type clutch with redesigned linkage for softer, easier pedal operation.

CONVENTIONAL TRANSMISSION: selective gear type, 3 speeds forward, one reverse; redesigned stronger helical gears; new forged-steel synchronizers for second and third speeds.

OVERDRIVE: optional at extra cost; fourth-speed gear that cuts in at 27 mph (approx.), cuts out at 21 mph (approx.); ratio 0.70 to 1.

DOUBLE-DROP FRAME: improved box-section side rails with strengthened rear end construction; 5 cross-members. Convertible Club Coupe and "Country Squire" Station Wagon frames specially designed.

INDEPENDENT FRONT WHEEL SUSPENSION: swinging link type with advanced "Hydra-Coil" springs; new tubular, double-acting "Viscous Control" shock absorbers; one-piece, rubber-mounted stabilizer.

NEW VARIABLE-RATE REAR SPRING SUSPENSION: new tension type with advanced "Hydra-Coil" springs, longitudinally mounted; rubber bushings at shackles and brackets and impregnated inserts between tips of upper leaves; new tubular, double-acting "Viscous Control" shock absorbers. "Country Squire" Station Wagon has 9-leaf semi-elliptic springs.

REAR AXLE: semi-floating type; hypoid gears; ratios for all models except Station Wagon: with conventional transmission 3.73 to 1 standard, 4.10 to 1 optional; with Overdrive 4.10 to 1 standard; 3.54 to 1 optional. Ratios for Station Wagon: with conventional transmission 3.92 to 1 standard, 4.27 to 1 optional; with Overdrive 4.27 to 1 standard.

NEW DOUBLE-SEAL KING-SIZE HYDRAULIC BRAKES: 4-wheel duo-servo type; composite steel and cast iron drums; molded linings; lining area, 179.7 sq. in. on Station Wagon, 173.1 sq. in. on other models.

SYMMETRICAL STEERING LINKAGE: worm and roller steering gear with needle-bearing mounted, triple-tooth roller; 17.7 to 1 gear ratio; 23.2 to 1 over-all steering ratio.

WHEELS AND TIRES: 6.00 x 16 4-ply tires on 4½" rims standard, with 6.70 x 15 4-ply tires on 5" rims optional at extra cost on Deluxe models; 6.70 x 15 4-ply

tires on 5" rims standard on Custom and Crestliner models; 7.10 x 15 6-ply tires on 5" rims standard on Station Wagon. Black sidewalls standard, white sidewalls optional at extra cost.

EXTERIOR DIMENSIONS: 114" wheelbase; 56" tread, front and rear (Station Wagon rear 60"); over-all length 197.3" (Station Wagon 208.9").

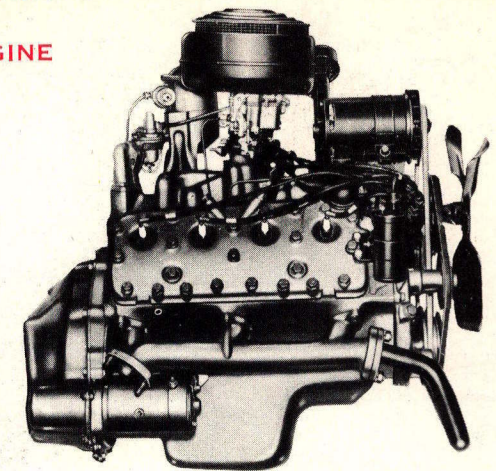
12 BODY COLORS: Sheridan Blue, Alpine Blue, Sea Island Green, Silvertone Gray and Mexacalli Maroon Metallic for all models except Crestliner; Hawthorne Green Metallic, Hawaiian Bronze Metallic, Greenbrier Metallic and Culver Blue Metallic for Custom models and Station Wagon; Greenbrier Metallic and Black, Sportsman's Green and Black, Hawaiian Bronze Metallic and Brown and All Black with Light Tan Top combinations for Crestliner. Sportsman's Green also available for Convertible. Raven Black is available for all models.

INSTRUMENTS AND CONTROLS: (except Station Wagon). New "Safety-Glow" Control Panel with new "Glow-Cup" control knobs with rheostat intensity regulation. New "Chanalited" instrument cluster with fuel level, oil pressure, battery charge and water temperature indicators grouped inside speedometer. New four-position combination starter-ignition switch; head lamp beam control switch on toe board; interior light switch on instrument panel; windshield wiper control; ventilating duct controls; T-handle controls for hood latch and parking brakes; finger-tip gearshift lever. Station Wagon: restyled two-tone instrument panel with radio grille; "Black Light" instrument cluster illumination; starter push button; combination exterior light and instrument panel light switch; interior light switch on left center pillar; head lamp beam control switch on toe board; windshield wiper control; ventilating duct controls; T-handle controls for hood latch and parking brakes; finger-tip gearshift lever.

DELUXE EQUIPMENT: New Air-Wing steering wheel with Deluxe horn bar at center; new Extra Power dual windshield wipers; twin horns with new Weatherproof mounting; rear view mirror on windshield center bar; ash tray and locking-type glove compartment in instrument panel; sun visor on driver's side; interior light on center pillar. Foam rubber pad and non-sag springs in front seat; new "Posture Control" front seat mechanism. New "Luxury Lounge" Interiors. New long lasting Fordcraft Fabrics with choice of either Craftloom or Craftweave upholstery materials.

CUSTOM EQUIPMENT: (in addition to or in place of Deluxe items). Full circle horn ring with Custom horn bar; two sun visors; cigarette lighter; stem-wound clock; bright metal exterior reveal molding at windshield and

100-H.P.
V-8
ENGINE



at rear window (except Convertible); one ash tray in rear compartment of Fordor, two in other models; two assist straps in Tudor and Club Coupe; robe cord in Fordor and Convertible; arm rests on front doors and at sides of rear seats (except Convertible); two interior lights (one in Convertible) operated by automatic door switches or by manual switch; Ford Crest and Custom lettering on instrument panel. New "Luxury Lounge" Interiors. New "Color-Keyed" Fordcraft Fabrics with choice of Craftloom, Craftcord or two Craftweave upholstery materials for Sedans and Club Coupe; choice of 8 trim combinations for Convertible (four deep-buffed leather and four deep-buffed leather and Craftcord).

CRESTLINER EQUIPMENT: (in addition to or in place of Custom items). Bright metal interior trim molding at windshield; glass wool padded vinyl top covering with bright metal molding border; bright metal full wheel covers; rear fender shields; outside rear view mirror, each side; Ford Crest and Crestliner lettering on instrument panel. New Crestliner "Luxury Lounge" Interiors. New "Color-Keyed" Fordcraft Fabrics with choice of three Craftcord and simulated leather upholstery combinations.

"COUNTRY SQUIRE" STATION WAGON EQUIPMENT: (in addition to or in place of Deluxe items). Full circle horn ring with Custom horn bar; two sun visors; cigarette lighter; stem-wound clock; interior dome light operated by door switches or by manual switch; "Stowaway" center seat and removable rear seat; arm rests on doors; flush tailgate with skid strips and torsion bar type hinge; lift gate with one-hand release prop arm. Interior trim is tan and brown vinyl and artificial leather; back of center seat back, interior of tailgate and floor of load compartment is covered with heavy tan ribbed linoleum.

Overdrive, heater, radio and white sidewall tires optional at extra cost.

The specifications contained herein were in effect at the time this catalog was approved for printing. The Ford Division of the Ford Motor Company, whose policy is one of continuous improvement, reserves the right, however, to discontinue models at any time, or change specifications, design, or prices without notice and without incurring obligation.

KEEP THE FUTURE IN YOUR FORD

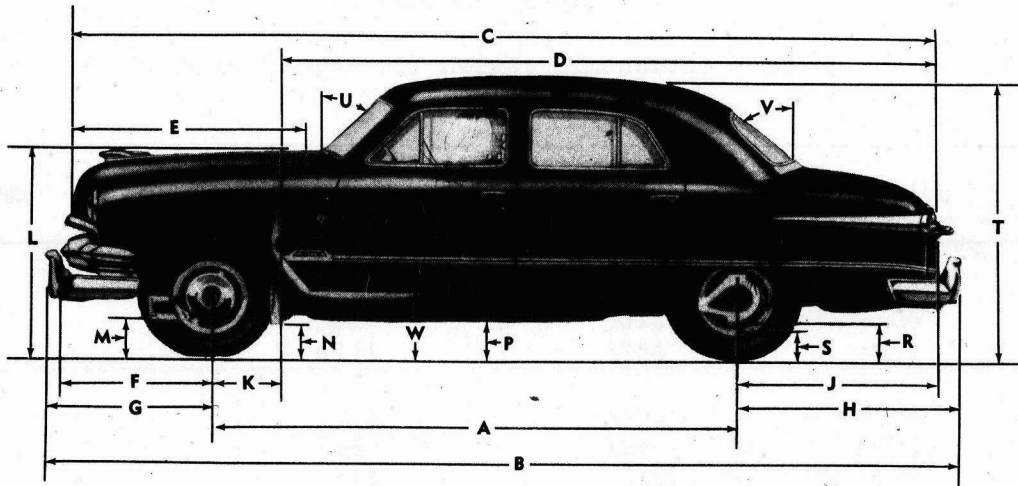
THE 1951 FORD . . . with its many "Look Ahead" features . . . is quality built for traditional Ford economy and low maintenance cost during its many years of life. Ford Dealers are equipped to protect your Ford's future through the finest of service facilities, readily available in every part of the country.

With Ford-trained Mechanics, Genuine Ford Parts, Factory-approved Methods and Special Ford Equipment just right for your Ford, your Ford Dealer is prepared to keep your car in finer shape and save you time, trouble and money. So, why not make it a habit to see your Ford Dealer for regular Ford care.

R/S DIANA
JAGTVEJ 155 - KØBENHAVN N.
CENTRAL 4105

ALL MODELS

(Illustration for location of dimension lines only.)



EXTERIOR LENGTHS AND HEIGHTS

ALL MODELS

Exterior Length and Height Dimensions—inches

ITEM	DESCRIPTION	SEDANS and HARD-TOP COUPES	CONVERTIBLE COUPE	STATION WAGON
A	Wheelbase	114.0	114.0	114.0
B	Over-all length*	197.3	197.3	208.9
C	Package size	186.4	186.4	194.2
D	Body length	141.2	141.2	149.0
E	Hood length at centerline	48.7	48.7	48.7
F	Grille to centerline of front axle	32.0	32.0	32.0
G	Bumper guard to centerline of front axle	35.8	35.8	35.8
H	Centerline of rear axle to bumper guard	47.5	47.5	59.0
J	Centerline of rear axle to end of body	42.2	42.2	50.0
K	Dash to centerline of front axle	15.0	15.0	15.0
L	Ground to hood (maximum)†	46.1	46.1	46.3
M	Ground clearance at front suspension†	8.6	8.6	8.4
N	Ground clearance at bell housing†	8.6	8.6	8.8
P	Ground clearance at frame side rail†	8.5	8.5	9.1
R	Ground clearance at rear axle housing†	8.2	8.2	7.8
S	Ground clearance at shock absorber†	7.8	7.8	7.7
T	Over-all height: with design load†	63.2	62.4	68.8
	at curb weight	64.7	63.9	70.8
U	Windshield slope (degrees)	47	47.4	44
V	Back window slope (degrees)	49.5	52	30
W	Floor height at scuff plate†	14.0	14.0	15.3

*Station Wagon over-all length with tailgate down is 212.7.

†Measured with vehicle under design load: 300 lb. front seat, 450 lb. rear seat, plus 300 lb. in Station Wagon middle seat.

EXTERIOR LENGTHS AND HEIGHTS

A/S DIANA
JAGTVEJ 155 - KØBENHAVN N.
CENTRAL 4105

ALL MODELS (page G-3)

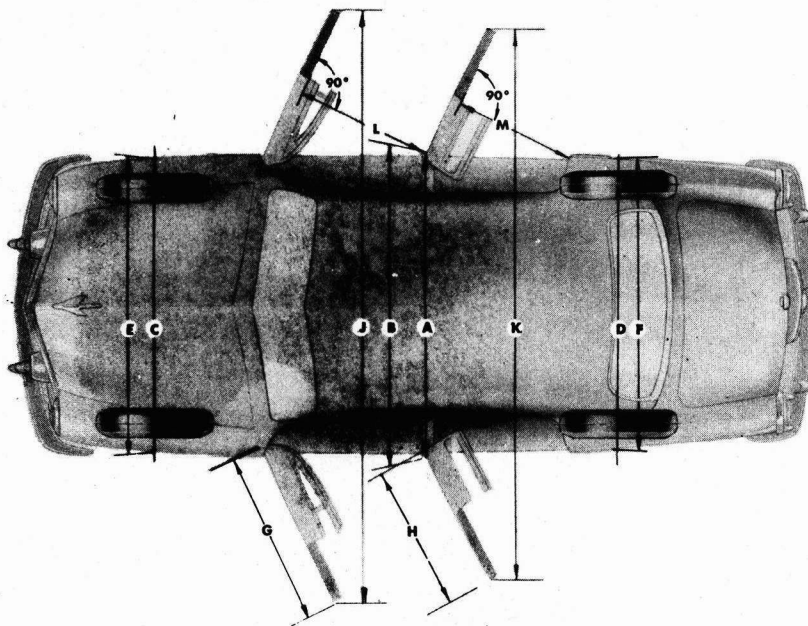
Exterior Length and Height Dimensions - mm

Item	Sedans and Hard-Top Coupes	Convertible Coupe	Station Wagon
A	2845	2845	2845
B	5012	5012	5306
C	4734	4734	4933
D	3586	3586	3785
E	1237	1237	1237
F	813	813	813
G	909	909	909
H	1207	1207	1499
J	1072	1072	1270
K	361	361	361
L	1171	1171	1176
M	218	218	213
N	218	218	224
P	216	216	231
R	208	208	198
S	198	198	196
T	1605	1585	1747
	1643	1623	1798
U (grader)	47	47.4	44
V (grader)	49.5	52	30
W	356	356	389

5402 mm
136 kg - 204 kg - 136 kg

ALL MODELS

(Illustration for location of dimension lines only.)



EXTERIOR WIDTHS

ALL MODELS

Exterior Width Dimensions—inches

ITEM	DESCRIPTION	FORDOR SEDAN	STATION WAGON	ALL OTHERS
A	Maximum body width over sheet metal	71.7	76.4	71.7
B	Maximum body width over molding	72.9	76.4	72.9
C	Front tread width	56.0	56.0	56.0
D	Rear tread width	56.0	60.0	56.0
E	Maximum body width at front tread	69.3	69.3	69.3
F	Maximum body width at rear tread	69.4	74.0	69.4
G	Front door width	40.7	50.8	46.6
H	Rear door width	35.1	—	—
J	Width across open front doors	140.0	161.0	151.0
K	Width across open rear doors	130.0	—	—
L	Front door entrance width: pillar to door pillar to arm rest (except Deluxe models)	31.3 30.0	39.3 36.8	36.3 34.5
M	Rear door entrance width: pillar to door pillar to arm rest (except Deluxe models)	26.5 25.8	— —	— —

EXTERIOR WIDTHS

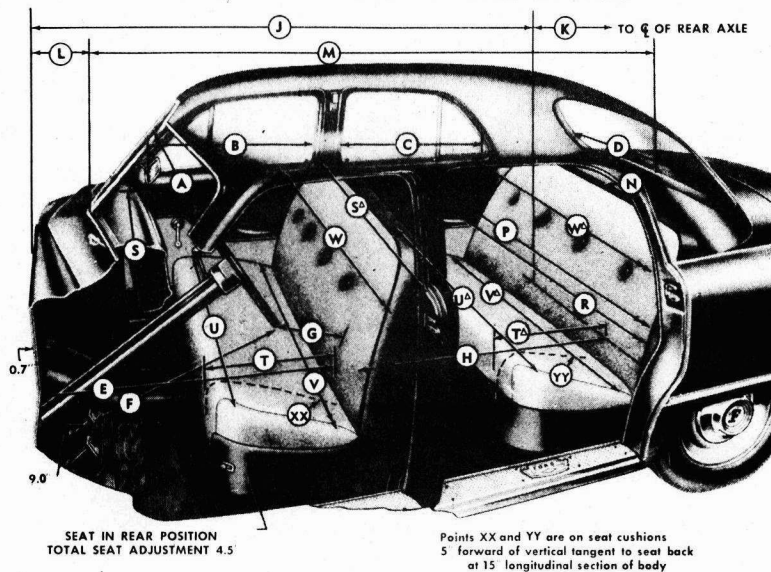
ALL MODELS (page G-5)

Exterior Width Dimensions - mm

Item	Fordor Sedan	Station Wagon	All Others
A	1821	1940	1821
B	1851	1940	1851
C	1422	1422	1422
D	1422	1524	1422
E	1761	1761	1761
F	1763	1880	1763
G	1034	1290	1184
H	897	-	-
J	3556	4089	3835
K	3302	-	-
L	795	999	922
	762	934	877
M	673	-	-
	655	-	-

SEDANS and CLUB COUPE

(Illustration for location of dimension lines only.)



INTERIOR BODY DIMENSIONS

Printed in U.S.A.

9/20/50

SEDANS and CLUB COUPE

Horizontal Interior Body Dimensions—inches

ITEM	DESCRIPTION	TUDOR SEDAN		FORDOR SEDAN		CLUB COUPE	
A	Width, windshield (projected width)	53.1		53.1		53.1	
B	Width, front door window	35.3		29.0		35.3	
C	Width, rear quarter or rear door window	31.5		29.0		22.0	
D	Width, back window (projected width)	43.5		43.5		43.5	
E	Dash to front seat back* (min./max.)	39.0/43.5		39.0/43.5		39.0/43.5	
F	Clearance, pedals to bottom of steering wheel	24.3		24.3		24.3	
G	Clearance arc, steering wheel to seat back (min./max.)	8.7/13.2		8.7/13.2		8.7/13.2	
H	Back of front seat to rear seat back* (min./max.)	31.8/36.3		31.8/36.3		26.0/30.5	
J	Dash to rear seat back†	82.2		82.2		75.6	
K	Rear seat back to centerline of rear axle†	16.2		16.2		22.8	
L	Cowl depth at center of windshield†	9.3		9.3		9.3	
M	Windshield to back window†	100.5		100.5		89.4	
N	Package tray depth†	12.8		12.8		10.4	
P	Body width at top of rear seat arm rests	58.5		59.0		59.8	
R	Body width between rear seat arm rests	52.8		53.3		53.8	
		Front	Rear	Front	Rear	Front	Rear
S & S ^A	Width between body pillars	56.0	57.0	56.0	57.5	56.0	57.0
T & T ^A	Seat cushion depth*	18.8	18.6	18.8	18.6	18.8	16.6
U & U ^A	Seat cushion width (maximum)	57.5	60.9	57.5	60.3	57.5	60.5
V & V ^A	Hip room, top of seat cushion, 5" ahead of seat back	61.7	60.3	61.7	60.3	61.7	61.0
W & W ^A	Shoulder room, 5" ahead of seat back	57.2	55.4	57.2	55.4	57.2	55.5

*Measured 15" from longitudinal centerline of car.

†Measured at longitudinal centerline of car.

G-7

INTERIOR BODY DIMENSIONS

SEDANS and CLUB COUPE (page G-7)

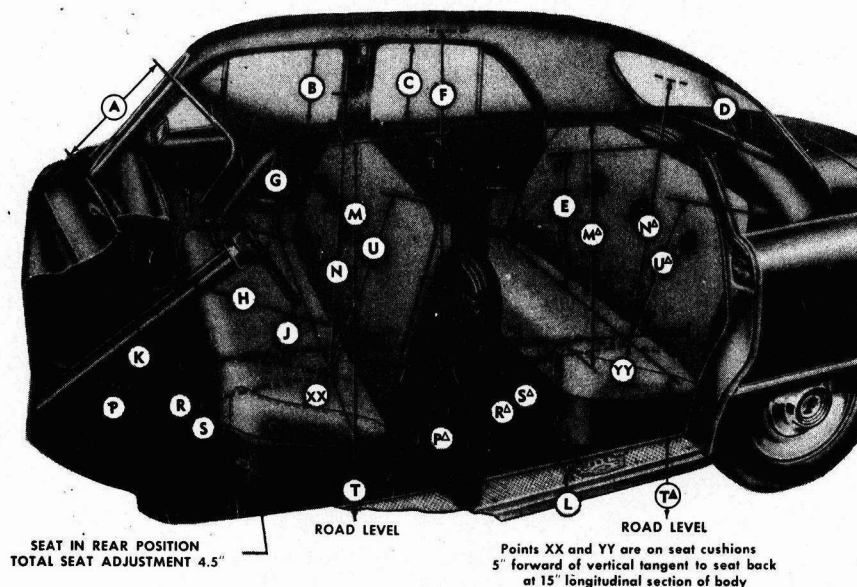
Horizontal Interior Body Dimensions - mm

Item	Tudor Sedan		Fordor Sedan		Club Coupe	
A	1349		1349		1349	
B	897		737		897	
C	800		737		559	
D	1105		1105		1105	
E	991/1105		991/1105		991/1105	
F	617		617		617	
G	221/335		221/335		221/335	
H	808/922		808/922		660/775	
J	2088		2088		1920	
K	412		412		579	
L	236		236		236	
M	2553		2553		2271	
N	325		325		264	
P	1486		1499		1519	
R	1341		1354		1367	
	Front	Rear	Front	Rear	Front	Rear
S	1422	1448	1422	1461	1422	1448
T	478	472	478	472	478	472
U	1461	1547	1461	1532	1461	1537
V	1567	1532	1567	1532	1567	1549
W	1453	1407	1453	1407	1453	1410

381 mm

SEDANS and CLUB COUPE

(Illustration for location of dimension lines only.)



SEDANS and CLUB COUPE

Vertical Interior Body Dimensions—Inches

ITEM	DESCRIPTION	SEDANS		CLUB COUPE	
A	Height, windshield at center*	15.6		15.6	
B	Height, front door window*	13.8		13.8	
C	Height, rear quarter (or rear door) window*	13.4 (13.8)		12.4	
D	Height, back window*	15.8		15.8	
E	Height, bottom of back window above YY point†	19.7		21.7	
F	Height, floor to roof (maximum)	47.2		47.2	
G	Height, bottom of front door window above XX point	16.8		16.6	
H	Clearance, instrument panel to front seat back‡ (min./max.)	24.5/29.0		24.5/29.0	
J	Clearance arc, steering wheel to seat cushion (min./max.)	5.6/5.8		5.6/5.8	
K	Floor to bottom of instrument panel‡	20.6		20.6	
L	Height, top of tunnel above scuff plate	3.8		3.8	
M	Entrance head room: cushion XX point to front door windcord	30.2		30.2	
M ^a	cushion crown to windcord at center of rear door	27.9		—	
		Front	Rear	Front	Rear
N & N ^a	Head room measured 8° off vertical at XX or YY point	36.2	35.1	36.2	35.5
P & P ^a	Leg room‡ (min./max.)	38.0/42.5	40.7/45.2	38.0/42.5	34.0/38.5
R & R ^a	Floor to top of seat cushion crown‡	13.4	13.2	13.4	11.5
S & S ^a	Floor to seat cushion at XX or YY point	11.0	10.5	11.0	9.2
T & T ^a	Ground to top of seat cushion at XX or YY point	25.8	25.2	25.8	23.9
U & U ^a	Height, seat back, parallel to seat back‡	21.6	23.6	21.6	23.5

*Measured parallel to glass.

†Measured at centerline of car.

‡Measured 15° from longitudinal centerline of car.

SEDANS and CLUB COUPE (page G-9)

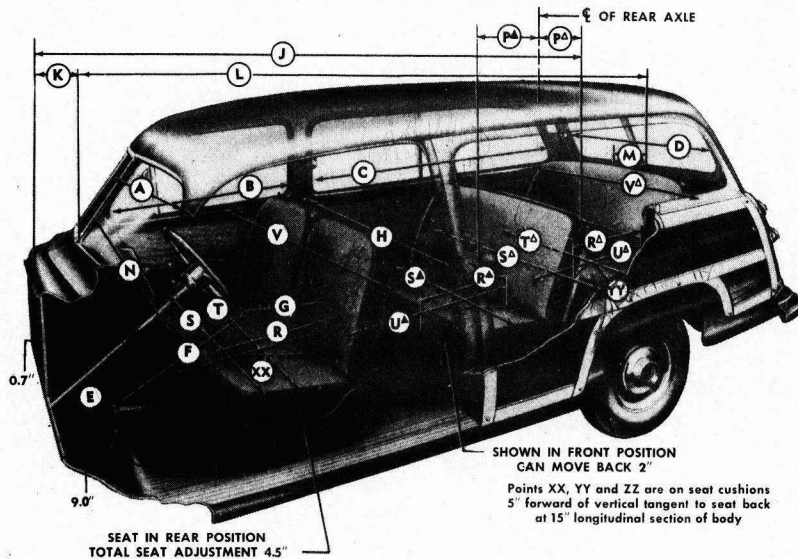
Ventical Interior Body Dimensions - mm

Item	Sedans		Club Coupe	
A	396		396	
B	351		351	
C	340 (351)		315	
D	401		401	
E	500		551	
F	1194		1194	
G	427		422	
H	622/737		622/737	
J	142/147		142/147	
K	523		523	
L	97		97	
M	767		767	
	709		-	
	Front	Rear	Front	Rear
N	920	892	920	902
P	965/1080	1034/1148	965/1080	864/978
R	340	335	340	292
S	279	267	279	234
T	655	640	655	607
U	549	599	549	597

381 mm

STATION WAGON

(Illustration for location of dimension lines only.)



INTERIOR BODY DIMENSIONS

Printed in U.S.A.

9/20/50

STATION WAGON

Horizontal Interior Body Dimensions—inches

ITEM	DESCRIPTION	DIMENSION		
A	Width, windshield (projected width)	51.3		
B	Width, front door window	39.6		
C	Width, total side-rear window	61.0		
D	Width, back windows (projected width)	47.1		
E	Dash to front seat back* (min./max.)	39.0/43.5		
F	Clearance, pedals to bottom of steering wheel	24.3		
G	Clearance arc, steering wheel to seat back (min./max.)	8.7/13.2		
H	Body width between center pillars	58.3		
J	Dash to rear seat back†	111.3		
K	Cowl depth at center of windshield†	11.5		
L	Windshield to back window†	120.1		
M	Top rear edge of rear seat back to back window†	10.6		
N	Body width between door front pillars	52.0		
		Front	Middle	Rear
P ^Δ & P ^Δ	Seat back to centerline of rear axle	—	23.5	12.9
R, R ^Δ & R ^Δ	Seat cushion depth*	18.8	15.6	15.9
S, S ^Δ & S ^Δ	Seat cushion width (maximum)	57.5	45.5	48.0
T & T ^Δ	Hip room, top of seat cushion, 5" ahead of seat back	61.1	—	49.0
U ^Δ & U ^Δ	Distance between rear seat seat backs*	—	26.4/30.9	27.0
V & V ^Δ	Shoulder room, 5" ahead of seat back	56.4	—	57.0

*Measured 15" from longitudinal centerline of vehicle.

†Measured at centerline of vehicle.

INTERIOR BODY DIMENSIONS

STATION WAGON (page G-19)

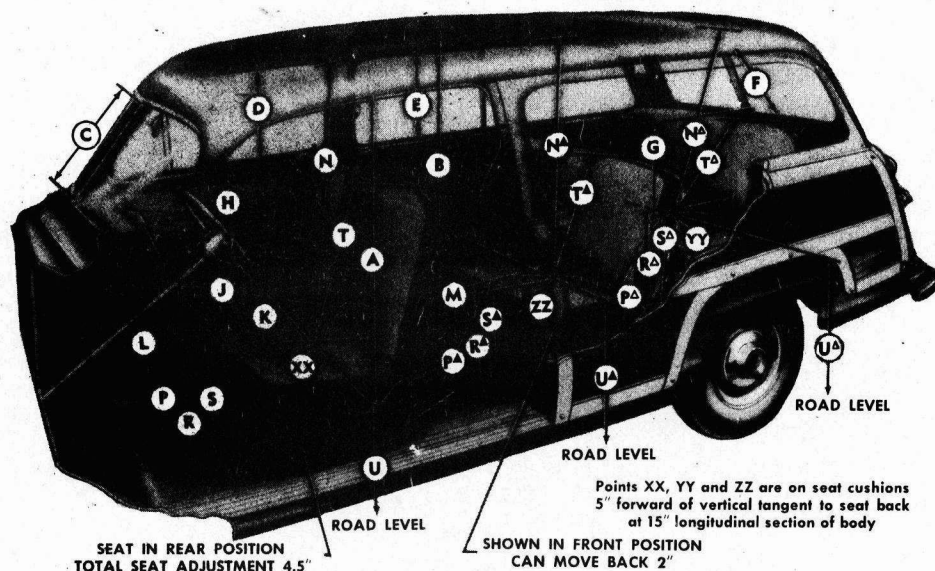
Horizontal Interior Body Dimensions - mm

Item	Dimension		
A	1303		
B	1006		
C	1549		
D	1196		
E	991/1105		
F	617		
G	221/335		
H	1481		
J	2827		
K	292		
L	3051		
M	269		
N	1321		
	Front	Middle	Rear
P	-	592	328
R	478	396	404
S	1461	1156	1219
T	1552	-	1245
U	-	671/785	686
V	1433	-	1448

381 mm

STATION WAGON

(Illustration for location of dimension lines only.)



INTERIOR BODY DIMENSIONS

STATION WAGON

Vertical Interior Body Dimensions—Inches

ITEM	DESCRIPTION	DIMENSION		
A	Entrance head room (cushion XX point to door windcord)	31.9		
B	Height, floor to roof (maximum)	51.7		
C	Height, windshield at center*	16.1		
D	Height, front door window*	14.8		
E	Height, side-rear window*	16.0		
F	Height, back window*	13.4		
G	Height, bottom of back window above YY point†	13.6		
H	Height, bottom of front door window above XX point	17.6		
J	Clearance, instrument panel to front seat back‡ (min./max.)	24.8/28.9		
K	Clearance arc, steering wheel to seat cushion (min./max.)	5.6/5.8		
L	Floor to bottom of instrument panel‡	23.1		
M	Height, top of tunnel above scuff plate	3.8		
		Front	Middle	Rear
N, N ^A & N ^A	Head room measured 8° off vertical at XX, ZZ or YY point	39.5	38.8	34.0
P, P ^A & P ^A	Leg room‡ (min./max.)	38.3/42.8	36.8/41.3	38.5
R, R ^A & R ^A	Floor to top of seat cushion crown‡	13.4	14.3	13.5
S, S ^A & S ^A	Floor to seat cushion at XX, ZZ or YY point	11.0	12.5	11.6
T, T ^A & T ^A	Height, seat back, parallel to seat back‡	21.6	17.3	16.1
U, U ^A & U ^A	Ground to top of seat cushion at XX, ZZ or YY point	26.8	28.8	32.4

*Measured parallel to glass.

†Measured at centerline of vehicle.

‡Measured 15° from longitudinal centerline of vehicle.

INTERIOR BODY DIMENSIONS

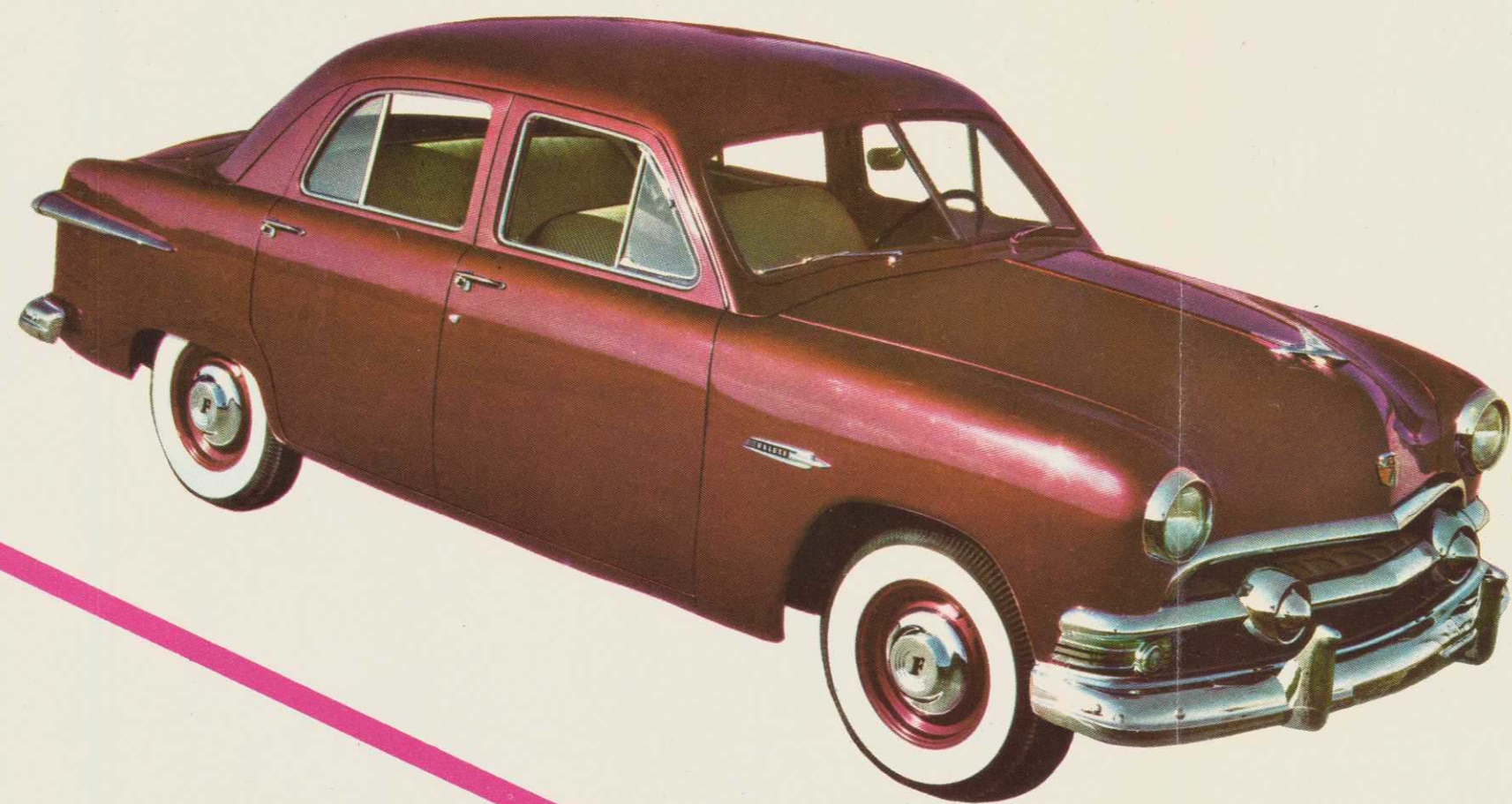
STATION WAGON (page G-21)

Vertical Interior Body Dimensions - mm

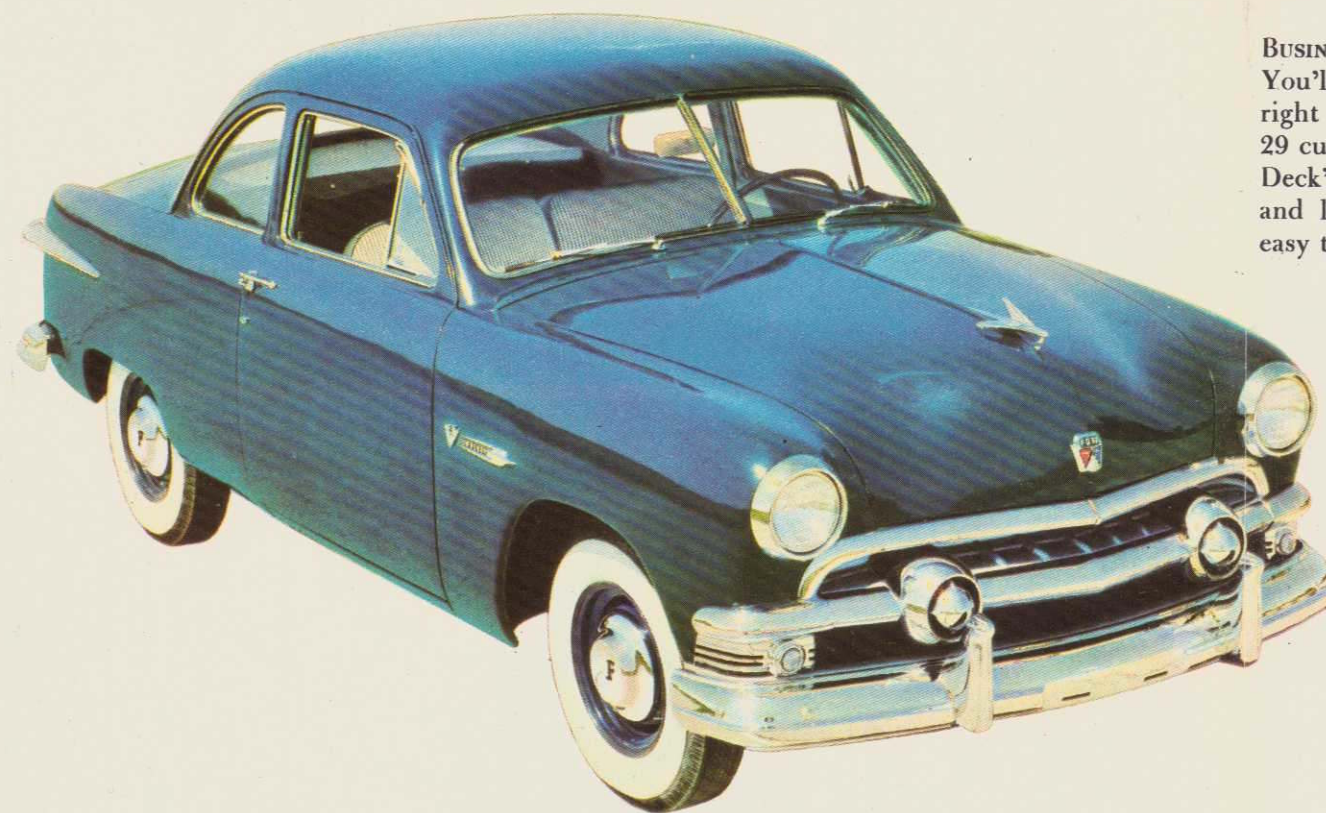
Item	Dimension		
A	810		
B	1313		
C	409		
D	376		
E	406		
F	340		
G	345		
H	447		
J	630/734		
K	142/147		
L	592		
M	97		
	Front	Middle	Rear
N	1003	986	864
P	973/1087	935/1049	978
R	340	363	343
S	279	318	295
T	549	439	409
U	681	732	823

381 mm

Deluxe Fordor Sedan

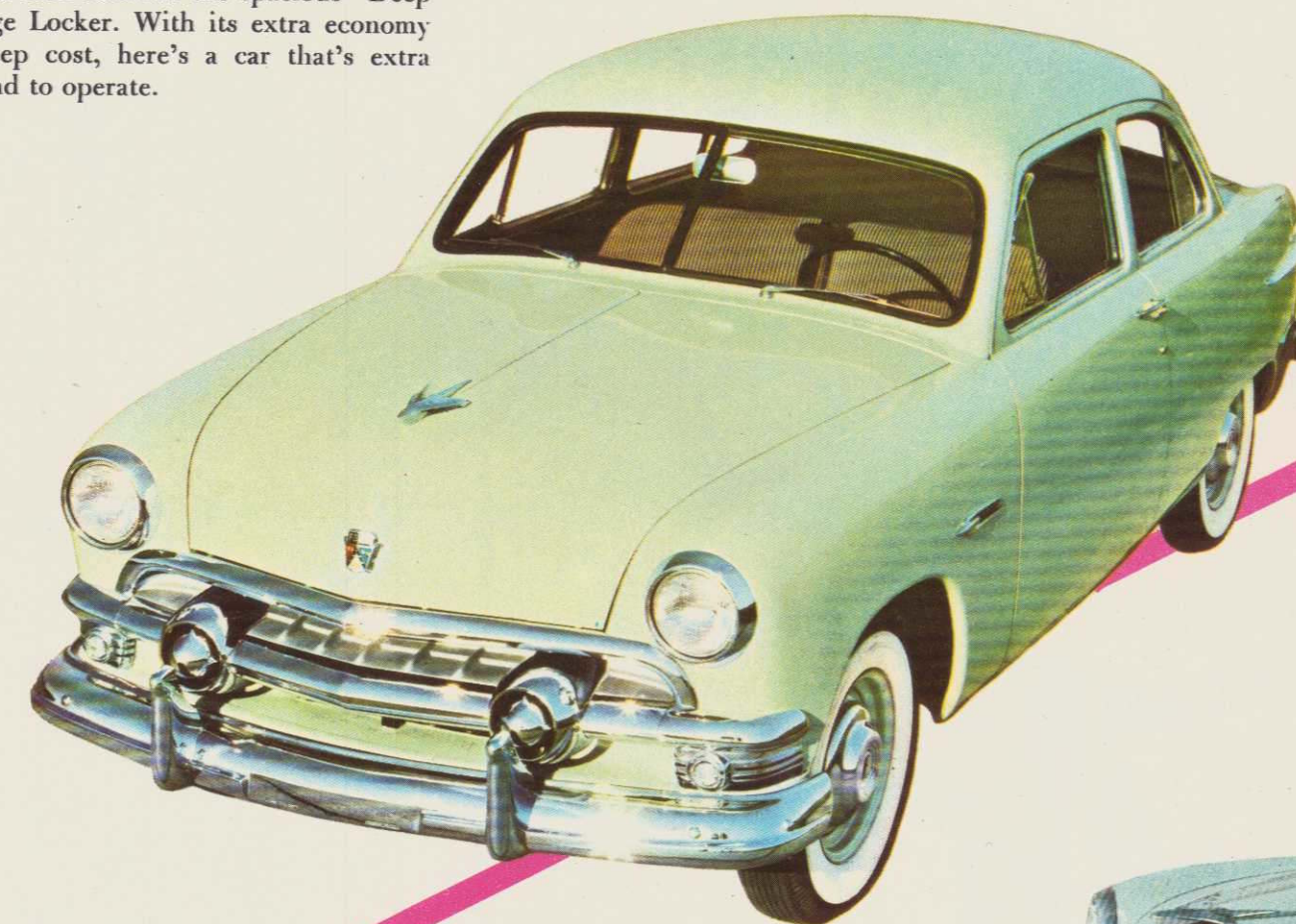


Deluxe Business Coupe



BUSINESS IS PLEASURE in this fine new '51 Ford. You'll find roomy, easy-to-get-at storage space right behind the front seat and also more than 29 cubic feet of load room in the spacious "Deep Deck" Luggage Locker. With its extra economy and low upkeep cost, here's a car that's extra easy to own and to operate.

Deluxe Tudor Sedan

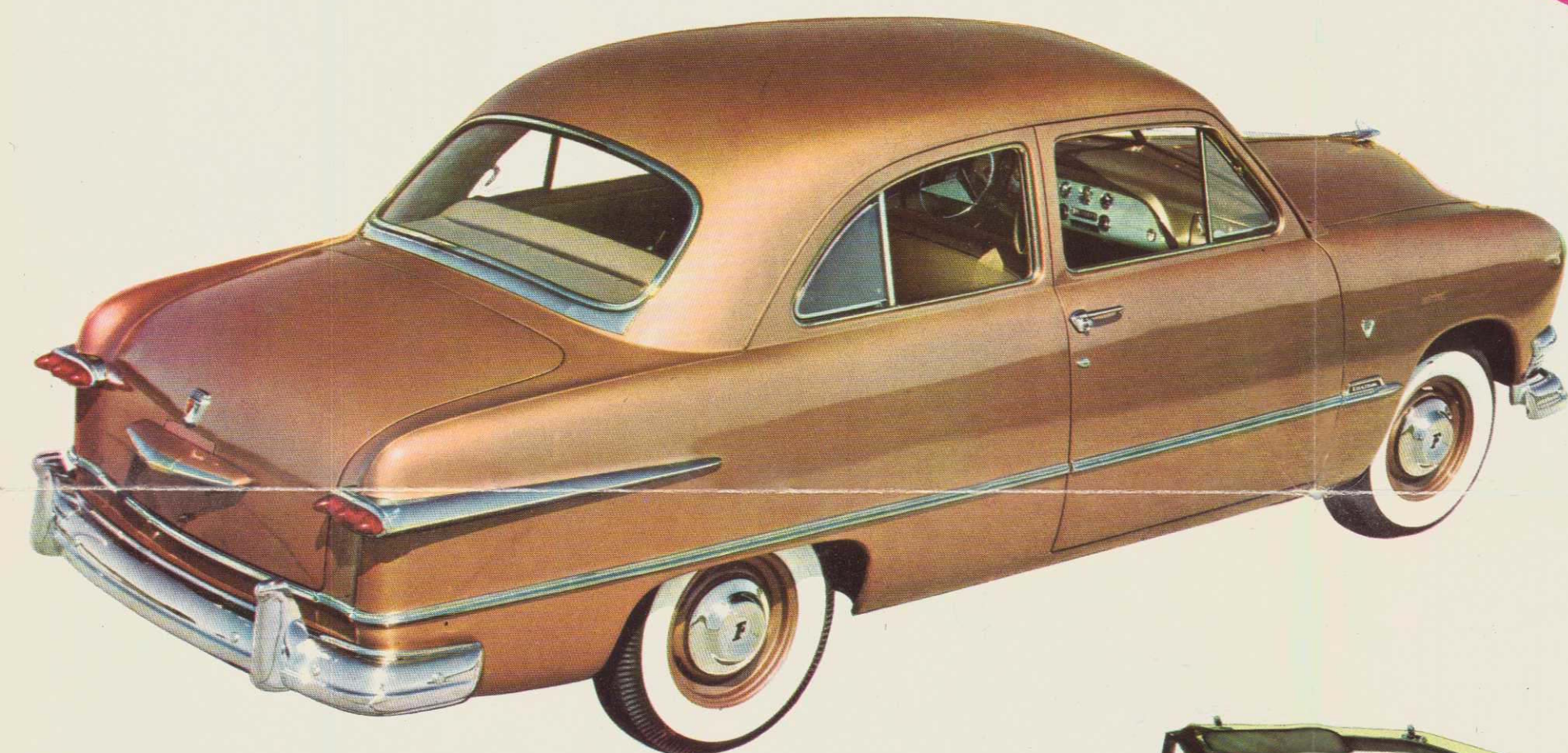


DELUXE

Ford's Deluxe line includes six models in three popular body styles—Tudor Sedan, Fordor Sedan, and Business Coupe. Each body style is available in both V-8 and Six models. Deluxe models may be had in any of six bright new body colors and for their new "Luxury Lounge" Interiors there's a choice of Craftweave or Craftloom genuine Fordcraft upholstery materials "Color-Keyed" to blend with any exterior body color.

Custom Tudor Sedan

SIX PEOPLE BIG and safe for the little folks is this beautiful Ford Tudor! It's the body style long a favorite as the all-around family car—now with more comfort, style and value than ever!



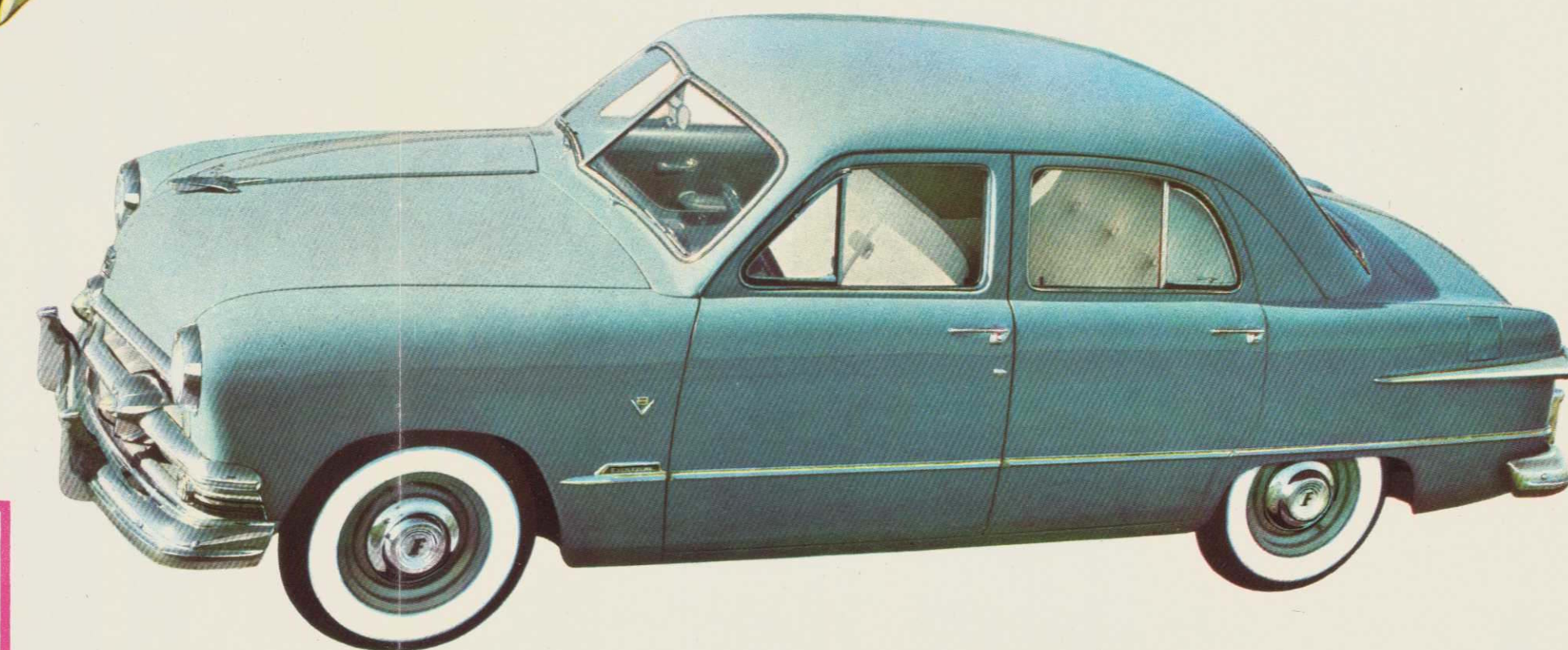
CUSTOM

Ford's Custom line sets new standards for luxurious beauty. In it are three enclosed body styles, Tudor Sedan, Fordor Sedan, and Club Coupe, available in V-8 or Six models, and a Convertible in V-8 only. Enclosed models may be had in any of ten beautiful body colors, Convertible in twelve. "Luxury Lounge" Interiors are finished in exclusive "Color-Keyed" Fordcraft materials—Craftweave, Craftloom or Craftcord—to harmonize with new exterior body colors. Eight interior trim schemes are available for the Convertible, four for the enclosed models.

LUXURY IN EVERY LINE

Custom Fordor Sedan

THE FORDOR SEDAN, like the other '51 models, brings you "Fashion Car" Styling, along with gas savings and dozens of other outstanding features you've been looking for.

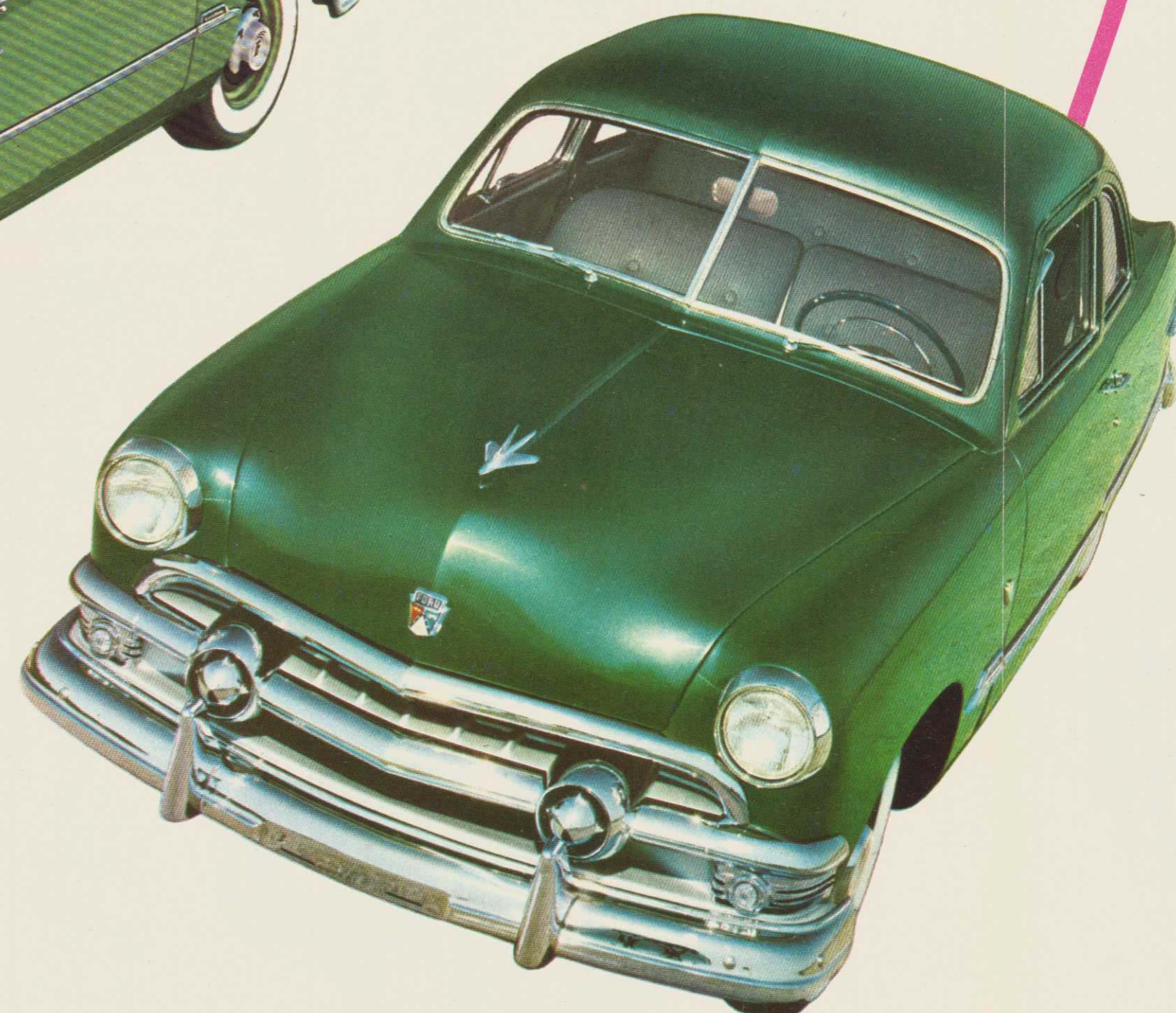


Custom Convertible

IF THERE'S A TOUCH of gypsy in your soul . . . if you like the sun and the wind and the open road . . . you'll surely thrill to this sleek, shining Convertible with specially upholstered "Luxury Lounge" Interior. A slight touch of the finger, and the snug top goes up or down automatically. A slight touch of the foot, and you're sailing off to faraway places behind Ford's smooth, easy power.

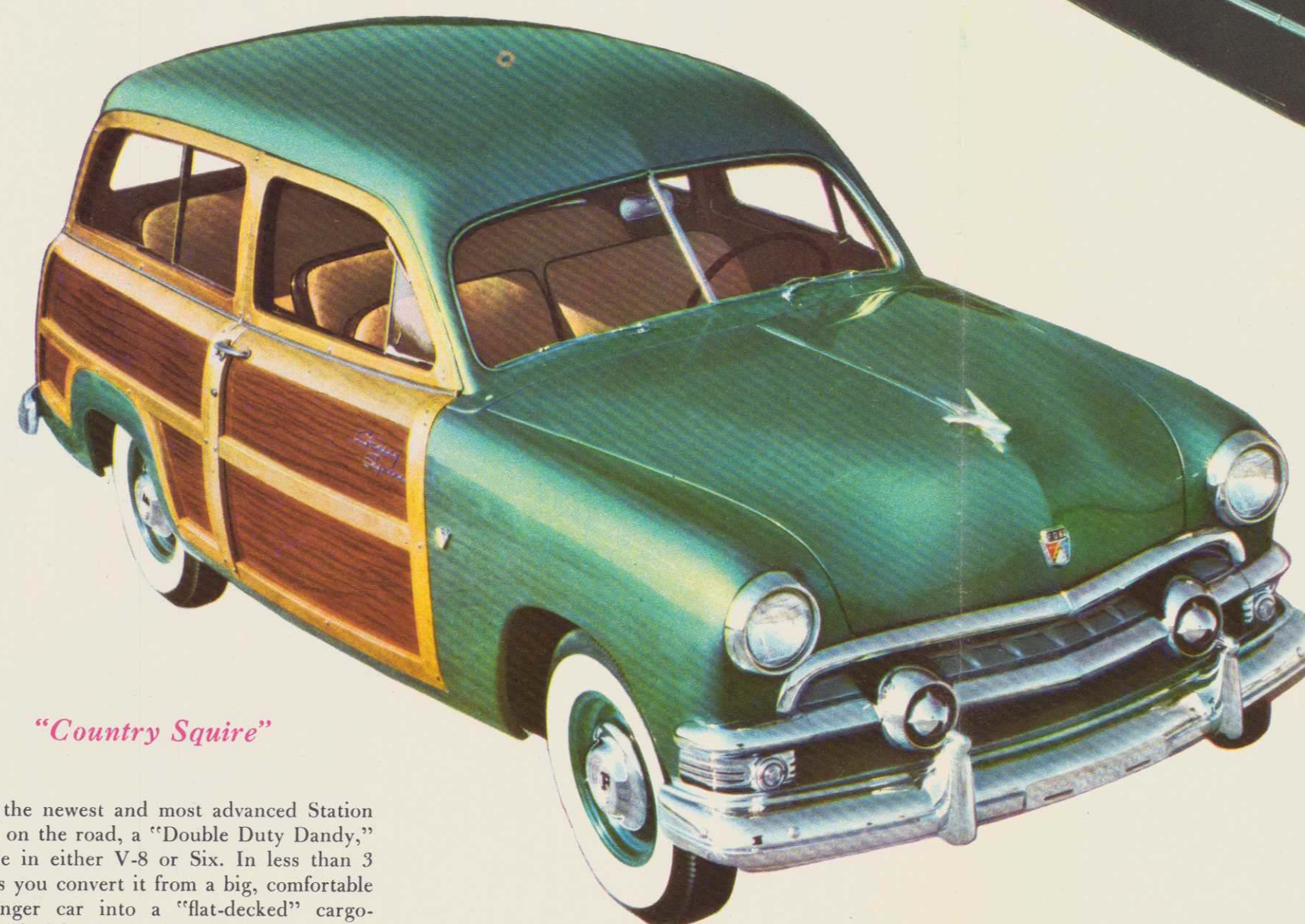
Custom Club Coupe

"WHY PAY MORE for style, quality or quiet?" you'll ask when you "Test Drive" this "strictly personal," Ford Club Coupe, with seating for six. There's grace in every line . . . and an extra large "Deep Deck" Luggage Locker that will serve the whole family . . . with room to spare!



"Country Squire"

Here's the newest and most advanced Station Wagon on the road, a "Double Duty Dandy," available in either V-8 or Six. In less than 3 minutes you convert it from a big, comfortable 8-passenger car into a "flat-decked" cargo-carrier. Ideal for Playloads or Payloads.



Crestliner

Lovely to look at . . . a delight to own . . . and thrilling to drive, is the dashing new Ford Crestliner V-8. It offers you the smart good looks of a convertible plus the closed comfort of a sedan. It's a "Ford First" in distinctive styling.

