

GENERAL  
MOTORS  
QUALITY.  
SAFETY.  
VALUE.  
1992



MARK OF EXCELLENCE

PUTTING QUALITY  
ON THE ROAD

©1991 General Motors Corporation.  
All rights reserved.



**T**his is a prototype for GM's electric car, called "Impact." The virtually zero-emissions electric car is just one example of the innovative approaches GM is taking to meet the challenges of the 1990s.

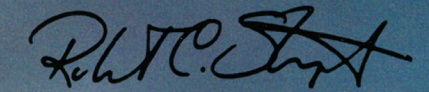
The electric car is in the future. In the pages of this brochure, you'll see some of the great new GM cars and trucks for 1992, vehicles that are available today. Nine GM cars—the Pontiac Grand Am and Bonneville;

Oldsmobile Achieva and Eighty Eight; Buick Skylark, LeSabre, and Roadmaster; and the Cadillac Eldorado and Seville—and six trucks—the Chevrolet Blazer and GMC Yukon, as well as Suburbans and crew cab models from both divisions—are "all new" for 1992.

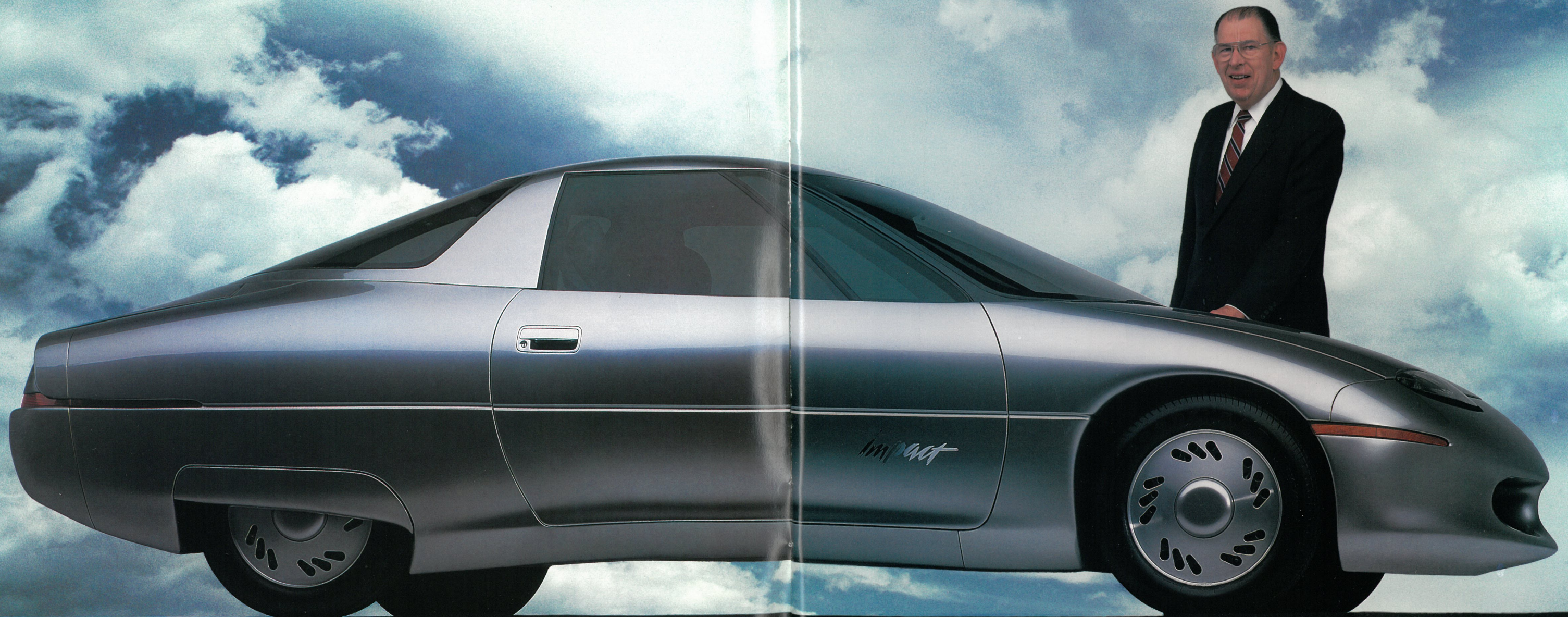
We're proud of these new vehicles and all the cars and trucks we sell at GM. Among the many outstanding

features on these vehicles, we're particularly proud of our accomplishments in safety technology. At GM, we believe that safety isn't one thing, it's everything. Safety features on GM vehicles not only help protect you in case of a crash, they help avoid that crash. We're proud to have pioneered the development and use of such safety features as energy-absorbing steering columns and instrument panels, side-guard door beams, air bags, high-penetration-resistant windshields, and more.

This brochure can only tell you part of the story on today's high-quality and high-value GM products. That's why I invite everyone to test-drive the 1992 Chevrolet, Pontiac, Oldsmobile, Buick, Cadillac, GMC Truck, and Saturn vehicles. GM is a leader in quality, safety, fuel economy and value in 1992.



Robert C. Stempel  
Chairman  
General Motors  
October, 1991





## CORVETTE

Chevrolet Corvette® is the sports car most Americans have fantasized about owning. In 1992 a lucky few will realize the dream. And appropriately, Corvette is the official car of America®, a designed-in-the-USA, advanced-technology competitor for The America's Cup.



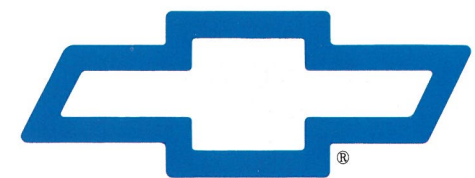
In an ever changing world, it's nice to know there are some things you can depend on, year after year. Like Chevrolet.®

Count on Chevy® to offer you proven engineering, plus more choices, from sporty convertibles to spacious minivans, than any other automaker.

Count on Chevy, too, for value. This year Chevrolet brings an important safety feature—four-wheel anti-lock brakes (ABS)—to more car lines than any other manufacturer. ABS is standard even in the lowest-priced 1992 Cavalier.

In every '92 Chevrolet, you'll discover high levels of quality and dependability, and the good feeling that Chevrolet delivers more than expected. We invite you to test-drive a new Chevy soon and see why The Heartbeat of America Is Winning new friends every day.

For more Chevrolet car or Chevrolet truck product information, call toll-free 1-800-222-1020.



THE HEARTBEAT OF AMERICA  
IS WINNING.™





Caprice Classic Sedan

## CAPRICE

In its first year, the new-generation 1991 Caprice® Classic LTZ garnered Motor Trend Magazine's prestigious "Car of the Year" award, and terrific reviews from car buyers. For '92 Caprice is the uncompromised six-passenger Chevrolet with standard 5.0 Liter V8 power, rear-wheel drive, full-frame construction, four-wheel anti-lock brake system (ABS) and a beautifully smooth ride.



Lumina Euro Sedan

## LUMINA SEDAN

Lumina® Sedan is the six-passenger car that will reward your family with advanced technology, more-than-expected performance, and designed-in durability. Lumina Euro Sedan adds a sporty attitude, with a Multi-Port Fuel-Injected 3.1 Liter V6 and sport suspension.



Lumina Z34 Coupe

## LUMINA COUPE

A luxury-sport coupe with the room and comfort of a mid-size car. The technology includes power rack-and-pinion steering, power four-wheel disc brakes and a four-wheel independent suspension. Enthusiasts will be paying closest attention to Lumina Z34®. At the heart of this performer: a 3.4 Liter Twin Dual Cam V6 with four overhead cams and four valves per cylinder.



Lumina APV CL

## LUMINA APV

Many people consider Lumina® APV to be the future of family transportation. Lumina APV accommodates up to seven passengers with optional modular seating. "Modular" means each lightweight seat is easily removable. New features for 1992 include a standard four-wheel anti-lock brake system (ABS) and a new optional 3.8 Liter 3800 V6/4-speed automatic transmission.



## CORSICA LT

Corsica® LT is the sport sedan for you—and a spacious, dependable 5-passenger sedan for your family. For 1992, Corsica has also been tuned to provide an exceptionally smooth, quiet ride. Standard safety features include a four-wheel anti-lock brake system (ABS), a driver-side air bag, lap/shoulder safety belts for all outboard seating positions, and energy-absorbing safety cage construction.



Corsica LT Sedan

## BERETTA

The 1992 Beretta is more than a sporty driving machine. This is also one of the roomiest coupes in its price range, with generous seating for five people. Standard safety features include a four-wheel anti-lock brake system (ABS) and a driver-side air bag.



Beretta GTZ Coupe

## CAVALIER

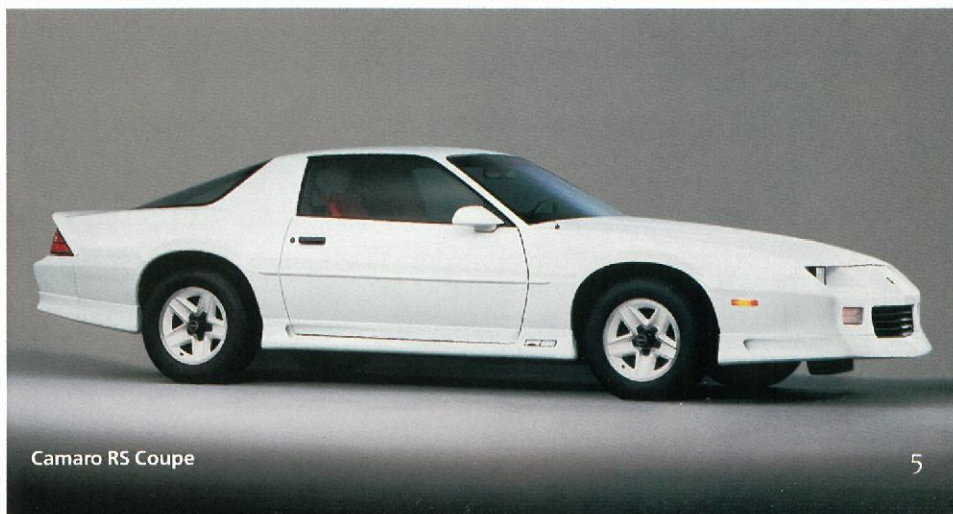
Your first new car has to be affordable, reliable...and great in every way. No wonder Cavalier® is America's most popular first new car. A 2.2 Liter 4-cylinder engine with new Multi-Port Fuel Injection delivers 110 smooth horsepower, and a new standard four-wheel anti-lock brake system (ABS) provides an extra measure of safety.



Cavalier Z24 Convertible

## CAMARO

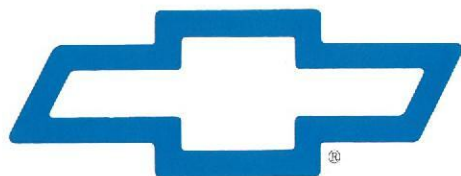
Twenty-five years ago the first Camaro® rolled off a Chevrolet assembly line...and an American love affair began. Camaro for 1992 continues the tradition. Standard features in Camaro RS Coupe include a 3.1 Liter V6, PASS-Key® theft-deterrent system, and driver-side air bag. All 1992 Camaros can be ordered with an optional 25th Anniversary Heritage Appearance Package.



Camaro RS Coupe



Chevrolet. The trucks you can depend on. The trucks that last.



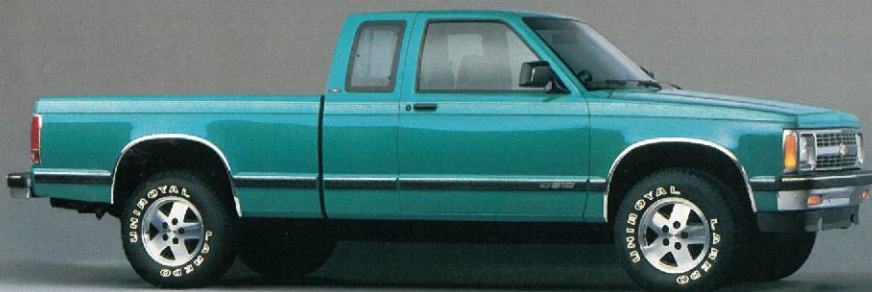
***The Heartbeat Of America Is Winning.™***



S-10 Tahoe LT 4x4 Blazer

### **S-10 BLAZER**

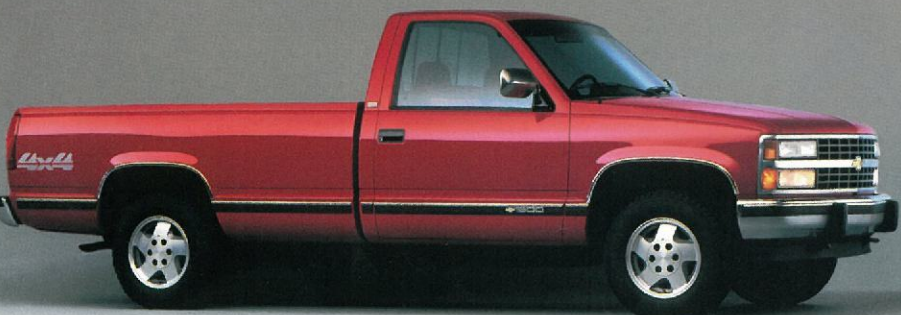
You can get America's #1 sport utility with two or four doors, with 2WD or the patented Insta-Trac® 4x4 system—shift in and out of 4WD without stopping or backing up. The versatile S-10 Blazer® with standard four-wheel ABS hauls like a wagon, tows like a truck, and provides a smooth ride.



S-10 Tahoe 4x4 Maxi-Cab Pickup

### **S-10 PICKUP**

Choose your personal pickup from the S-10® family. Pick the S-10 Regular-Cab Short Box or Long Box, or an S-10 Maxi-Cab Short Box—all available as either 2WD or 4x4 Insta-Trac® models. Maxi-Cab models offer you additional storage space in the cab, or optional folding rear jump seats.



K1500 4x4 Silverado Pickup

### **FULL-SIZE PICKUP**

America's #1 pickup—the C/K Full-Size Pickup. Selections include: ½-ton, ¾-ton, and 1-ton series; 2WD or 4x4; Regular-Cab or Extended-Cab; your choice of three trim levels; and specialty trucks like the W/T 1500 Work Truck, the Sport Trucks, and the formidable 454 SS.



## SUBURBAN

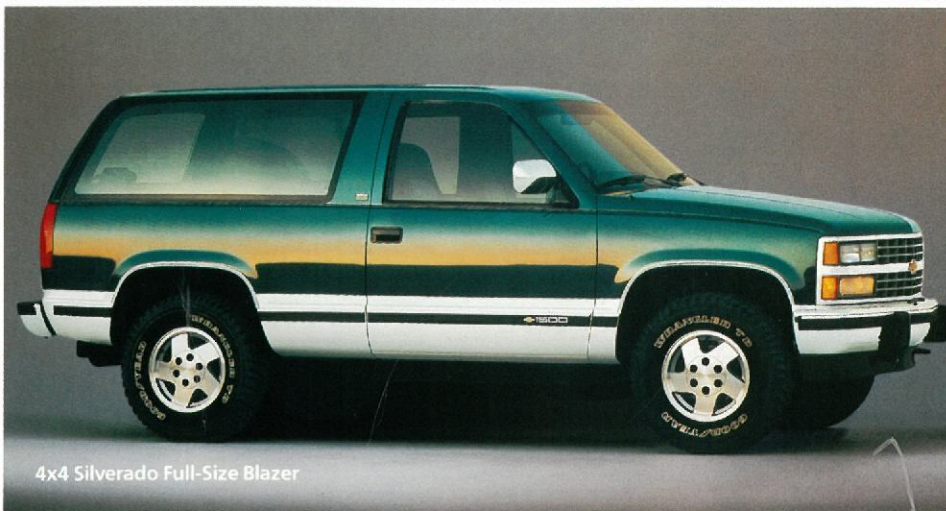
All new for 1992, here's a full-size, truck-based station wagon that's perfect for personal use. Choose 2WD or 4x4, gasoline V8 power. Chevy Suburban® carries up to nine people with available seating. And, when properly equipped, it will out-tow every other car-type wagon on the highway.



C1500 Silverado Suburban

## FULL-SIZE BLAZER

All new for 1992, America's original full-size sport utility is a highly civilized escape machine. Full-Size Blazer® combines standard four-wheel drive and a 5.7-liter V8 with eye-catching styling and solid comfort for six with optional seating.



4x4 Silverado Full-Size Blazer

## ASTRO

The mid-size Astro® tows, hauls cargo or moves people with equal ease. Powered by a 4.3-liter Vortec V6, Astro offers optional seating for up to eight, and it can be equipped for trailers up to 6,000 lbs. (including passengers, cargo, equipment, and trailer). Choices include 2WD, All-Wheel-Drive, regular body, or extended body.



All-Wheel-Drive Extended CL Astro Van

## SPORTVAN

Sportvan® comes in 110", 125" or 146" wheelbases, and a choice of gasoline or diesel engines. The Extended-Body G30 Series Sportvan is Chevy's premier passenger vehicle, with available seating for up to 15. The rear seats are easily removed to create 306 cu. ft. of cargo space.



Beauville Sportvan



# GEO



Geo Metro LSi Convertible

**L**ast year more than 250,000 Americans got to know Geo.<sup>®</sup> This year, we invite you to do the same. Geo is a family of four vehicles: Storm, Prizm, Metro and Tracker. Each one is fun to run and easy to own, and each one has its own unique personality. Geo also gives you the excel-

lent GM Bumper to Bumper Plus Warranty\* and the security of the Chevrolet dealer network—the largest dealer network in the United States. As you get to know Geo for 1992, we are confident you'll find a Geo that ideally suits you.

For more Geo product information, call toll-free 1-800-222-1020.

\*See your dealer for terms of this limited warranty.



## GEO STORM

Geo Storm<sup>®</sup> is the high-energy sport machine with a distinctive new look for 1992. The enthusiast-pleasing GSi Sport Coupe is powered by a new 1.8 Liter dual-overhead cam engine, and also includes special aluminum wheels and a wing-type rear spoiler. The highly affordable Sport Coupe and the roomy Hatchback Coupe are powered by a 1.6 Liter single-overhead cam engine. A driver-side air bag is standard on all models.



## GEO PRIZM

Geo Prizm<sup>™</sup> is the family sedan that continues to earn excellent reviews for its five-passenger spaciousness, advanced engineering and high level of overall quality. A 16-valve dual overhead cam engine provides responsive performance, and the four-wheel independent suspension contributes to a smooth, quiet ride.



## GEO METRO

Geo Metro<sup>™</sup> is the affordable, small car that's easy to park and maneuver—and fun to drive. Smooth performance is provided by a 3-cylinder, 1.0 Liter engine with Electronic Fuel Injection. Three body styles are available: a Hatchback Coupe, a Hatchback Sedan and a sporty Convertible.



## GEO TRACKER

Geo Tracker<sup>™</sup> can be a versatile 4x4 machine or an affordable two-wheel drive (2WD) runabout. Practical Hardtop or fun-loving Convertible body styles are available. In short, Geo Tracker is just the kind of vehicle you want it to be.



Geo Storm GSi



Geo Prizm LSi



Geo Metro LSi Coupe



Geo Tracker 2WD Convertible





Bonneville SE Sedan with Sport Package

**P**erformance has been a part of the Pontiac mission for so long, that you may not be aware that safety has always been an integral and indispensable part of our goal. Pontiac for 1992 is a perfect example. You'll find 4-wheel ABS as standard or available equipment on

Grand Am, Sunbird, Bonneville, Trans Sport and Grand Prix. Driver's-side air bags are standard in Firebird and Bonneville, with front passenger-side air bags standard on SSEi. Some Pontiacs also offer safety features such as child security locks and self-aligning steering wheels. It's all there to

help Pontiac owners stay safe by staying in control. For more Pontiac product information, call toll-free 1-800-762-4900 24 hours a day... because the Excitement never sleeps!



**PONTIAC**





Bonneville SE Sedan

## BONNEVILLE® SE

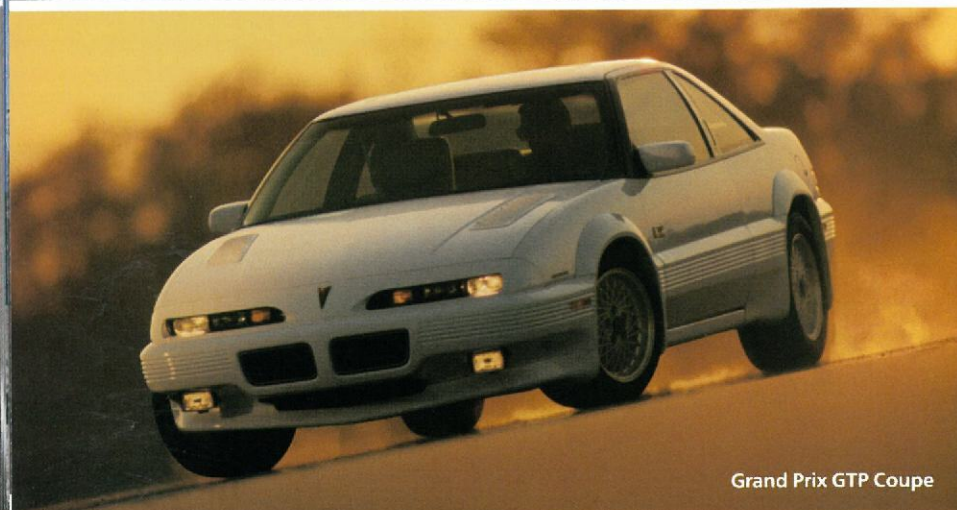
Make room for the boldest Bonneville since Pontiac invented them. It has an all-new design, a more powerful 3.8L V6 engine, driver's-side air bag, PASS Key II theft-deterrent system, 4-wheel independent suspension and available technology that some "Euro sedans" don't even offer.



Pontiac SSEi

## PONTIAC® SSEi

Pontiac's premier performance sedan is all-new for '92. A totally restyled body, containing a 3800 Supercharged V6 engine, anti-lock brakes, driver and front passenger air bags, full feature theft-deterrent system and Traction Control. They give the SSEi an appetite for the open road that just won't quit.



Grand Prix GTP Coupe

## GRAND PRIX™ GTP®

Pontiac's ultimate power coupe is a knockout with its street-tough style and its mighty 3.4L Twin Dual Cam V6 engine. Add a Getrag-licensed 5-speed gearbox, and you've got a one-two power-punch called Grand Prix GTP. It's a combination that's hard to beat.



Sunbird SE Coupe

## SUNBIRD® SE

At last a car that won't drain your pocket book for its power, performance and style. Introducing the '92 Pontiac Sunbird with an available 3.1L V6 engine, standard anti-lock brakes and a sporty shape that makes Sunbird's affordable Excitement simply irresistible.



## GRAND AM® SE COUPE

It's all new for '92. With a striking new exterior and interior, two new engines and standard anti-lock brakes on every model, the Grand Am SE Coupe is Pontiac's enthusiastic response to the question, "What have you done for me lately?"



## TRANS SPORT® GT

Most mini-vans end where the Pontiac Trans Sport GT begins. Space frame construction, rust-free composite body panels, removable modular seats, standard anti-lock brakes and a new 3800 V6 engine are just a few of the engineering advancements that make Trans Sport GT the Pontiac of mini-vans.



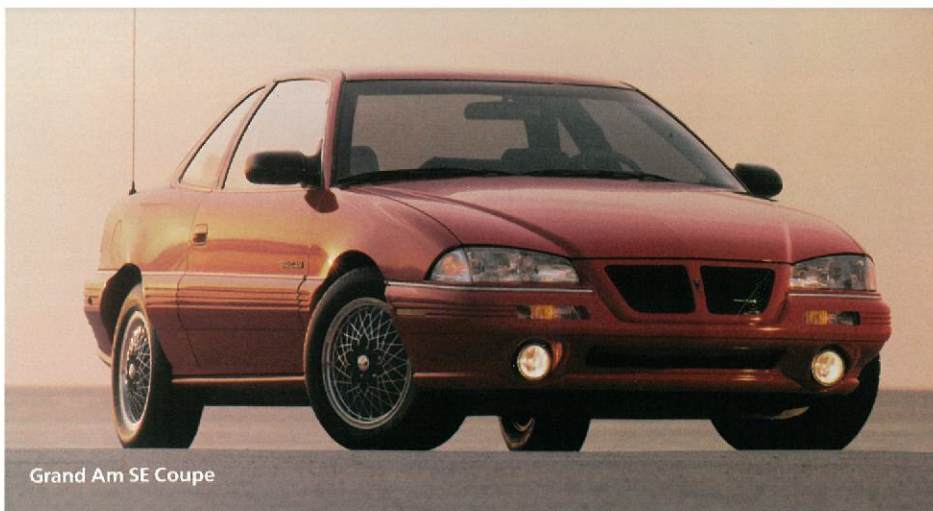
## FIREBIRD® TRANS AM

True to its heritage of legendary Pontiac performance, the '92 Firebird Trans Am offers a resounding 205 hp in the 5.0L V8. Aggressive styling and technologically advanced Rally-tuned suspension further prove that Firebird's "attitude" won't change.



## LeMANS SE AEROCOUPÉ

Count on the LeMans® SE Aerocoupe to offer a fresh perspective on Pontiac performance. Its low sticker price, combined with a distinctively aerodynamic shape, a monochromatic look, and a cargo area that's one of the largest in its class, give the LeMans SE Aerocoupe impressive value and Excitement.



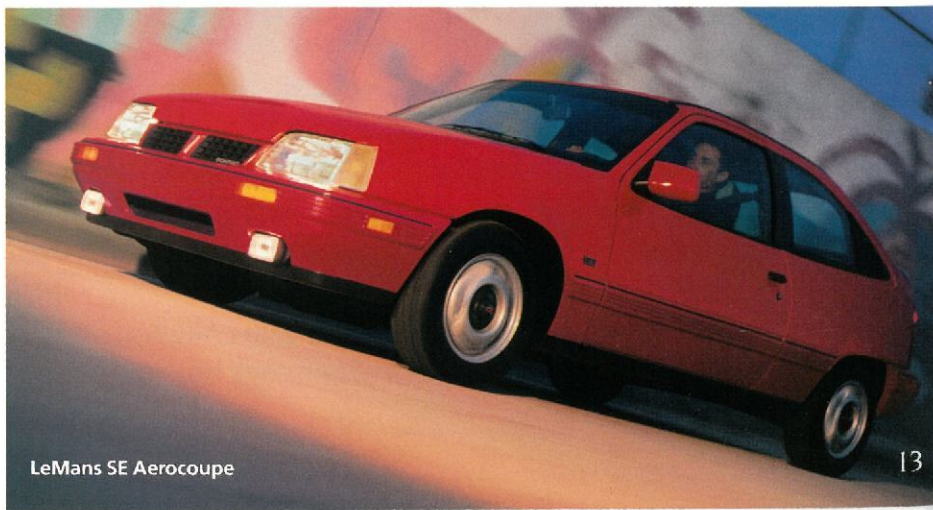
Grand Am SE Coupe



Trans Sport GT



Firebird Trans Am Convertible



LeMans SE Aerocoupe



## EIGHTY EIGHT® ROYALE

Combining advanced technology and traditional comforts, the all-new Eighty Eight Royale LS offers Advanced Traction Engineering™ which incorporates anti-lock braking, front-wheel drive and available traction control to enhance overall control of the road.



**T**he Power of Intelligent Engineering is more than simply engineering. It's meaningful engineering—engineering with a purpose. It begins with engines. Responsive engines. Fuel-efficient engines. And balanced engines that combine both of these qualities.

It's innovative technology combined with common sense. Like the added control of anti-lock braking

and the logic to make it standard on 15 different models and available on four others.

It's refinement with step-up features like a heating and cooling system designed for both front *and* rear seat passengers.

It's testing and proven endurance, and it's quality and the confidence to back every product with

the Oldsmobile Edge,™ the most comprehensive owner satisfaction program in the industry.

All of this is what makes a car an Oldsmobile. And it's inherent in Oldsmobile's full line of smart, contemporary vehicles. It's The Power of Intelligent Engineering. Call 1-800-242-OLDS for more information.

 **Oldsmobile**  
**THE POWER OF INTELLIGENT ENGINEERING™**





Ninety Eight Touring Sedan

## **NINETY EIGHT®**

The Ninety Eight Regency, Regency Elite and Touring Sedan combine all the qualities you'd expect from a luxury car with some you might not expect. Drive a Ninety Eight and you'll experience its most intelligent quality—the luxury of exceptionally quiet performance.



Toronado Troféo

## **TORONADO®**

Technology is exhilarating in the Toronado Troféo®, Oldsmobile's ultimate luxury, performance coupe. A tuned port, fuel-injected engine provides 170-horsepower performance, while power bucket seats infinitely adjust to create the personal luxury and comfort of a driver's car.



Cutlass Supreme International Series Sedan

## **CUTLASS SUPREME®**

The Cutlass Supreme International Series sedan. With features like the world's largest 24-valve V6 engine, independent four-wheel touring suspension, anti-lock brakes and individually-contoured bucket seats, this car has the technology to make every trip an inspired driving experience.



Cutlass Ciera SL Sedan

## **CUTLASS CIERA®**

Perhaps the most advanced engineering features a car can possess are durability and reliability. Its record of proven endurance is supported by the fact that 96% of all Cutlass Cieras ever sold are still on the road.



## ACHIEVA

With features like anti-lock brakes, available computer command ride and an advanced choice of engines, the all-new Achieva is designed with the intelligence of a much larger, and more expensive car. You can discover how a car can be both smart and fun when Achieva is introduced early in 1992.



Achieva Sport Coupe

## CUSTOM CRUISER®

Custom Cruiser is an eight-passenger luxury wagon designed to accommodate today's family. And with standard features like anti-lock brakes, a driver-side air bag and rear door child security locks, Custom Cruiser represents function at its finest.



Custom Cruiser

## SILHOUETTE®

With an available 3800 V6 engine, silky smooth electronic transmission and available leather seating areas, the Silhouette is no ordinary minivan. Engineered for space and style, its individual bucket seats allow for an endless array of seating arrangements. Silhouette is designed to fit your life-style comfortably.



Silhouette

## BRAVADA®

An icy road, an unexpected stop... and another typical situation handled by Bravada's combination of all-wheel drive and anti-lock brakes. Called SmartTrack™ this Oldsmobile sport utility system is engineered to instantly and automatically adjust to hazardous road conditions.

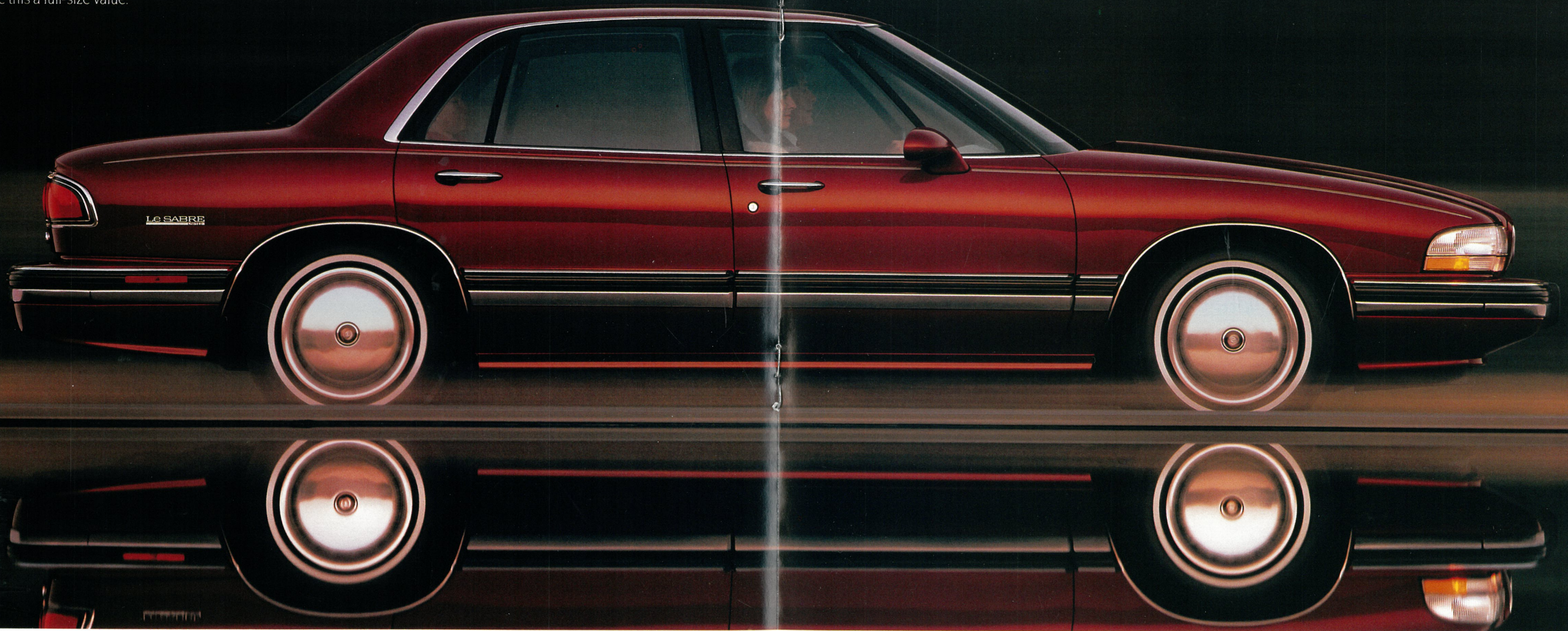


Bravada



## LeSABRE®

The all-new 1992 LeSabre offers elegant accommodations and a full measure of Buick Quality throughout. Advanced standard features like a sophisticated 3800 V-6 with tuned-port injection, driver-side air bag and options like anti-lock brakes combine with room for six to make this a full-size value.



**W**hy should I consider a new Buick? Many features separate Buick from other cars on the highways, but two words go a long way toward answering your question... Buick Quality.

It is in the design, and the engineering. It is found in the seamless flow of power, the seating material

and the road feel. It is evident in the clarity of information from gage to eye, the comfortable proximity of controls and the rich detail throughout.

The re-engineering of Buick over the last four years started with a quality mandate and a blank sheet of paper. Goals were not only achieved, but exceeded.

Buick Quality is deepset and lasting; it is the very essence and soul of Buick.

It is why, if you are looking at a Buick, you are looking at the best that Buick has to offer.

For all these reasons, and more, we invite you to consider a new Buick. The New Symbol for Quality in America.™

For more Buick product information, call toll-free 1-800-531-1115.



# BUICK®

The New Symbol For Quality  
In America.™





Park Avenue

## **PARK AVENUE®**

Refined and smooth, Park Avenue and Park Avenue Ultra are premium statements of expressive luxury and muscular elegance. Power is amply provided from the 3800 V-6 with tuned-port injection. And DynaRide provides for a smooth, comfortable ride. Count on Buick Quality in Park Avenue and Park Avenue Ultra.



Riviera

## **RIVIERA®**

From the beginning, Riviera has always stood apart from the crowd. A coupe with distinctive style, impressive capabilities and pure luxury, Riviera is a beautiful reason to take the long way home.



Roadmaster Sedan

## **ROADMASTER® SEDAN**

This classic name in premium Buicks is an unmistakably full-framed, rear-wheel-drive road sedan that offers a powerful 5.7-litre fuel-injected V-8, anti-lock brakes and driver-side air bag—standard. Roadmaster is perhaps the best value in an American luxury sedan.



Regal Sedan

## **REGAL® SEDAN**

Besides Regal Sedan's outstanding looks, are its standard 3.1-litre V-6, air conditioning and 4-wheel independent suspension, and a host of other standard and optional features.



## REGAL® COUPE

Behind the distinctive appearance, a 140-horsepower 3.1-litre V-6 with multi-port fuel injection balances power and ease of operation. Four-wheel independent DynaRide™ suspension (not available on Gran Sport) carries you along smoothly while 4-wheel disc brakes stop you confidently. Whether you choose Custom, Limited or Gran Sport, you're in for a Regal experience.



## SKYLARK®

The expressive, all-new Skylark (limited availability until late fall, 1991) takes Buick to a new level of style and flair. Available in Coupe and Sedan, Skylark's bold styling is backed up by Buick Quality and a long list of standard features including anti-lock brakes.



## CENTURY®

This longtime 6-passenger favorite is generous with room, handling, power and standard features. Combine all of this with Buick Quality and Century delivers superb value.



## ROADMASTER® ESTATE WAGON

The concept was ambitious: to combine the versatility of a wagon with the comfort, safety and style of a fine luxury car. The result is Roadmaster Estate Wagon. It's designed to carry many times the cargo of the average full-size sedan, in what may be the most luxurious wagon in the world.



Regal Ltd Coupe



Skylark GS Coupe



Century Ltd Sedan



Roadmaster Wagon





Seville STS

**S**ubstance takes shape, Cadillac Style. It started with a blank sheet of paper. It took shape through an entirely new process, integrating design, manufacturing, sales and engineering in a coordinated effort to satisfy the customer.

The result: two of the most advanced new luxury automobiles in Cadillac® history. The Cadillac Seville and the Cadillac Eldorado.

These new Cadillacs join a dynamic range of luxury automobiles which demonstrate how performance takes shape, Cadillac Style, with

computer-managed V8 powertrains, sophisticated anti-lock brakes and Speed-Sensitive Suspensions. In 1992, Cadillac offers the year-round confidence of Traction Control standard on more models than any other American automaker.

Cadillac is the only leading luxury car line to equip each of its cars with V8 power and anti-lock brakes. And Cadillac offers Traction Control standard on more models than any American manufacturer.

In 1992, Cadillac enhances the finest roadside service program—Cadillac Roadside Service®—with

new benefits and conveniences. Cadillac continues to offer on-the-spot assistance from more participating dealers than any other program for all Cadillac owners. And now, for the first 12 months/12,000 miles, you receive trip interruption protection and emergency road service, including free gasoline delivery.

This is how substance is taking shape, Cadillac Style.

Please call 1-800-333-4CAD for product literature and the location of your nearest Cadillac dealer.



**CADILLAC STYLE™**





Seville

## SEVILLE®

The challenge: design a vehicle that balances the spaciousness and comfort of a five-place luxury automobile with the road performance of a touring sedan. Introducing the new Cadillac Seville.



Seville STS

## SEVILLE STS™

It started with a blank sheet of paper. What resulted is a refined balance of seamless power, dynamic handling and vault-like solidity. The new Seville STS. Its computer-controlled Speed-Sensitive Suspension and Goodyear Eagle GA tires are specially engineered for the driving enthusiast.



Eldorado

## ELDORADO®

Take a formidable luxury coupe. Apply an impressive array of advanced technologies. And give it sophisticated comfort. The result is the new Cadillac Eldorado. Its electronically controlled engine and transmission transport you smoothly.



Eldorado Touring Coupe

## ELDORADO® TOURING COUPE

The American luxury sport coupe that brings back the joy of driving. Integrated systems of mechanics and electronics work in harmony. The handling dynamics of the Speed-Sensitive Suspension helps provide stability on the open road while enhancing the comfort of the ride in town.



## ALLANTÉ<sup>®</sup>

Allanté's high performance can be enjoyed year-round by virtue of advanced Traction Control and exclusive Bosch III anti-lock braking. Its Speed-Sensitive Suspension and steering adapt to changing driving speeds automatically. The Allanté Assurance Plan offers you one of the finest vehicle protection plans of any automobile sold in America: 7 years/100,000 miles. See your dealer for terms of this limited warranty.



## FLEETWOOD<sup>®</sup>

Six-passenger luxury has never been so sophisticated. From unmistakable design to innovative technologies that enhance your control and comfort. This year, Fleetwood adds the benefits of Traction Control to the versatility of Speed-Sensitive Suspension and the confidence of anti-lock braking.



## DE VILLE<sup>®</sup>

America's favorite Cadillac is the De Ville with its full-size luxury and contemporary technology. The Sedan de Ville has the largest interior of any front-drive sedan sold in America and an advanced electronic climate control system with rear compartment adjustment.



## BROUGHAM<sup>™</sup>

As America's longest regular production automobile, the Cadillac Brougham affords you uncompromising six-passenger luxury. Six-way power-adjusting front seats, electronic climate control, cruise control are all standard. Its responsive V8 engine moves you smoothly, balanced by standard anti-lock braking. And when properly equipped with the available 5.7 liter V8 Brougham offers you impressive towing capacity—a full 7,000 pounds.\*

\*Includes trailer, passengers, equipment and cargo.



Allanté



Fleetwood Sedan



Sedan de Ville



Brougham D'Elegance





Sierra

In background, 1951 half-ton pickup by GMC Truck.

**A**t GMC Truck, our only business is trucks and vans, and has been for over 80 years. Our heritage and experience has earned the GMC Sierra pickup the highest resale\* over the past 12 years of any pickup truck in the U.S. from any company, foreign or domestic. You'll find our truck expertise in everything we

offer. From the safety of anti-lock brakes and the traction of an all-wheel drive system, to turbo-charged power that puts our name on a new performance truck.

You'll also see our expertise in maneuverable mid-size vans, agile 4x4s, in compact pickups built in the image of our big trucks, in our full-size pickups and chassis cabs.

We invite you to look into all the strengths, quality and value of our more than 80 years of truck experience, as shown in our 1992 line of GMC trucks and vans. If you would like more information and a catalog (for light duty) call toll-free: 1-800-879-4621 or (medium duty) 1-800-825-8390. Or visit your local GMC Truck dealer.

\*Excludes other GM products.



**THE STRENGTH OF EXPERIENCE.™**





Sonoma SL

## SONOMA®

This is the compact pickup that meets the demand for a strong, versatile work or play truck that's adaptable to many usages. Among its options: regular or Club Coupe cabs, 2-or-4WD, engines ranging from 2.5L to a new, high-performance 4.3L V6, with standard 5-speed or available 4-speed automatic transmission with overdrive.



Suburban SLE

## SUBURBAN®

All new for '92, Suburban rides even smoother and has an even higher maximum towing capacity than before—a full 10,000 lbs\* when properly equipped. New aerodynamic styling, convenience features and available seating for nine, assure Suburban's position as the pre-eminent luxury truck wagon. Debuts in Spring, 1992.

\*Includes trailer, passengers, cargo and equipment.



Yukon GT SLE

## YUKON®

So new for '92, it has a new name. Yukon features new aerodynamic styling, V8 power, and a myriad of comfort and convenience improvements beginning with a lower step-in height and many of the other amenities it shares with Suburban.



Jimmy SLT

## JIMMY®

Jimmy cuts a wide swath through the compact sport utility field with a powerful, 160 SAE net horsepower, 4.3L Vortec V6, and the safety of standard 4-wheel anti-lock brakes. Jimmy offers an ultra-luxury SLT Touring Package with leather in the seating areas and Softride Suspension package.



## SIERRA®

GMC Truck's full-size Sierra pickup is justifiably desirable. With the highest resale of any pickup in its class.\* It's available in many ways: in regular or Club Coupe cabs, short or long cargo boxes, in Wide or Sportside styling, with standard 5-speed manual or optional 4-speed overdrive automatic transmission and with six engines, in 2-or-4WD. Engine choices range from standard V6 to optional V8s including a new turbo diesel.

\*Excludes other GM products.



## SAFARI®

New for '92 is an available high performance V6 developing 200 horsepower—underlining the high technology and safety already associated with Safari's standard 4-wheel anti-lock brakes and available full-time, all-wheel drive. Ideal for families, Safari has a roomy, comfortable interior and an outstanding towing capacity.



## RALLY®

Full-sized Rally offers roominess, V8 performance, rear-wheel drive, and available seating for up to 15. 1992 improvements include new rounded front-end styling and available remote keyless entry system. Properly equipped, a 3500 series Rally can tow up to 10,000 lbs.\*

\*Includes trailer passengers, cargo and equipment.



## TOPKICK/TILTMASTER®

North America's most advanced medium-duty trucks. TopKick offers reliability, UpTime and low life-cycle costs with gasoline or diesel power; Tiltmaster adds new features to low-cab forward benefits. There are TopKick and Tiltmaster models for virtually all applications.



Sierra "Club Coupe" SLE



Safari XT AWD SLT



125" Rally STX



TopKick/Tiltmaster





Saturn SL2™

**W**ell, what a year it's been. After all, launching a brand new car company isn't something you do every day. But we built our first car. And we sold our first car. And now? We're real happy to be able to tell you about our second model year.

At Saturn, our mission is to design and build small cars in this country that can compete anywhere in

the world. Of course, our principal market is right here at home. But we understand there are some first-year Saturns that made it overseas somehow. (And if our import competitors want to do it again and take our 1992 models home for inspection, well, we'll continue to take it as a compliment.)

In 1992, look for the same goals we set for ourselves in '91. Full partnership between management

and labor. Full partnership with our suppliers. Full partnership with our retailers. And most important, an absolute commitment to provide our customers with the best cars possible, with the highest automotive value, in the best possible way.

By the way, that's our top of the line sedan in the photograph up there, the SL2. Turn the page and we'll show you more.



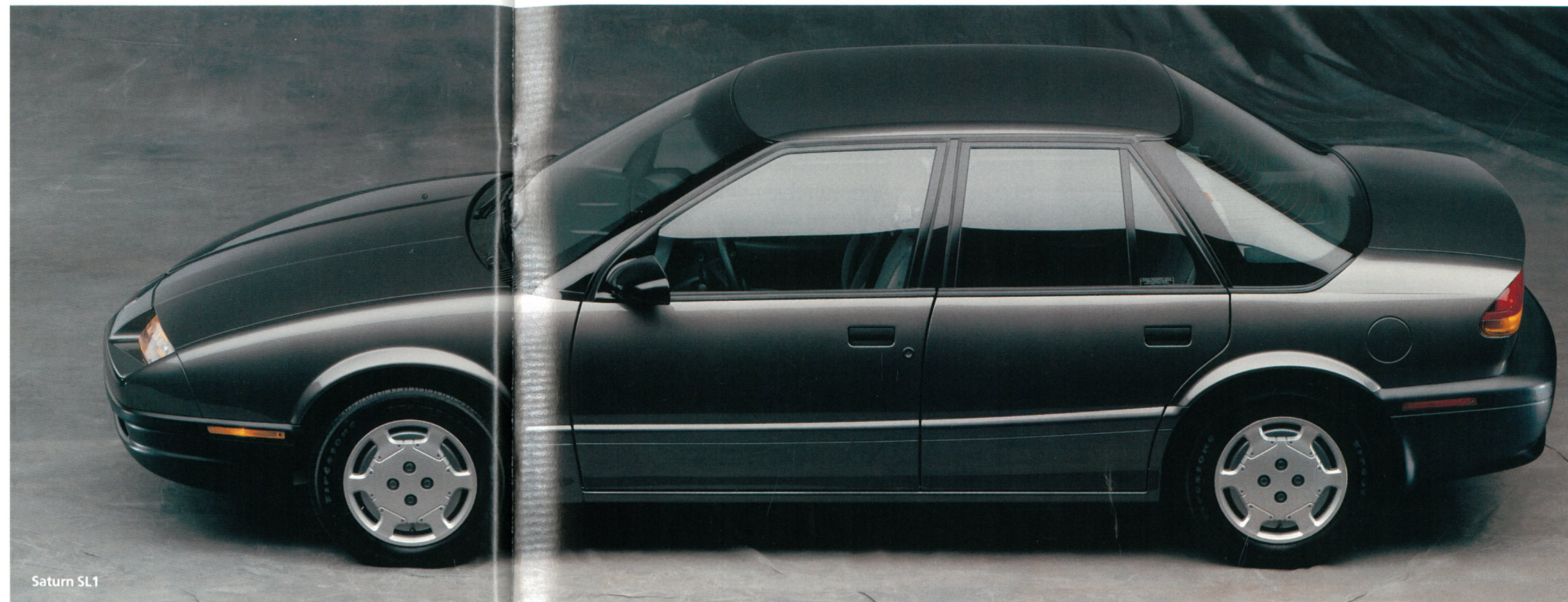
**A DIFFERENT KIND of COMPANY.  
A DIFFERENT KIND of CAR.**

*If you'd like to know more about Saturn, please call us at 1-800-522-5000.*



## THE SATURN SEDAN

Did we tell you how much added value you get in all our cars? Not yet? Take a look at our SL1™. By starting from scratch, we were able to offer a lot of the amenities you'd find only on more expensive cars (and some you wouldn't even find there). Like: dent-resistant polymer bodyside panels, a stainless steel exhaust system, a radically new automatic transmission, really good economy of ownership (like an EPA-estimated MPG of 26 city/35 highway), common-sense serviceability, and, well, looks like it's time to talk about our coupe.



Saturn SL1

## THE SATURN COUPE

Performance-oriented car fans love our SC. Probably because performance-oriented car fans created it. The 1.9-liter DOHC engine joins perfectly to either of our transmissions, and the result is a lot of fun, but also surprisingly good gas mileage for the kind of power you get (EPA-estimated MPG 24 city/33 highway). Throw in the tight handling, sport-tuned suspension, head-turning styling, and then, the best part, price it lower than anyone might possibly expect. That's our coupe.



Saturn SC



# GMAC. Quality financial services for quality GM products.



## GMAC gives you a variety of ways to purchase or lease...

We've been serving people like you for over 70 years...helping almost 122 million people purchase the GM car or truck of their dreams. Take a look at the variety of financing and leasing plans available to qualified customers:

□ **Retail Finance Plan** is GMAC's most popular installment financing option. It offers variable terms and conditions that can be custom-tailored to meet your needs.

□ **SMARTLEASE by GMAC**® offers customers the option to lease the GM vehicle of their choice. With leasing, customers pay for the portion of the vehicle's value they intend to use during the lease, rather than its total value. Consequently, SMARTLEASE® monthly payments are typically lower than finance payments. By leasing instead of buying, you may be able to afford a vehicle with more options or a more expensive model. And, the affordable monthly payments on short-term SMARTLEASE contracts may allow you to drive a new car or truck more often.

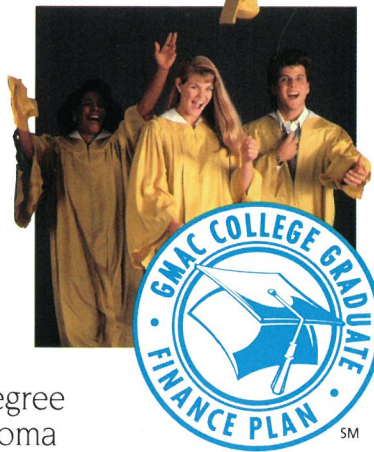
**SMARTLEASE**®  
by GMAC

□ **Flexible Finance Plan** offers financing at fixed or variable rates. Under the fixed rate option, your finance rate remains constant throughout the term of the contract. With variable rate financing, your finance rate may change during the contract term. If your rate changes, your monthly payments will remain the same but the length of your contract will either be shortened or extended.

Finance charges under the Flexible Finance Plan are assessed on a daily basis. This means you are charged only for the actual number of days the unpaid balance is outstanding. Simply stated, if you make your payments before the due date, you can reduce your finance charges.

□ **Buyer's Choice Plan** gives you an attractive balloon-payment alternative to conventional retail financing or leasing. The Buyer's Choice Plan features low monthly payments; the option of returning the vehicle to GMAC at the end of the contract with no further obligation (other than the payment of the disposal fee, assuming good vehicle condition and no excess mileage); plus options to pay the balloon-payment or refinance and retain the vehicle at contract maturity.

□ **GMAC College Graduate Finance Plan** offers a \$500 discount off the purchase or lease of a new Chevrolet, Geo, Pontiac, Oldsmobile, Buick or GMC Truck to eligible graduates. The Plan is designed for graduates of a two- or four-year degree program, a nursing diploma program, or graduate school. Graduates may participate in the Plan six-months prior to and up to one year after graduation. Graduate students may qualify for the Plan the entire time they are enrolled and up to one year following graduation. Offer expires April 30, 1992. Other qualifications apply. See your participating GM dealer for details.



□ **First-Time Buyer Plan** offers special incentives from participating GM divisions for qualified cus-

tomers who have never financed a new vehicle, have no negative credit history, and have verifiable income and residence. The incentive will be applied to the purchase price of a new GM vehicle financed through GMAC.

□ **Custom Payment Plan** tailors repayment terms to fit your needs if your income is derived on an irregular basis.

□ **Deferred Payment Plan**, available on many of our finance plans, allows you to defer your first payment up to 90 days. Finance charges accrue from the date of purchase.

**GMAC ELECTROCHEK**®

□ **ELECTROCHEK**® allows automatic monthly deduction of your finance payment from your checking account. ELECTROCHEK means you'll never forget to make your payment. And you'll save on postage, too.



## ...And ways to protect your purchase.

In conjunction with our Motors Insurance Corporation (MIC) subsidiary, GMAC offers coverages that protect your GM vehicle.

### Mechanical service agreements for cars and light-duty trucks

□ **New GM Vehicles** can be covered by mechanical repair protection that enhances your new

vehicle warranty and provides protection beyond the warranty period. The **General Motors Protection Plan** (GMPP), administered by MIC, is available through your GM dealer. It offers a wide range of plans and term/mileage options so you can select the level of coverage that best meets your needs. Towing and road service and rental options are available.



□ **Used Vehicles** can also be protected. **VALUE GUARD USED**™ offers mechanical repair protection for eligible used vehicles purchased or leased from participating GM dealers. The plan covers most mechanical repairs including the cost of parts and labor minus a small deductible. Car rental reimbursement and towing and road service coverages are included. A special plan, **VALUE GUARD EXTRA**™, is available for late model GM vehicles.



### Insurance Coverages

□ **MIC Credit Life** and **Disability Insurance** is available when you finance a vehicle through a participating GM dealer. Credit life insurance protects your family survivors by paying off all or a major portion of the finance contract in the event of your death. Credit disability insurance makes your monthly finance payments if you become sick or injured and cannot work for a designated time.

These programs are offered through GM dealers to eligible purchasers and are not available in every state. Certain plans and programs are not available in Canada. See your local GM dealer for more details.



**GMAC**®  
FINANCIAL SERVICES



# Safety isn't one thing. It's everything.

It's accident avoidance. It's crash protection. It's driver performance. It's a series of **Total Safety Systems™**—over 100 different safety features that can give you the protection and peace of mind you need. At General Motors, we know that quality begins with safety.

## Safer stops. Even on slippery roads.

The best way to avoid injuries is to avoid accidents. And that's precisely what GM's anti-lock brakes can help you do. Computerized sensors detect when a car's wheels begin locking-up, then pump the brakes automatically to restore the driver's control. GM provides anti-lock brakes as standard equipment on more cars and trucks than anyone else. In fact, with our new ABS VI technology, we're the only major carmaker—import or domestic—to make them standard on many small cars this year.

## All-around protection for you and your family.

Reinforced steel sections strengthen the roof,\* front and sides of GM cars, enveloping your family in a rugged "safety cage." Our safety belts are scientifically designed, positioned and anchored to give you excellent protection. In all, we've developed over 100 different safety features. Our **Total Safety Systems™** help reduce highway injuries and fatalities all over the world.



## Nobody knows more about how to keep your family safe than General Motors.



No other carmaker does so many tests, with so many different physical types of test dummies. No other carmaker has a medical advisory committee. No other carmaker has

\*Except on convertibles

a biomedical research laboratory to help reduce injuries caused by impact. As the world leader in automotive safety research and technology, we're committed to protecting you—and your family. It's one more way we're putting quality on the road.

**Buckle up, America!**

GM reserves the right to make changes in equipment, specifications, models, and availability.



MARK OF EXCELLENCE  
**PUTTING QUALITY  
ON THE ROAD™**