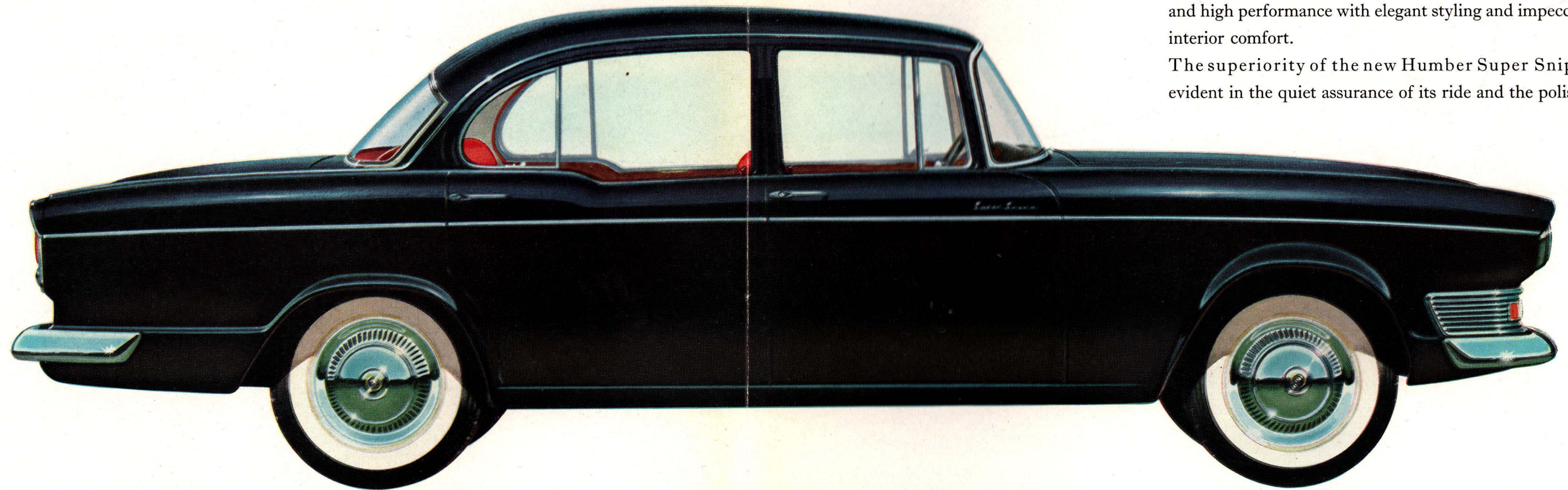
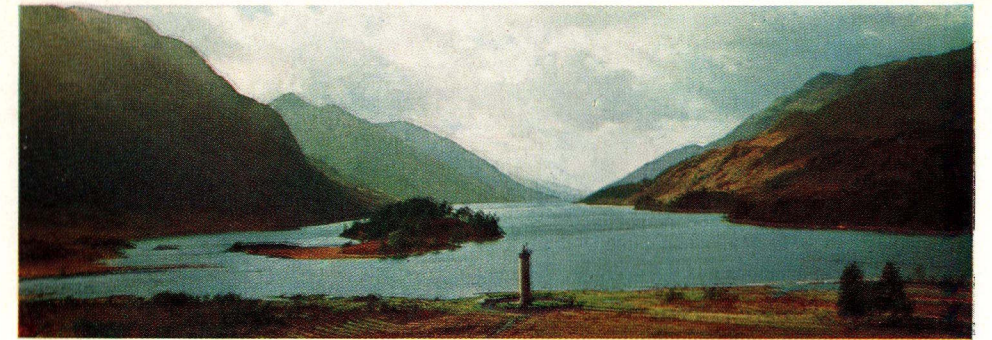




ROOTES MOTORS LIMITED  
*present the*  
NEW HUMBER SUPER SNIPE



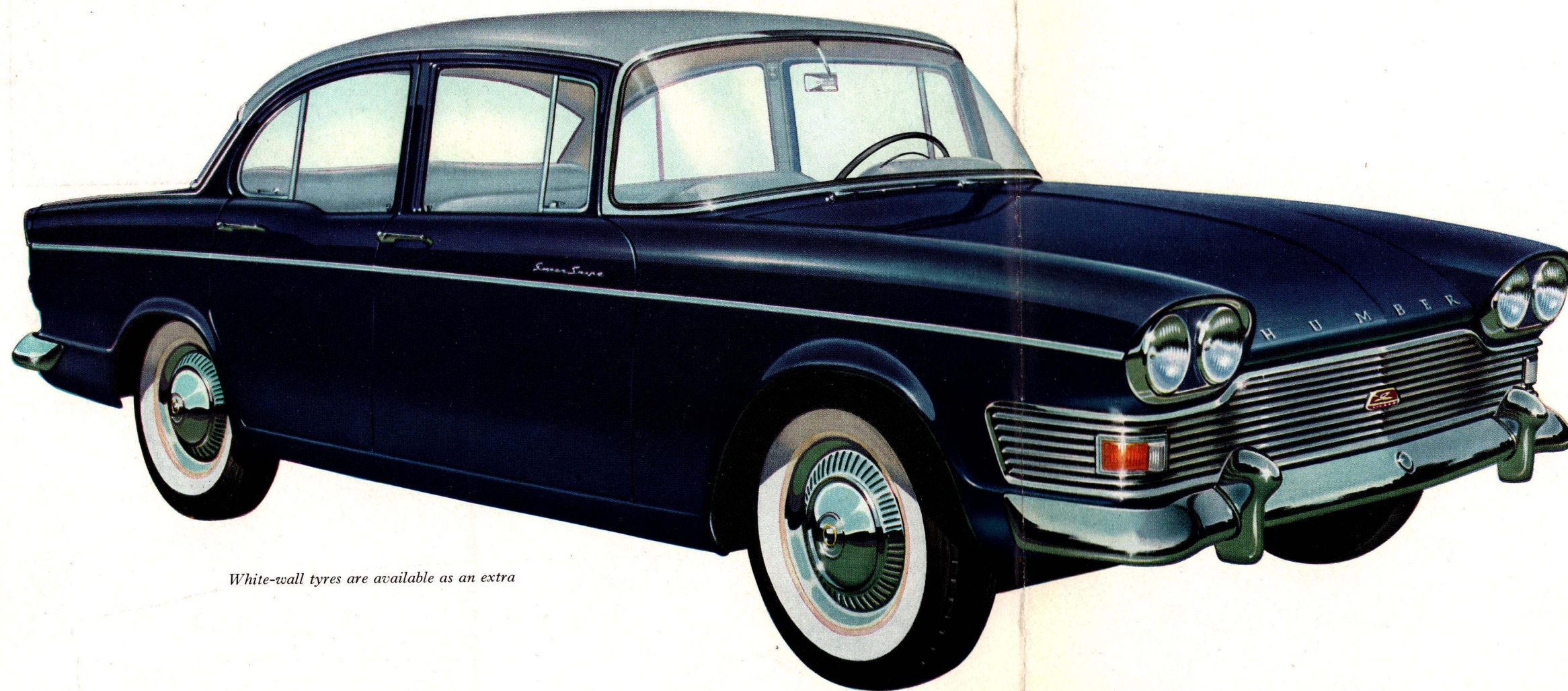
The distinguished new Humber Super Snipe is one of the world's really fine cars. Built with traditional Humber quality and craftsmanship, it combines advanced design and high performance with elegant styling and impeccable interior comfort.

The superiority of the new Humber Super Snipe is evident in the quiet assurance of its ride and the polished

a high performance quality car

performance of the masterly 3-litre engine, now increased in power. New refinements augment the ease and pleasure of *luxury travel*. An excellent system of suspension ensures firm road-holding and stability, and front disc brakes give smooth, safe braking from any speed. The choice of extras includes: fully-automatic transmission or overdrive, power-assisted steering and individual front seats. There is a wide choice of harmonious colour schemes.



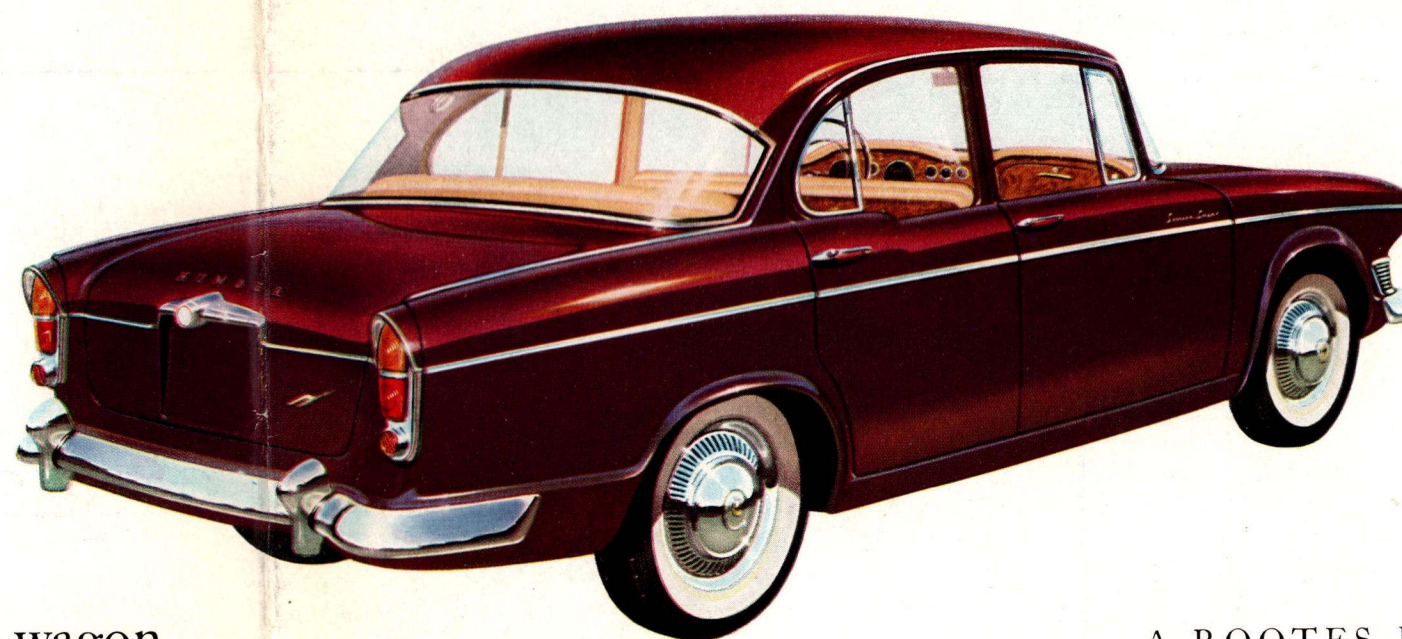


*White-wall tyres are available as an extra*

The new styling of the Humber Super Snipe has a contemporary elegance that reflects the quality of this superlative car. Twin headlights are fully integrated in the front end design, and chromium is used with discretion. Doors open widely to facilitate entry; both front and rear windows have draughtless quarter-lights.

Many mechanical refinements have been introduced in the new Humber Super Snipe. Power is increased to 132.5 b.h.p. and the fuel tank capacity is 16 gallons (72 litres). Improvements in the transmission and silencing system give smoother, quieter running. Driving control is simplified by a new and highly-efficient steering unit (smooth and light in action), and a new light-pressure clutch. The instrument panel is re-designed for greater efficiency and safety, the rear compartment has two separate reading lights, there is a wide-vision backlight and a zone-toughened windscreen ensures all-time visibility with safety.

a car of great distinction... **HUMBER SUPER SNIPE**



saloon

limousine

station wagon

A ROOTES PRODUCT





When you have luxurious  
appreciate the smooth even  
new seating trim, superior  
ventilation, the comfort of  
padded and cushioned in  
and front seating, you can

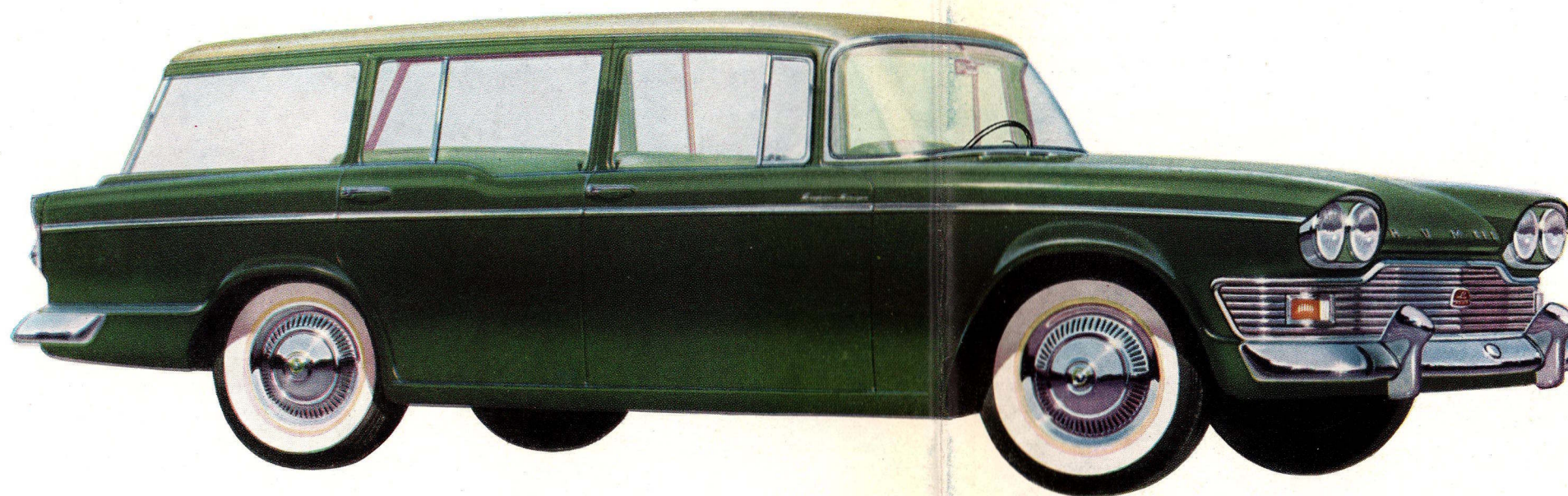
specify individual reclining front seats as an extra. Resilient, deep-  
pile carpeting, attractive and durable, gives comfort underfoot.  
An efficient system of draughtless ventilation circulates fresh air evenly  
throughout the interior, and there are draughtproof quarter-lights in  
both front and rear windows. A heater is available as an extra.  
The re-designed instrument panel and other fittings are in rich walnut  
finish. Full scale luxury amenities include two foldaway tables, a roomy

locker, stylishly-shaped armrests to all doors, extra-capacious front  
door pockets, and cigar lighters in both compartments.  
A courtesy light on the rear-view driving mirror is operated by opening  
the front doors or by a separate switch; opening the rear doors switches  
on two interior lights in the rear compartment – conveniently located  
for reading – which also have independent switches. All doors have  
“child-proof” locks.

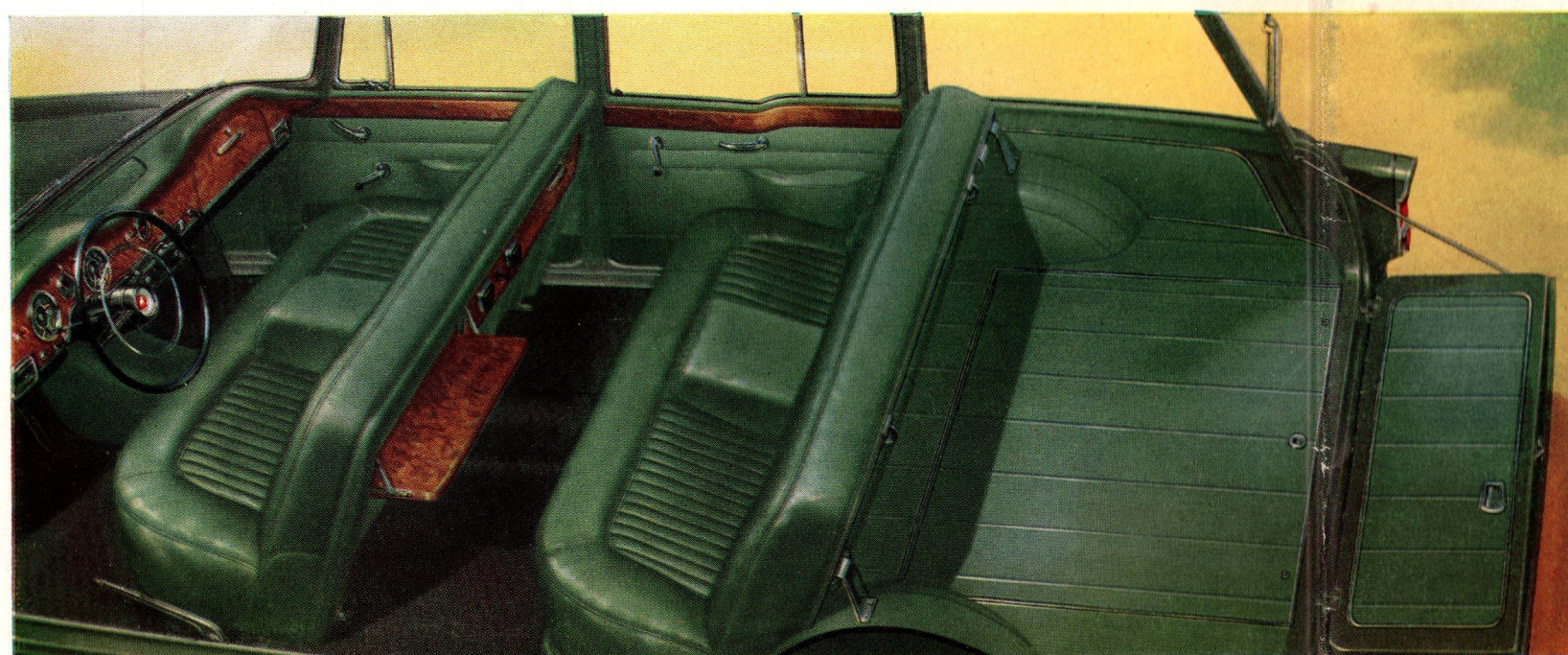
## superb ease and comfort in a luxurious interior







## a distinguished dual-purpose station wagon



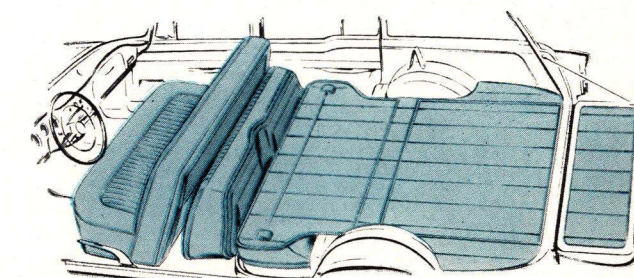
The new Humber Super Snipe Station Wagon is the aristocrat of dual-purpose cars. It is built to the same high standards as the Saloon, with comparable styling and similar advanced features and luxury appointments.

The Station Wagon provides luxury passenger comfort and practical facilities for the transport of a large quantity of luggage and goods. It is quickly converted from a car with full passenger accommodation to one with accommodation for passengers and loads. Outwardly, it resembles the elegant saloon.

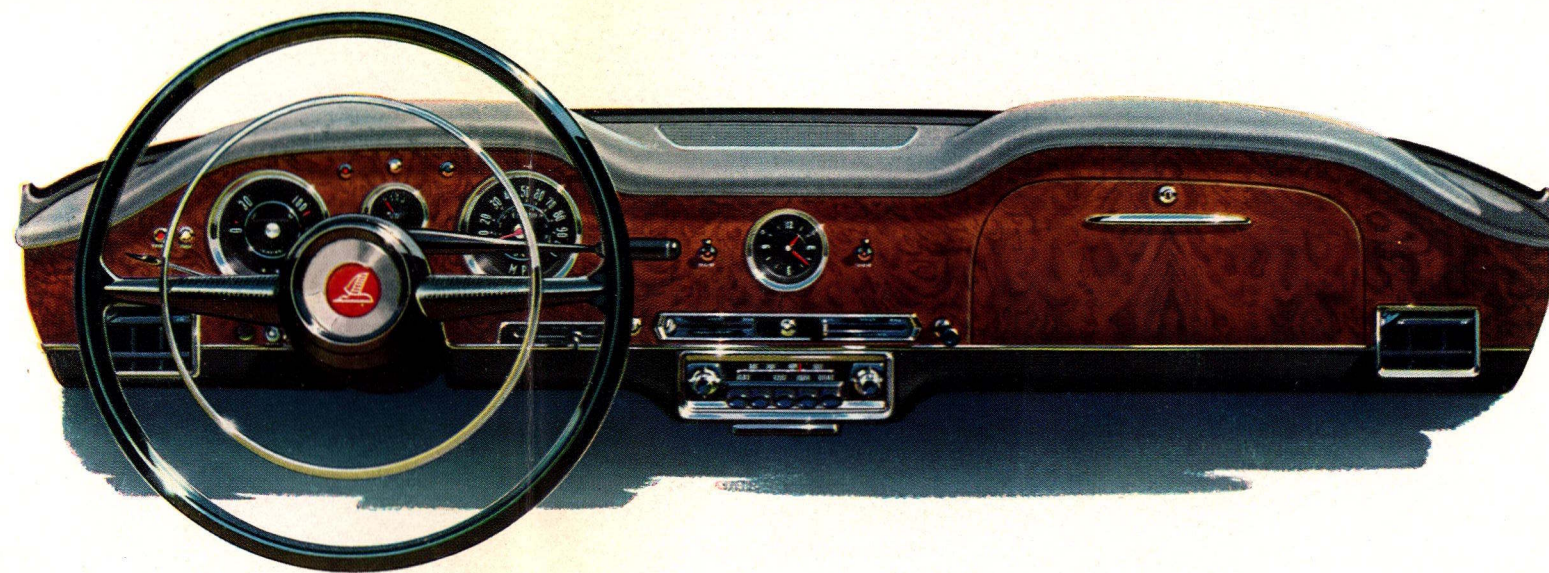
When the rear seat is in the raised position, the finely-appointed interior has spacious seating for six passengers, and a commodious compartment at the rear is available for normal luggage. For additional loading space, the rear seat folds into the floor, leaving full seating comfort for three. The smart floor covering is both hard-wearing and serviceable.

Used as a sturdy and efficient carrier, the Station Wagon will carry up to 840 lb. (381 kg.) of bulky goods. The back-light hinges up and the tailgate opens out to form a rigid loading platform which can be left open for carrying lengthy articles up to 77 inches (1.956 m.) long.

The internal loading space is completely unobstructed and guide runners are moulded to the floor to protect baggage. All-steel unitary construction provides great strength and safety for both passengers and loads. The Station Wagon can be supplied with fully-automatic transmission or overdrive, power-assisted steering and individual front seats.



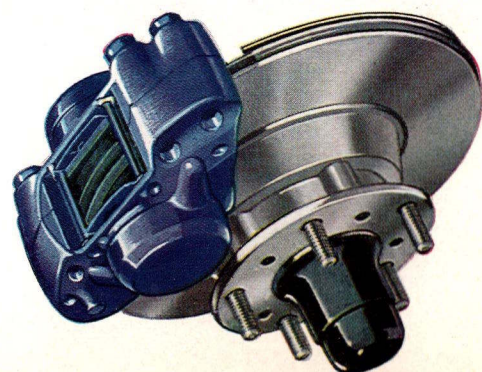
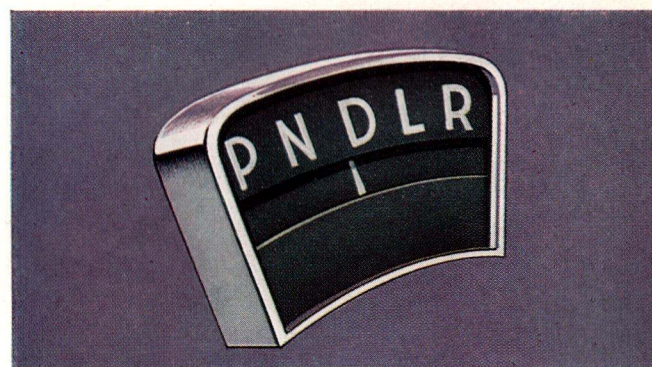
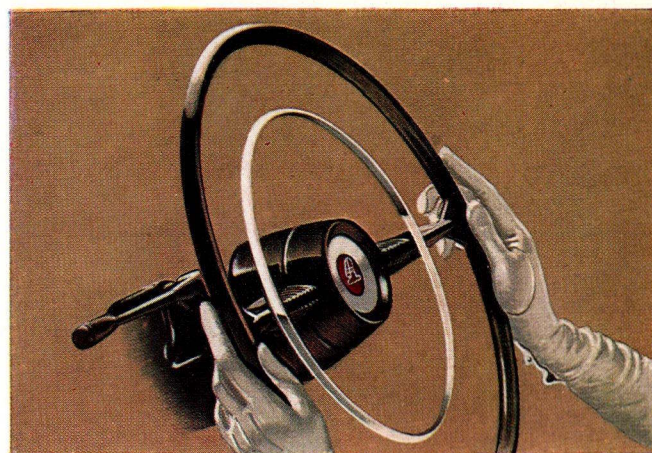




## the enjoyment of high performance motoring...

You drive in superb comfort, with an ease of control that heightens the pleasure of high-performance motoring. The steering unit is of new design, smooth and precise in action. (Power-assisted steering is available as an extra). A handsome instrument panel, in walnut finish and expertly planned, is contoured by a protective padded safety roll. The lower edge of the fascia is protected in a similar way. On the right is a roomy locker.

The carefully-grouped range of instruments is fully-illuminated for easy night-time reading; the lighting can be varied in brilliance. Speedometer, fuel gauge and the 3-in-1 gauge – for ammeter, oil pressure and water temperature – are directly in front of the driver and edge-lighted. A headlamp flasher control is embodied in the flashing indicator switch, and there are warning lights for the indicators, headlight beams, fuel level, choke, ignition and handbrake/brake fluid level. A clock and cigar lighter are fitted, and there is provision for a heater and radio as extras.



### Power-assisted steering

For those who require it, power-assisted steering is available as an extra. With this hydraulically operated installation, steering becomes virtually effortless, yet the driver maintains complete "road feel" and is in full control at all times.

### Fully-automatic transmission

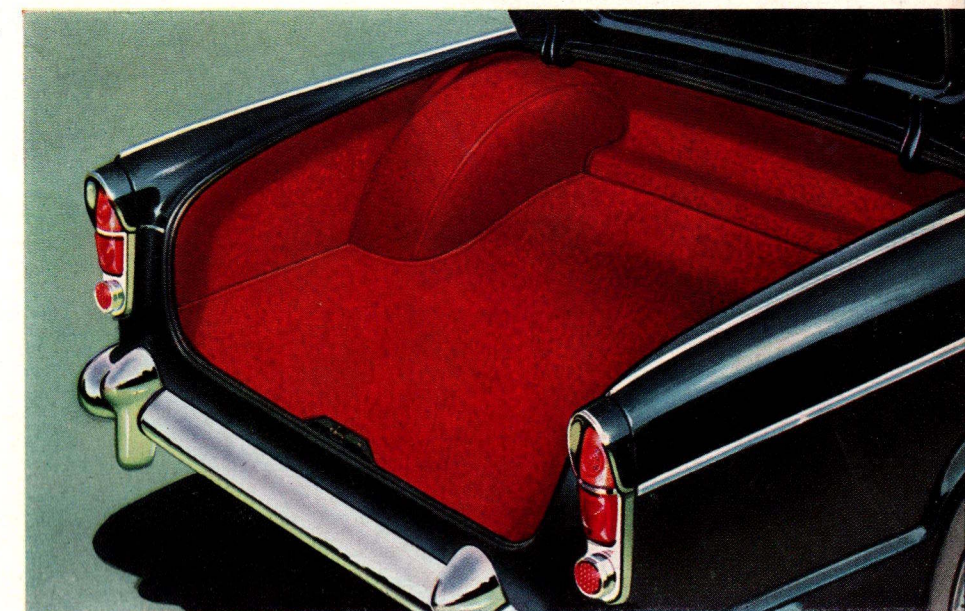
For those specifying fully-automatic transmission, the efficient Borg-Warner system is available as an extra. The transmission changes smoothly and silently – you do no more than apply pressure to the accelerator. When required, intermediate gear can be held by a simple operation of the selector lever.

### Overdrive

Also available as an extra, overdrive gives refined performance with fuel economy. The overdrive is engaged by a switch on the steering column which cancels itself when changing down, and is linked with a warning light on the fascia panel to indicate when overdrive is in operation.

### Safe braking

The disc brakes on the front wheels are matched with large area drum brakes at the rear – a highly efficient system, effective in all weathers, under all road conditions. The front disc brakes are self-adjusting and easy to service; they resist fade and ensure smooth, positive stopping power, even at the highest speeds. The instrument panel carries a combined warning light for hand brake and brake fluid level indicator, which operates when the handbrake is applied or the brake fluid level is low.



## carpeted luggage compartment

Even the luggage compartment is finished to luxury standards. To protect valuable luggage, a carpet is tailored over the floor, sides and spare wheel. Although the petrol tank capacity is increased to 16 gallons (72 litres), the compartment still has its full luggage capacity of 19½ cubic feet (0.552 cu. m.) with the spare wheel in position.



## exclusive luxury features



The dignified Humber Super Snipe Limousine is eminently suitable for informal occasions, for professional or private use. It has all the advantages of the Saloon, with the additional advantage of privacy when desired. The specially-designed interior incorporates an adjustable partition with a glass screen to divide the two compartments. When you wish to use the car as a chauffeur-driven Limousine, the glass screen can be raised to separate the compartments. Alternatively, the glass screen can be lowered to provide a luxury saloon. The operation is simple and the glass screen can be locked in any position. The partition and front seat form one unit with forward and rearward adjustment. There is an efficient system of ventilation, and both front and rear windows have draughtless quarter-lights; separate heaters are available for both compartments, as extras. An ashtray and cigar-lighter are incorporated into each rear door armrest.

## folding tables for passengers

In the above Limousine interior, the illustration shows one of the two "foldaway" tables provided for passengers' use in the rear compartment. They are finished in walnut to harmonise with other appointments; on the Saloon and Station Wagon models the centre panel contains two ashtrays and a cigar-lighter.



### individual front seats

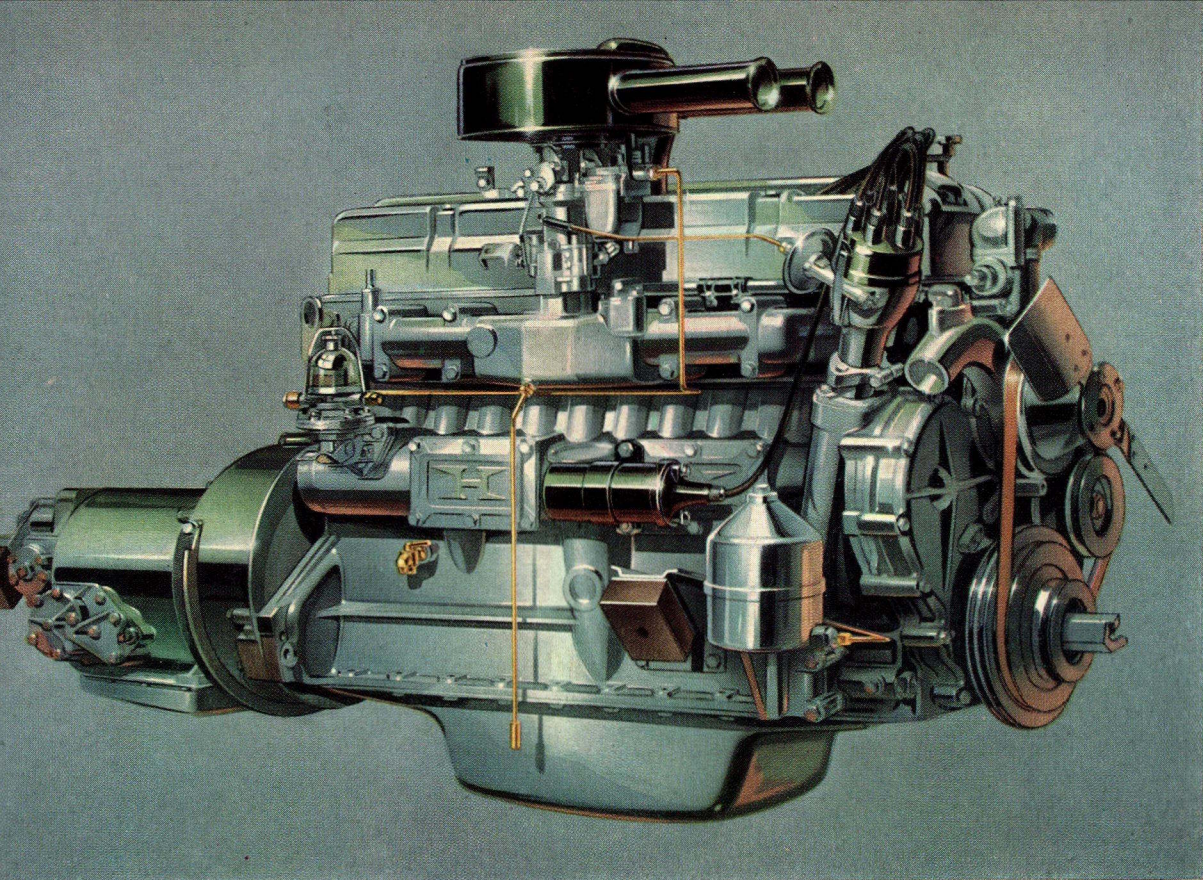
If you prefer separated front seats, you can specify these sumptuous individual reclining front seats, available as an extra. Both seats are fully independently adjustable for legroom, rake and height. They are deep-cushioned, with centre armrests that fold into the seat squab.



### bench type seating

The standard seating is designed to allow ample headroom in front, with the maximum legroom for passengers in the rear compartment. It has a large forward and rearward adjustment to meet individual requirements. The broad centre armrest folds back to provide additional seating accommodation.





# powerful 6-cylinder engine of advanced design

now develops 132.5 b.h.p.

Further improvements in the efficiency of the brilliant 3-litre Super Snipe engine have increased b.h.p. to 132.5 at 5,000 r.p.m. With this ample and flexible power, operation is smooth, quiet and effortless under all conditions, giving road speeds up to 100 m.p.h. (160 k.p.h.).

Finely engineered and precision-built, the power unit has a 3.437 inch (87.31 mm.) bore and a 3.25 inch (82.55 mm.) stroke, with a compression ratio of 8.0 : 1.

Improvements in the latest model include larger inlet valves, dual valve springs and new solid skirt pistons for higher performance. The silencing system is improved by the introduction of a new silencer and resonator box.

Gear changing is crisp, positive and easy, due to a specially-developed gearbox with synchromesh on all forward gears. For running refinement, the rear axle final drive ratio is now 4.22. The overall ratios are now Top: 4.22. Second: 6.129. First: 11.835. Reverse 13.246.

Advanced technical features include: a 9-inch dry plate diaphragm clutch for improved efficiency, longer life and lighter pedal control; hemispherical combustion chambers with angled valves; chrome-plated top piston rings; camshaft in oil bath; exhaust ports designed for high-efficiency "breathing"; and a cooling system with 2-bladed fan.



## ROOTES MOTORS LTD

SALOON · LIMOUSINE · STATION WAGON  
A ROOTES PRODUCT

**ENGINE.** Six cylinders in line; overhead valves pushrod operated. Compression ratio 8.0 : 1. Zenith down-draught carburettor.

Bore and Stroke - 3.437 x 3.25 in. (87.3 x 82.55 mm.). Cubic capacity - 180.8 cu. ins. (2965 c.c.). Engine develops - maximum B.H.P. 132.5 at 5,000 r.p.m.

**IGNITION.** Coil and distributor; centrifugal and suction controlled automatic advance and retard. Champion N5 sparking plugs.

**COOLING SYSTEM.** Pump and two-bladed fan; special duct in cylinder block provides maximum cooling for the hottest parts of the engine. Automatic thermostatic control.

**GEARBOX.** Three-speed gearbox with baulk ring synchromesh on all forward gears; operation by finger-tip lever on steering column; combined dipstick and filler accessible through floor.

**CLUTCH.** Borg and Beck 9 in. (229 mm.) diameter single dry plate diaphragm type; hydraulically operated.

**OVERALL RATIOS.** Top 4.22 : 1; 2nd 6.129 : 1; 1st 11.835 : 1; Reverse 13.246 : 1.

**REAR AXLE.** Semi-floating design with hypoid final drive. Axle ratio 4.22 : 1.

**UNITARY CONSTRUCTION.** Chassis and body form a single structure of immense strength and rigidity.

**FRONT SUSPENSION.** Independent with silico manganese coil springs.

**REAR SUSPENSION.** Long semi-elliptic springs attached to frame by steel and rubber bushes. Further insulation is provided between springs and axle casing by rubber mountings.

**SUSPENSION CONTROL.** Armstrong telescopic shock absorbers. Anti-roll bar located between bottom links of front suspension.

**WHEELS.** Disc wheels with nave plates and trims; spare wheel housed vertically at the side of the luggage locker. Station Wagon: housed below luggage floor.

**TYRES.** Tubeless cushion 6.70 x 15 in.

**BRAKES.** Girling brake system with vacuum servo operation; 11 1/8 in. (289 mm.) diameter disc brakes front and 11 in. (279 mm.) diameter rear drum brakes; handbrake lever at side of driver's seat operates mechanically on rear wheels. Brake warning light on facia.

**STEERING.** Burman high efficiency recirculating ball type of variable ratio. Attractive two-spoke steering wheel with plated horn ring. Left- or Right-hand drive available according to market requirements.

**PETROL TANK.** 16 Imperial gallons (72 litres) capacity; located at rear of chassis. Warning light on facia.

**TOOL KIT.** Comprehensive kit of tools including starting handle, wheelbrace, jack, tommy bar, spanners, nave plate extractor, etc.

**OVERDRIVE UNIT.** (Available at extra cost.) For those owners wishing to enhance the degree of pleasure to be derived from the Hummer Super Snipe, a Laycock-de Normanville overdrive is available. It is designed for use in top gear and is operated in conjunction with a final drive ratio of 4.22 : 1 (3.283 Overdrive Top). As this unit is fitted during production it must be specified at the time of placing your order.

**FULLY-AUTOMATIC TRANSMISSION.** (Available at extra cost.) The Borg-Warner automatic transmission system

with 4.22 axle ratio is available for drivers who prefer the simplicity and relaxation of two-pedal motoring. As this unit is fitted during production it must be specified at the time of placing your order.

**INDIVIDUAL FRONT SEATS.** Adjustable reclining individual front seats, available as an extra, must be specified at the time of placing your order.

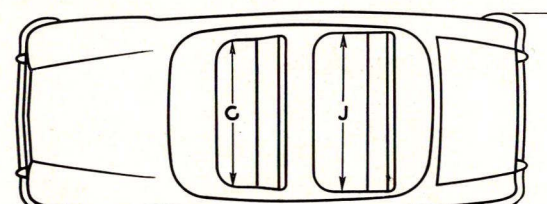
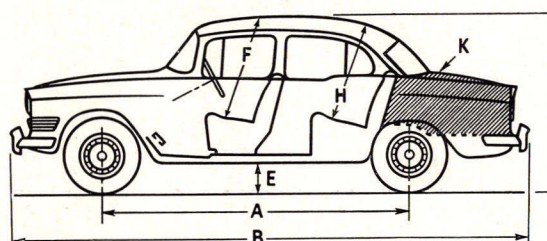
**POWER-ASSISTED STEERING.** As an added refinement, at extra cost, Power-assisted steering can be fitted which, combined with the high-efficiency steering unit, provides modern means of steering control. As this unit is

fitted during production it must be specified at the time of placing your order.

**WEIGHTS (approx.)**

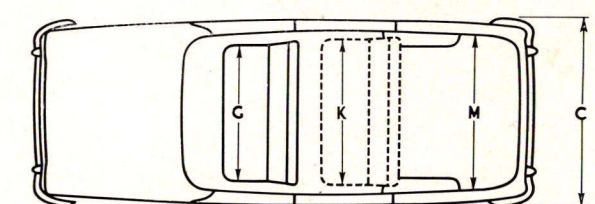
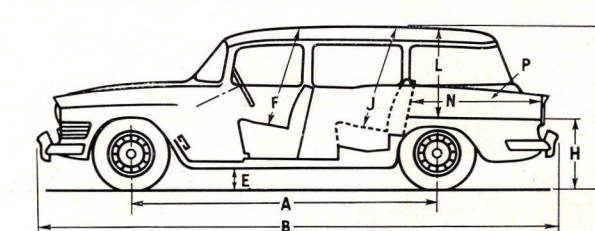
<i>Saloon</i>		
Unladen (with petrol and water)	3,402 lb.	(1543 kg.)
Dry (without petrol and water)	3,250 lb.	(1474 kg.)
<i>Station Wagon</i>		
Unladen (with petrol and water)	3,601 lb.	(1633 kg.)
Dry (without petrol and water)	3,449 lb.	(1564 kg.)

## dimensions



Saloon and Limousine		in.	m.
A	Wheelbase...	110	2.794
B	Overall length ...	188	4.775
C	Overall width ...	69 1/2	1.765
D	Overall height ...	61	1.549
E	Ground clearance ...	7	0.178
F	Front seat headroom ...	40	1.016
G	Front seat width ...	51 1/2	1.308
H	Rear seat headroom ...	36	0.914
J	Rear seat width ...	59	1.498
K	Luggage capacity		
	(with wheel) ...	19 1/2 cu. ft.	0.552 cu. m.
	(without wheel) ...	21 cu. ft.	0.595 cu. m.

All models		in.	m.
	Front track ...	56 1/2	1.444
	Rear track ...	55 1/2	1.410
	Turning circle ...	38 ft.	11.582



Station Wagon		in.	m.
A	Wheelbase...	110	2.794
B	Overall length ...	188	4.775
C	Overall width ...	69 1/2	1.765
D	Overall height ...	62	1.575
E	Ground clearance ...	7	0.178
F	Front seat headroom ...	40	1.016
G	Front seat width ...	51 1/2	1.308
H	Tailgate loading height ...	31 1/2	0.806
J	Rear seat headroom ...	38 1/2	0.978
K	Rear seat width ...	55	1.397
L	Luggage compartment height ...	30 1/2	0.768
M	" " width ...	58 1/2	1.486
N	Luggage compartment depth		
	(Seat raised) ...	41 1/2	1.054
	(Seat lowered) ...	63	1.600
P	Luggage capacity		
	(Seat raised) ...	28 cu. ft.	0.793 cu. m.
	(Seat lowered) ...	56 cu. ft.	1.586 cu. m.

## colour schemes

**SALOON AND LIMOUSINE.** *Single tones:* Embassy Black with Red upholstery. Biarritz Blue with Blue upholstery. Maroon with Beige upholstery. Foam White with Red upholstery. Smoke Green with Green upholstery. Charcoal with Red upholstery.

*Two tones:* The first-named colour is the predominant body colour and the second is the roof. Charcoal/Dawn Mist with Red upholstery. Smoke Green/Sage Green with Green upholstery. Foam White/Windsor Blue with Blue upholstery. Biarritz Blue/Windsor Blue with Blue upholstery.

**STATION WAGON.** *Single tones:* Charcoal with Red up-

holstery. Smoke Green with Green upholstery. *Two tones:* The first-named colour is the predominant body colour and the second is the roof. Smoke Green/Sage Green with Green upholstery. Charcoal/Dawn Mist with Red upholstery. Foam White/Windsor Blue with Blue upholstery. Biarritz Blue/Windsor Blue with Blue upholstery.

**ACCESSORIES.** (Available at extra cost.) Radio; Heater and air-circulating equipment. For details of the full range of Rootes Special Accessories apply to your Dealer.

EXPORT **ROOTES** DIVISION

DEVONSHIRE HOUSE · PICCADILLY · LONDON · W1.

The Company reserves the right to alter any prices or specifications at any time, without notice, and all goods are sold subject to prices and Conditions of Sale ruling at the time of delivery.

Sales and Service  
in 163 Countries





# HUMBER SUPER SNIPE



# HUMBER SUPER SNIPE

