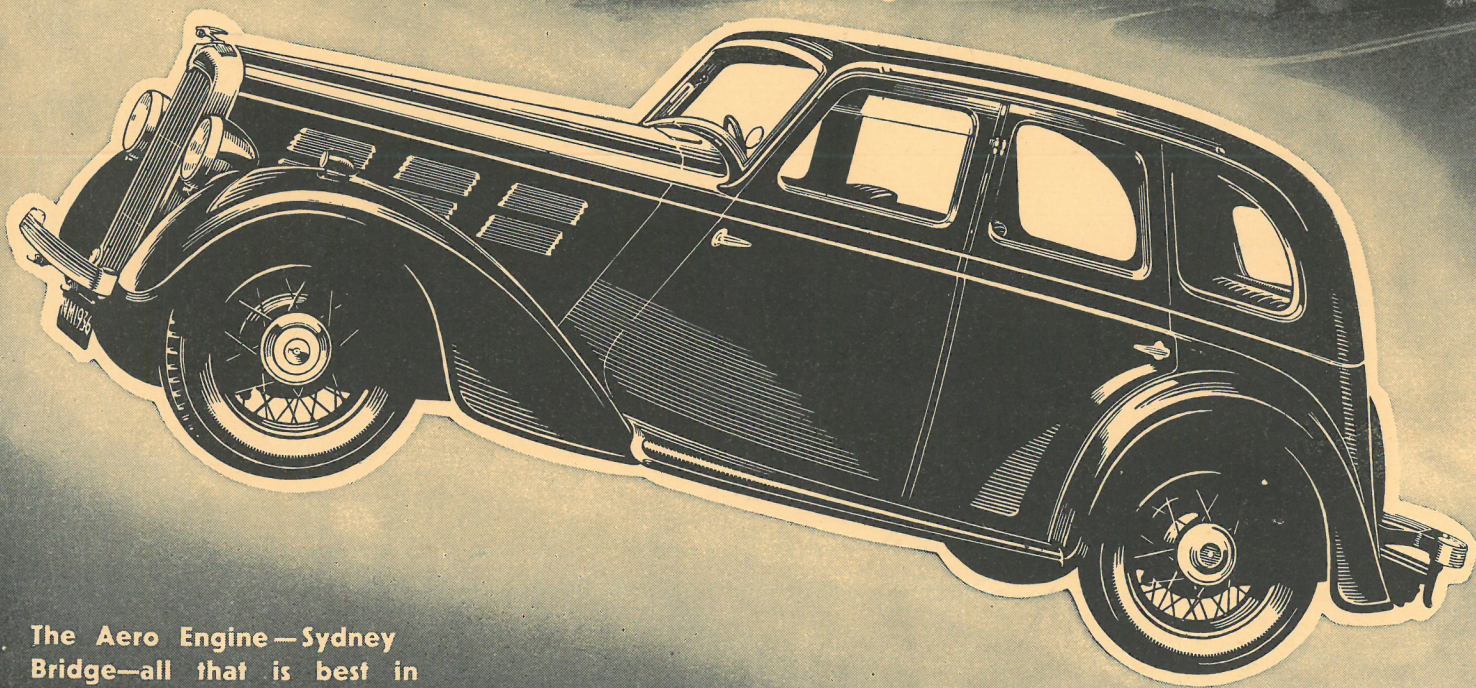


The New **MORRIS "14"** SIX CYLINDER

SPECIALISATION BUILT

-AND EXCESS TESTED



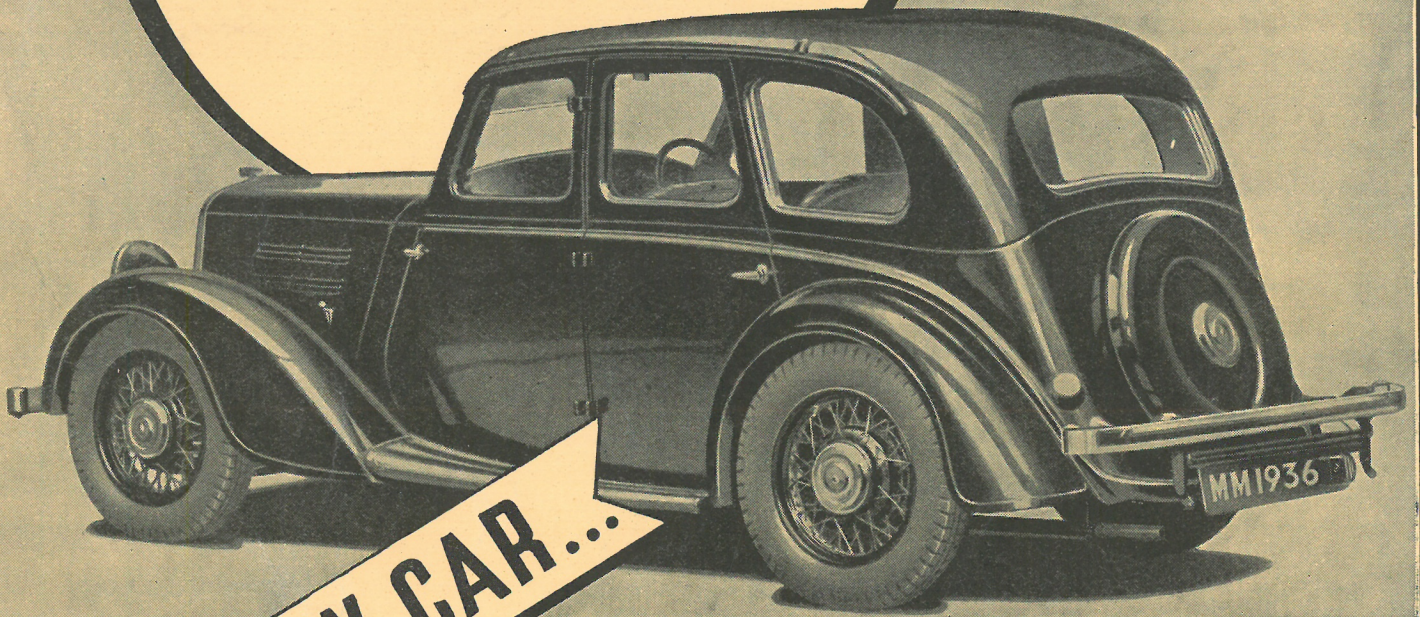
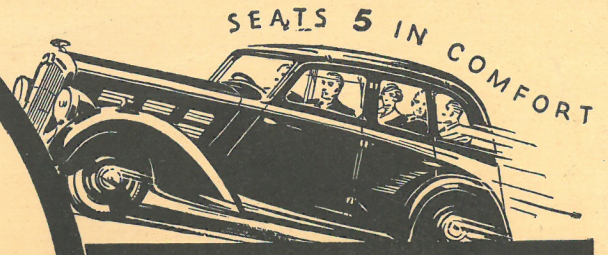
The Aero Engine—Sydney Bridge—all that is best in engineering—is EXCESS-TESTED. But Morris alone have introduced this principle in car manufacture. The new Morris "14" therefore comes to you with all the attributes of precision manufacture because it is Special-



By Appointment

Again!

MORRIS AHEAD OF ALL COMPETITORS



A NEW CAR...

that leads the **FOURTEEN** *field*

★ MORRIS six-cylinder smoothness. ★ Economical running costs. ★ High cruising speed.
★ Very fine acceleration and "get-away." ★ Comfort and capacity hitherto only associated with the larger car—full 56" track; full 5-seater capacity—overall length 168" (14 ft.)

★ The finest features:—

Engine and chassis "Specialisation-built" and "Excess-Tested." Morris "Completely-Controlled" draughtless ventilation system. Spring steering wheel. Five point engine suspension. Smith's Jackall hydraulic built-in

jacks. Large built-in luggage accommodation. Lockheed hydraulic brakes. Roomy body, exceptional headroom and narrow pillars. Five lamp equipment with positive earth: foot-operated dip and switch mechanism, etc.

For prices and full details see editorial columns

THE NEW



MORRIS

THE MODERN CAR

IF YOU DON'T BUY MORRIS AT LEAST BUY A CAR MADE IN THE UNITED