

AS DEPENDABLE AS AN AUSTIN

EXPORT

THE

Austin

TWELVE

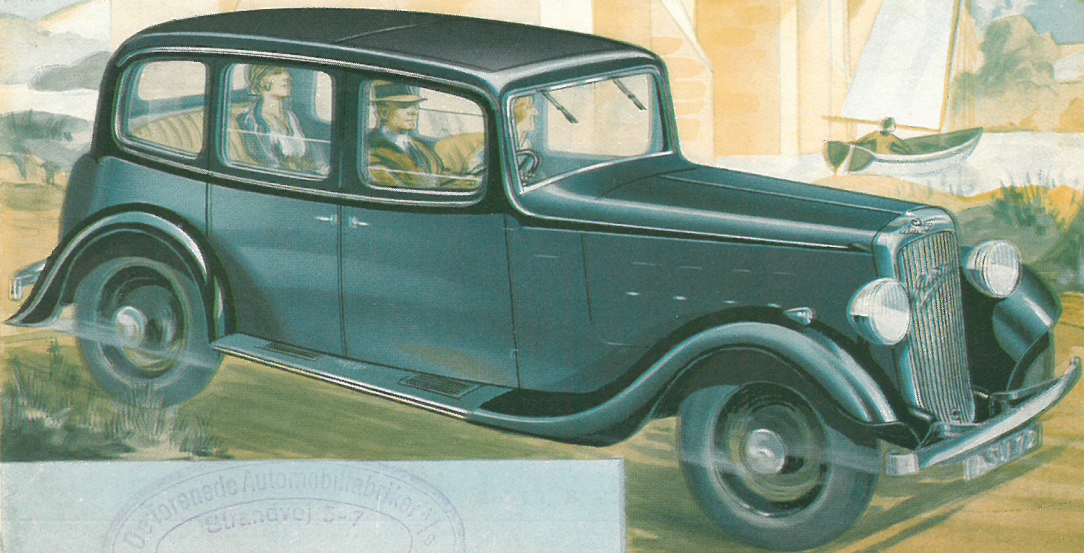
WITH

15·9 - 6 CYL

13·9 - 6 CYL

11·9 - 4 CYL

ENGINE



SPECIFICATION

ENGINE. 15.9 h.p. 6-cylinder monobloc, bore 2.579 in. (65.5 mm.), stroke 3.335 in. (84.63 mm.). Total capacity 104.4 cu. ins. (1,711 c.c.). R.A.C. rating 15.96 h.p., b.h.p. 35 at 3,200 r.p.m. Sports engine 41 b.h.p. at 3,800 r.p.m.

13.9 h.p. 6-cylinder monobloc, bore 2.410 in. (61.25 mm.), stroke 3.335 in. (84.63 mm.). Total capacity 91.2 cu. ins. (1,496 c.c.). R.A.C. rating 13.956, b.h.p. 30 at 3,200 r.p.m. Sports engine 37 b.h.p. at 3,800 r.p.m.

11.9 h.p. 4-cylinder monobloc, bore 2.73 in. (69.3 mm.), stroke 4 in. (101.6 mm.). Total capacity 93.6 cu. ins. (1,535 c.c.). R.A.C. rating 11.9 h.p., b.h.p. 26 at 2,600 r.p.m.

The cylinder head is detachable and the valves are all on the near side. The induction and exhaust manifold is mounted to provide a hot spot. The pistons are of low expansion aluminium alloy. A special cylinder head, down-draught carburetter, and high-lift camshaft are used in the sports engines.

PETROL TANK AND FILLER. The tank at the rear of the car holds 8 gallons (36 litres). The supply to the carburetter is by petrol pump.

COOLING. By thermo-syphon and fan, circulation controlled by automatic thermostat.

LUBRICATION. Lubrication is by a gear pump which forces oil to all bearings, crankshaft, camshaft and connecting rod big ends. A large gauze filter in the oil reservoir is easily removed for cleaning. Chassis lubrication is by grease gun.

TRANSMISSION. The clutch is of the single plate type. The gearbox has four forward speeds and a reverse. Except first, the gears have synchromesh engagement.

On the 15.9 and 13.9 six-cylinder models, the ratios are 20.85, 13.59, 8.64 and 5.5 to 1. On Sports cars they are 5.5, 7.59, 11.88 and 18.26 to 1.

On the 11.9 four-cylinder model they are 18.95, 12.35, 7.85 and 5 to 1.

BRAKES. The four wheel brakes are of the expanding type, smooth and powerful. The pedal or the hand lever applies the brakes to all wheels simultaneously.

STEERING. Steering is of the worm and worm wheel type, with provision for taking up wear.

WHEELS AND TYRES. Magna wheels with 4.75—19 Dunlop tyres. Wire wheels on fixed head saloon.

GENERAL DIMENSIONS. Wheelbase 8 ft. 10 in. (2,694 mm.). Track 4 ft. 2 in. (1,270 mm.). Turning circle 42 ft 2 in (12,852 mm.).

**THE AUSTIN MOTOR Co. Ltd.,
LONGBRIDGE, BIRMINGHAM**

479-483, OXFORD ST., LONDON W.1
(near Marble Arch)

For Manufacturers'
Warranty and
Terms of Business
see Main Catalogue.

SPORTS CARS
WITH
15·9 - 6 CYL
13·9 - 6 CYL
ENGINE

Eleg



Wide doors give walk-in accessibility to the well-upholstered interior, and the rear side and centre arm-rests add to the passengers' comfort.

ance with Dependable

ATTRACTIVE FEATURES

CHOICE OF THREE ENGINES, TWO SIX-CYLINDER AND ONE
FOUR-CYLINDER

CONSTANT MESH GEARS FOR SECOND, THIRD AND TOP

SYNCHROMESH FOR SECOND- THIRD AND TOP GEARS

ALL MAINTENANCE POINTS READILY ACCESSIBLE

DROP FRAME OF VERY STIFF CONSTRUCTION

AUTOMATIC RETURN DIRECTION INDICATORS

INDEPENDENTLY ADJUSTABLE FRONT SEATS

FOOT OPERATED DIP-AND-SWITCH CONTROL

SINGLE BAR BUMPERS FRONT AND REAR

COMPENSATED VOLTAGE CONTROL

ALL FITTINGS CHROMIUM PLATED

LONG FLAT INTERLEAVED SPRINGS

AUTOMATIC IGNITION ADVANCE

RUBBER ENGINE MOUNTINGS

VERY COMPLETE EQUIPMENT

SMOOTH, POWERFUL BRAKES

DUAL WINDSCREEN WIPER

METAL UNIVERSAL JOINTS

SPECIAL SPORTS ENGINES

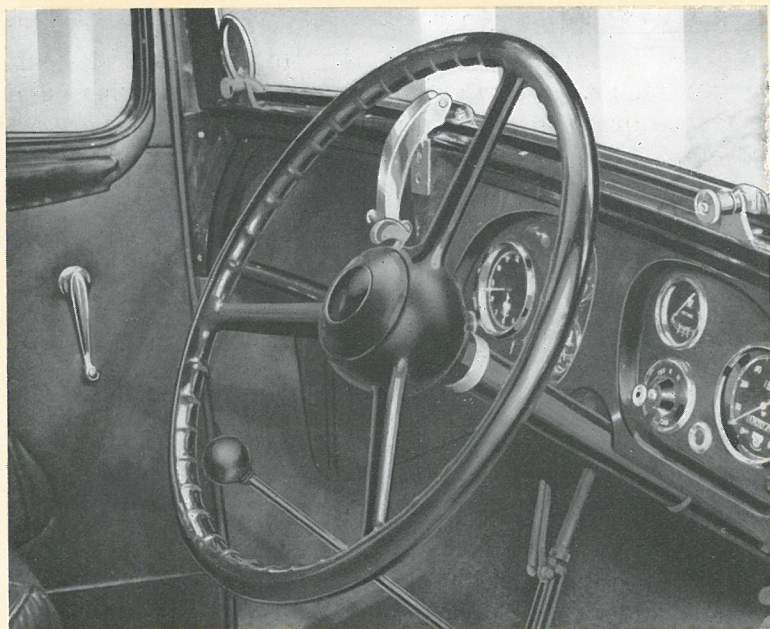
NEW TYPE HEADLAMPS

RAPID ACCELERATION

Britain's Dependable Car

ability

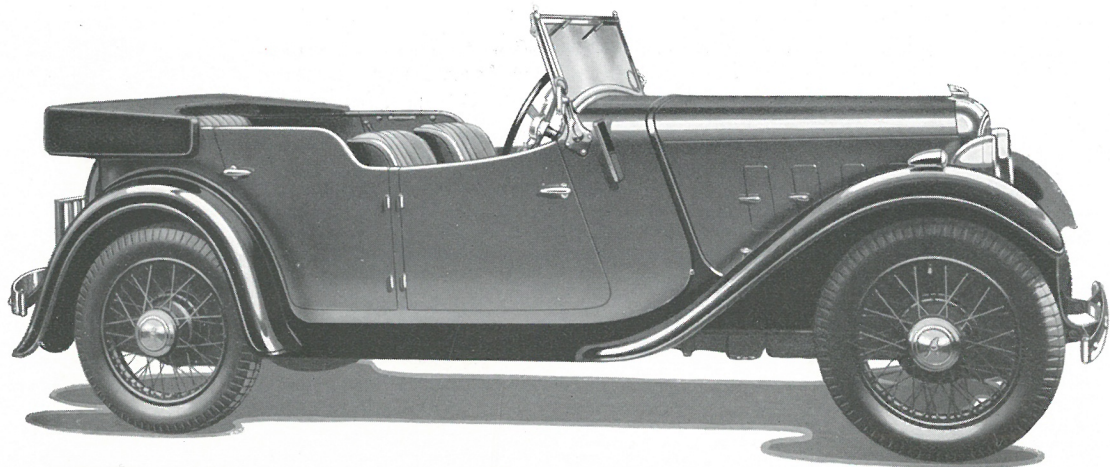
SALOONS
AND OPEN CARS
WITH
15·9 - 6 CYL
13·9 - 6 CYL
11·9 - 4 CYL



All instruments are grouped in front of the driver and a large cubby-hole on the left of the fascia board affords ample accommodation for parcels, etc.

ability

SALOONS
AND OPEN CARS
WITH
15·9 - 6 CYL
13·9 - 6 CYL
11·9 - 4 CYL
ENGINE

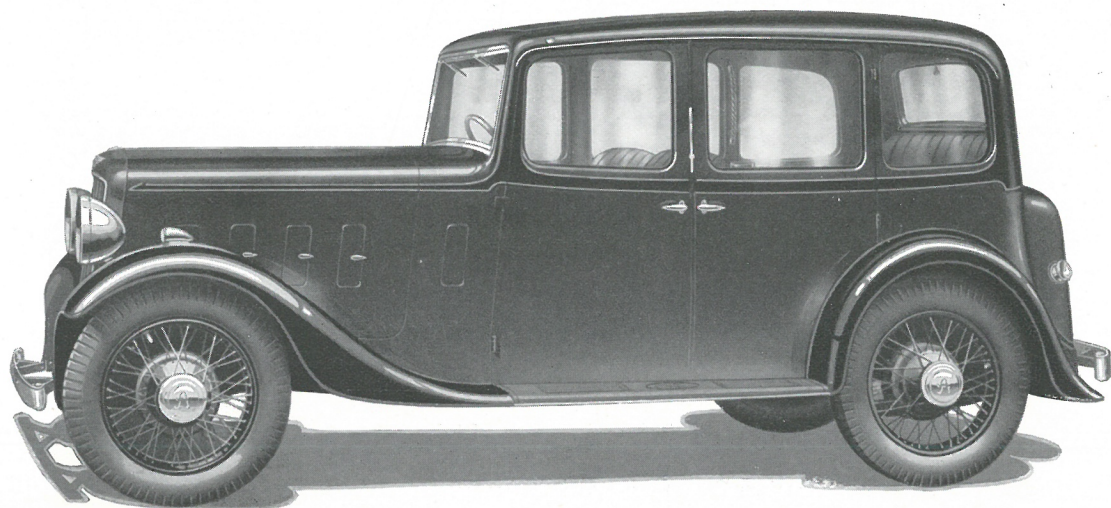


THE NEWBURY SPORTS TOURER

This open four-seater sports tourer can be driven fast in comfort. The two front seats are readily adjustable and a tonneau cover protects the rear of the car when not in use. The rear seat is divided by a fixed arm rest to give the occupants support when cornering. The hinged sloping windscreen will fold over the scuttle if required, and the easily operated hood and side curtains are weatherproof. The side curtains can be stowed away when not required.

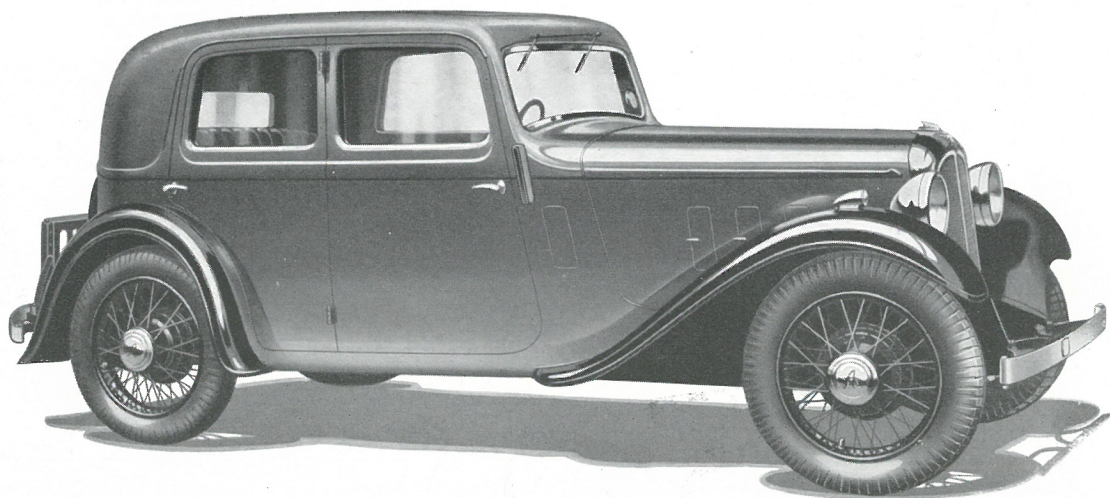
Advance with Dependability

Austin
CARS



SPORTS CARS
WITH
15·9 - 6 CYL
13·9 - 6 CYL
ENGINE

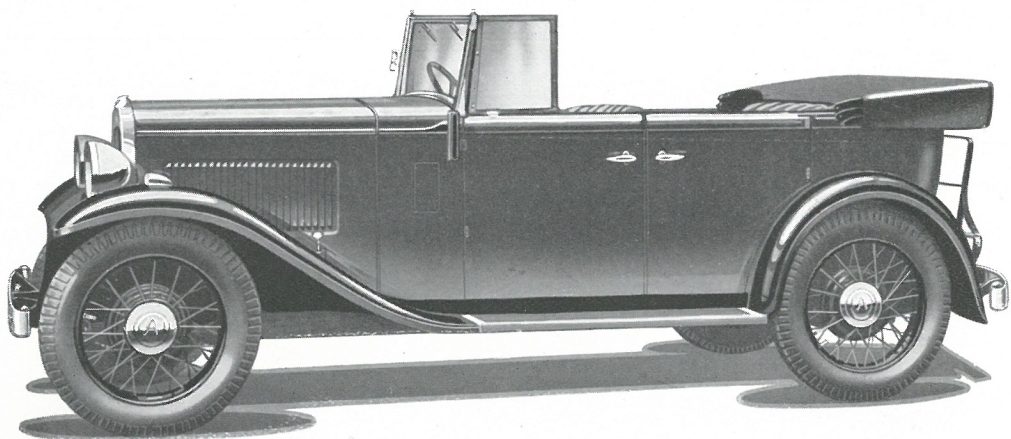
Eleg



KEMPTON SPORTS SALOON

A modern fast and dependable sports saloon with graceful lines and a roomy interior. The upholstery is of best selected hide and the front seats are readily adjustable by the occupants when seated. The wide rear light facilitates reversing and there is also a Pytchley sunshine roof. The dual windscreen wiper ensures clear vision for both passenger and driver.

The special sports engine enables a good road performance to be obtained and the synchromesh gearbox allows quick gear changes to be made.



THE OPEN-ROAD TOURER

A roomy four-seater open car with four wide doors and complete equipment. The front seats can be quickly adjusted to suit individual requirements and there are foot rests for the rear passengers. The hood and side curtains can be quickly manipulated and render the car completely weatherproof.

SIX CYL.

FOUR CYL.

THE ASCOT SALOON

An attractive five-seater six-light family saloon with plenty of head and leg room. The new radiator cowl and wings give the car a pleasing appearance and the smooth rear contours enable the car to be easily cleaned. The cover for the compartment for the spare wheel also serves as the luggage carrier. The front seats are independently adjustable. There is a Pytchley sliding roof.

The strong cross-braced frame, supple springs and hydraulic shock absorbers give comfortable travel over rough roads.

All controls are easy to operate and the illuminated instruments are grouped in front of the driver.

One of three engines, 15.9 or 13.9 h.p. six-cylinder or 11.9 h.p. four-cylinder can be fitted to choice.

There is also a fixed head saloon with less expensive furnishings and without those items marked* in the equipment.

SIX CYL.

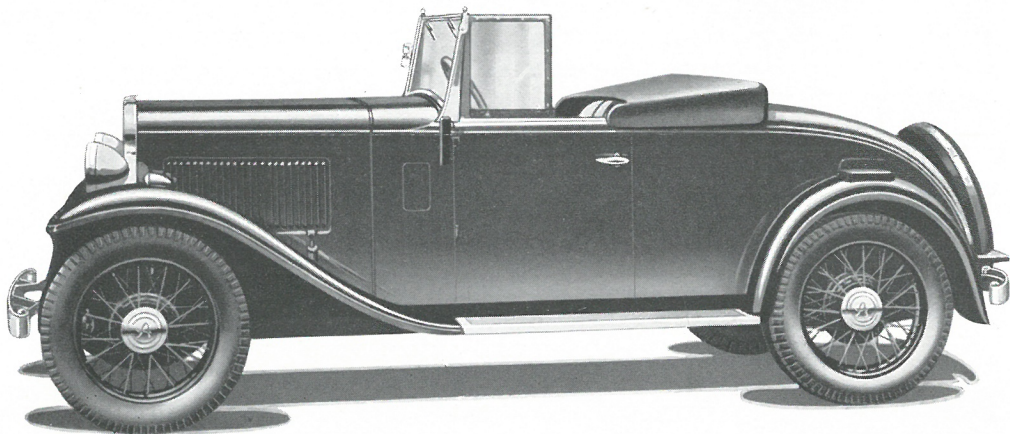
FOUR CYL.

DE-LUXE SALOON ..

FIXED HEAD SALOON

YOU BUY A CAR BUT YOU INVEST IN AN AUSTIN





ETON TWO-SEATER

A smart car that will comfortably accommodate two extra passengers or luggage, in the dickey. The front seats are independently adjustable and the side curtains can be stowed away when not required. The hood is quickly erected and when down is encased in a neat cover.

SIX CYL.

FOUR CYL.