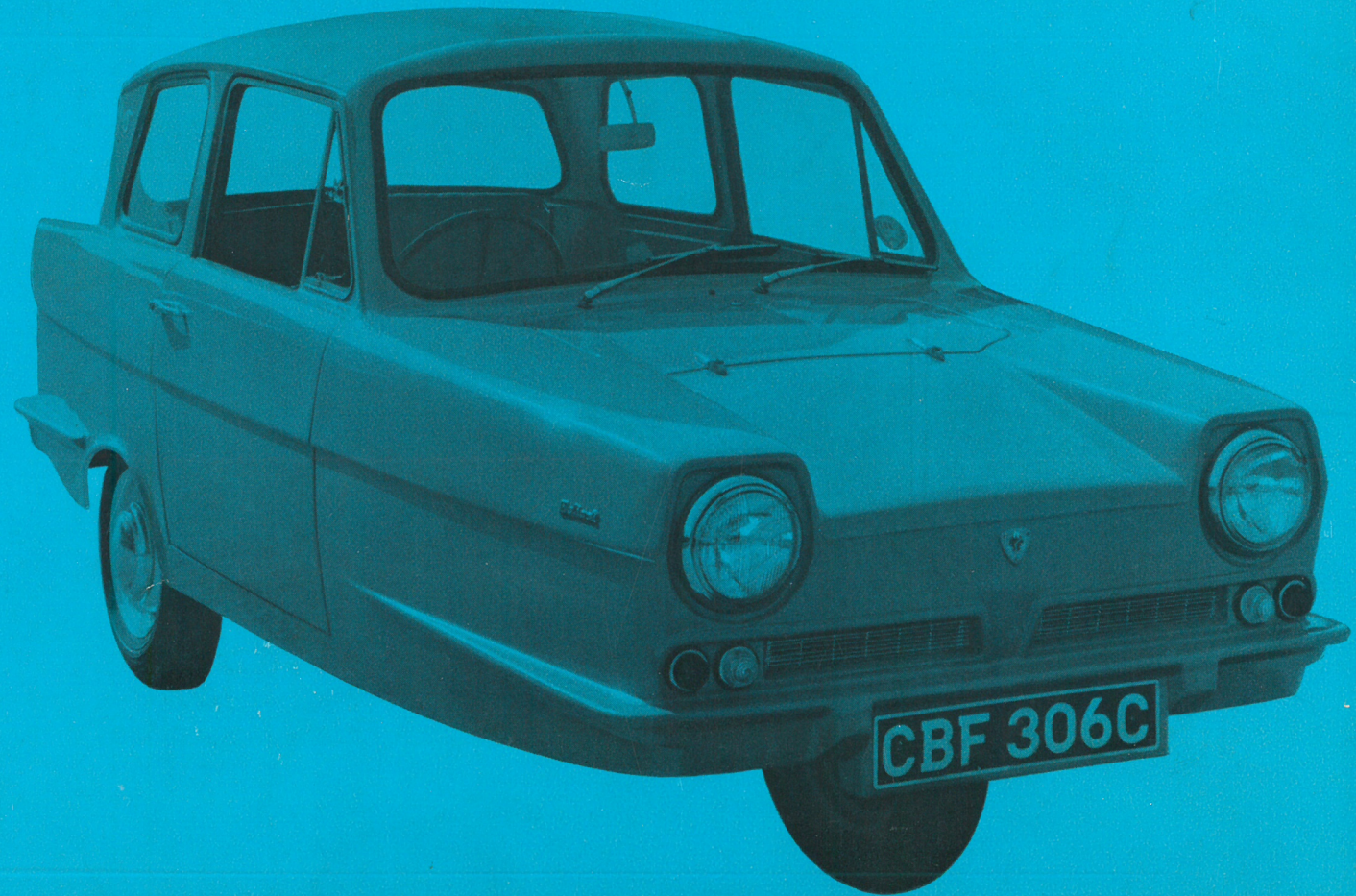


REGAL 3/25 SUPER

RELIANT
POCKET
MONEY
MOTORING

announce a new, re-styled version of Britain's most popular three-wheeled car

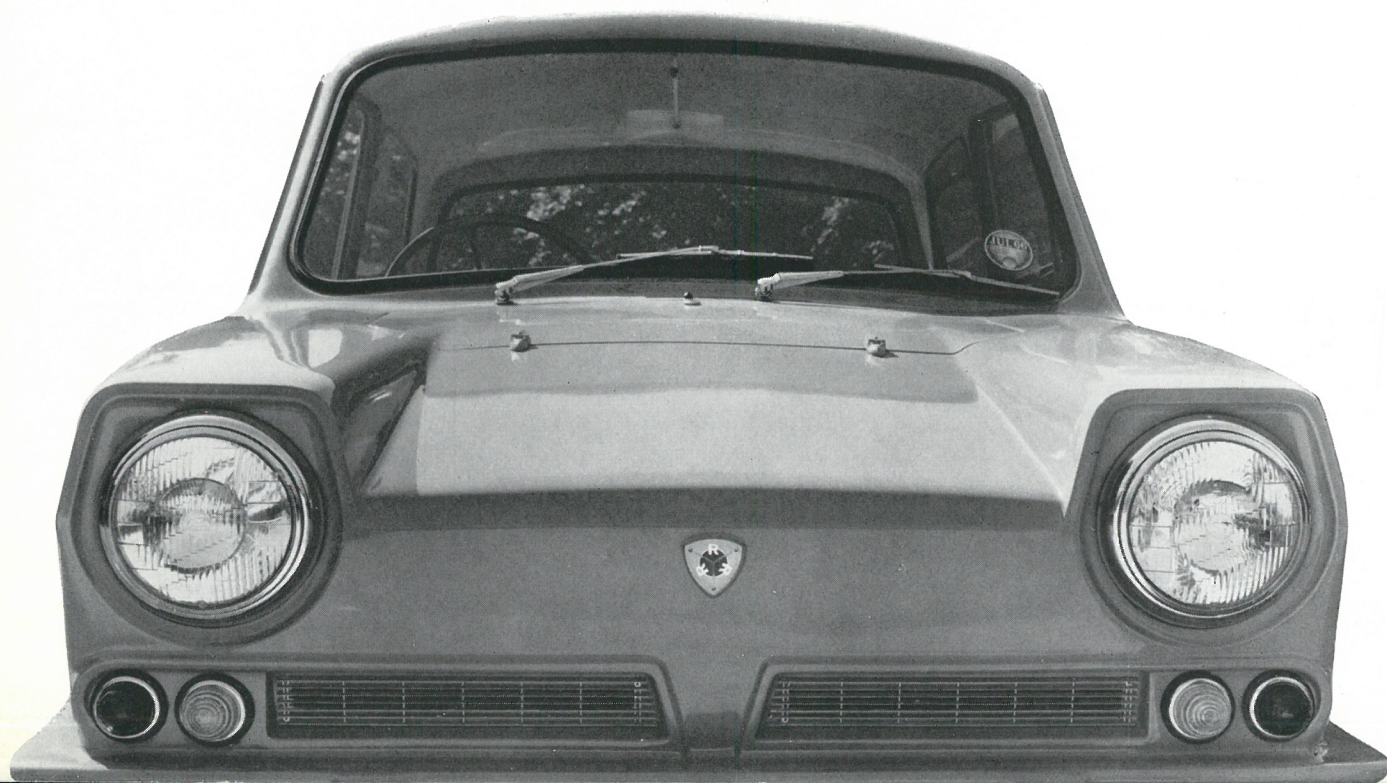


NEW FRONT AND REAR STYLING

for streamlined good looks

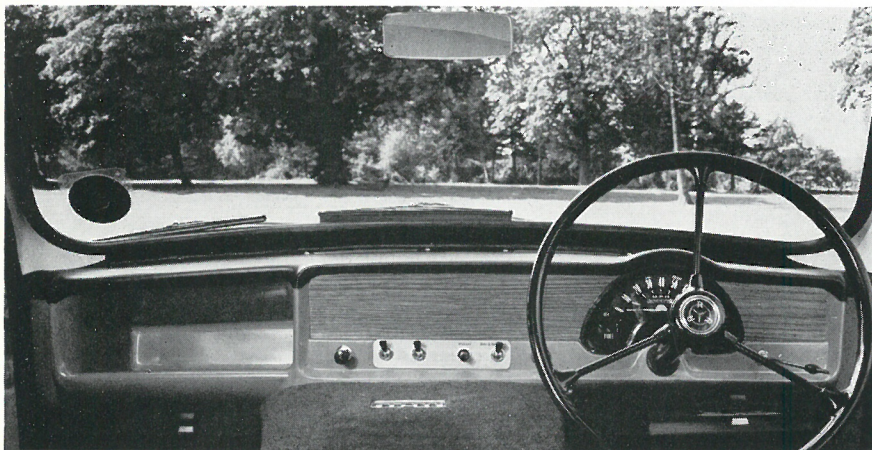
The Regal 3/25 Super offers unbeatable four to five-seater economy. For the 1966 look we have given it *new modern front and rear styling*, simplifying the general lines of the car and strengthening still further the tough glass fibre body. *Refined trim, a new attractive fascia, a re-positioned handbrake and enlarged door pockets* are all new interior features which enhance the Regal's appearance and increase convenience and comfort. To complete the Super's good looks, we are offering it in *a new range of six striking, attractive colours*.

All at the same price as before!

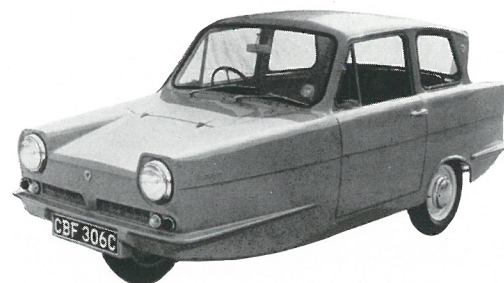


THE NEW LOOK FOR POCKET MONEY MOTORING 65 MPG

NEW FASCIA PANEL for elegance and convenience



Super Savings



Only the Regal offers you these all-Reliant features which mean pocket money motoring and fun for the family:

- **A Motor Cycle Licence** is all you need to drive the Regal
- **65 miles per gallon** gives unbeatable fuel economy
- **You pay only £8 Road Tax** instead of £17 10s. 0d. a year
- **No garage is needed** for the rust-free glass fibre body
- **100,000 miles** is the engine life without major overhaul
- **Reduced Insurance Rates** can be yours with the Regal
- **Tyre costs** are cut by at least 25 per cent

We have proved that these economy features can save you well over £100 a year (or 5/6d. every day).

This is what we mean when we say 'Pocket Money Motoring'.

Add to this some of the Regal's other features, such as nippiness in traffic, supremely easy parking, and a smooth four-speed gearbox. Remember the lively all-aluminium Reliant engine, and the strong steel Reliant chassis. It's time you had a test drive in the Regal.

Write for further information to:

The Sales Director, Department BS, Reliant Motor Company Limited, Tamworth, Staffordshire
Telephone: Tamworth 4151 (10 lines)

REGAL 5 cwt. Van

Profit by our experience, which has proved that for sheer economy, toughness and reliability the 3/25 Van cannot be beaten by any commercial vehicle in its class. With all the Reliant advantages, including 65 m.p.g., the Regal 3/25 5 cwt. Van is a world-beater



SPECIFICATION Regal Saloon and Van range

Engine. Reliant four cylinder high efficiency overhead valve, water cooled. Bore 2.2 in. Stroke 2.4 in. Capacity 600 c.c. Maximum B.H.P. 24.2 at 5,250 r.p.m. Compression ratio 7.8:1. Detachable die cast aluminium cylinder head with cast iron valve guides and sintered iron seats. Die cast aluminium cylinder block and crank case with removable wet liners. Forged steel super finished crankshaft mounted on three steel-backed main bearings. Engine and gearbox mounted on rubbers at three points. *Lubrication.* Submerged vane-type oil pump. Capacity of sump, five pints. *Cooling System—*Pump assisted circulation and two-bladed fan driven by belt from engine pulley. *Fuel System—*'Solex' downdraught carburettor, 'A.C.' petrol pump. Petrol tank capacity, 6 gallons. *Ignition—*by 12-volt battery and coil. *Clutch—*Borg and Beck dry single plate type.

Transmission. Four forward speeds and reverse, synchromesh on top, second and third. Ratios: Top, 4.375:1; 3rd, 6.34:1; 2nd, 10.8:1; 1st, 18.66:1; Reverse, 24:1; needle bearing propeller shaft to spiral bevel rear axle of semi-floating type. (Van ratios: Top, 5.14:1; 3rd, 7.493:1; 2nd, 12.649:1; 1st, 21.932:1; Reverse, 28.234:1.)

Brakes. Hydraulically operated internal expanding to all wheels.

Steering. Burman Douglas type. Right- or left-hand steering. *Suspension—*Patented leading arm suspension to front wheel controlled by heavy-duty combined coil spring and hydraulic suspension unit. Long semi-elliptic rear springs, rubber mounted, with double acting hydraulic shock absorbers.

Chassis. Box section, pressed steel with tubular braced cross members, forming a very rigid construction.

Electrical Equipment. 12-volt Lucas system. Built-in headlamp with sealed beam units controlled by foot-operated dipping switch. Interior light. Combined stop tail and rear flasher lamps. Ignition key starting. Self-parking twin windscreen wipers.

Bodywork. Coachbuilt, all glass fibre full four-seater saloon embodying latest unit construction technique for increased strength and rigidity. Completely corrosion-free and highly resistant to incidental damage. Two wide-opening doors with wind-up safety glass windows and front swivel quarter lights. Toughened safety glass curved windscreen and side and rear windows. Rear opening boot of 8 cu. ft. capacity. (Van capacity: 50 cu. ft.)

General Equipment. Tool outfit. Heater and demister.

Optional Equipment. Spare wheel, safety harness. Over-riders.

General Dimensions. Wheelbase 76 in. (1,930 mm); Track 46 in. (1,170 mm); Turning Circle 24 ft. (7,320 mm); Ground Clearance 6 in. (152 mm); Overall length 135 in. (3,430 mm); Overall width 58½ in. (1,484 mm); Overall height 57 in. (1,448 mm).

Prices and specification are liable to alteration without notice.

The Reliant Motor Company Limited
Tamworth, Staffordshire
Telephone: Tamworth 4151 (10 lines)

Prepared and designed by
Adrian Ball & Associates Limited,
Fleet Street, London EC4
Printed by Newhall Press Limited, London (366/15M)