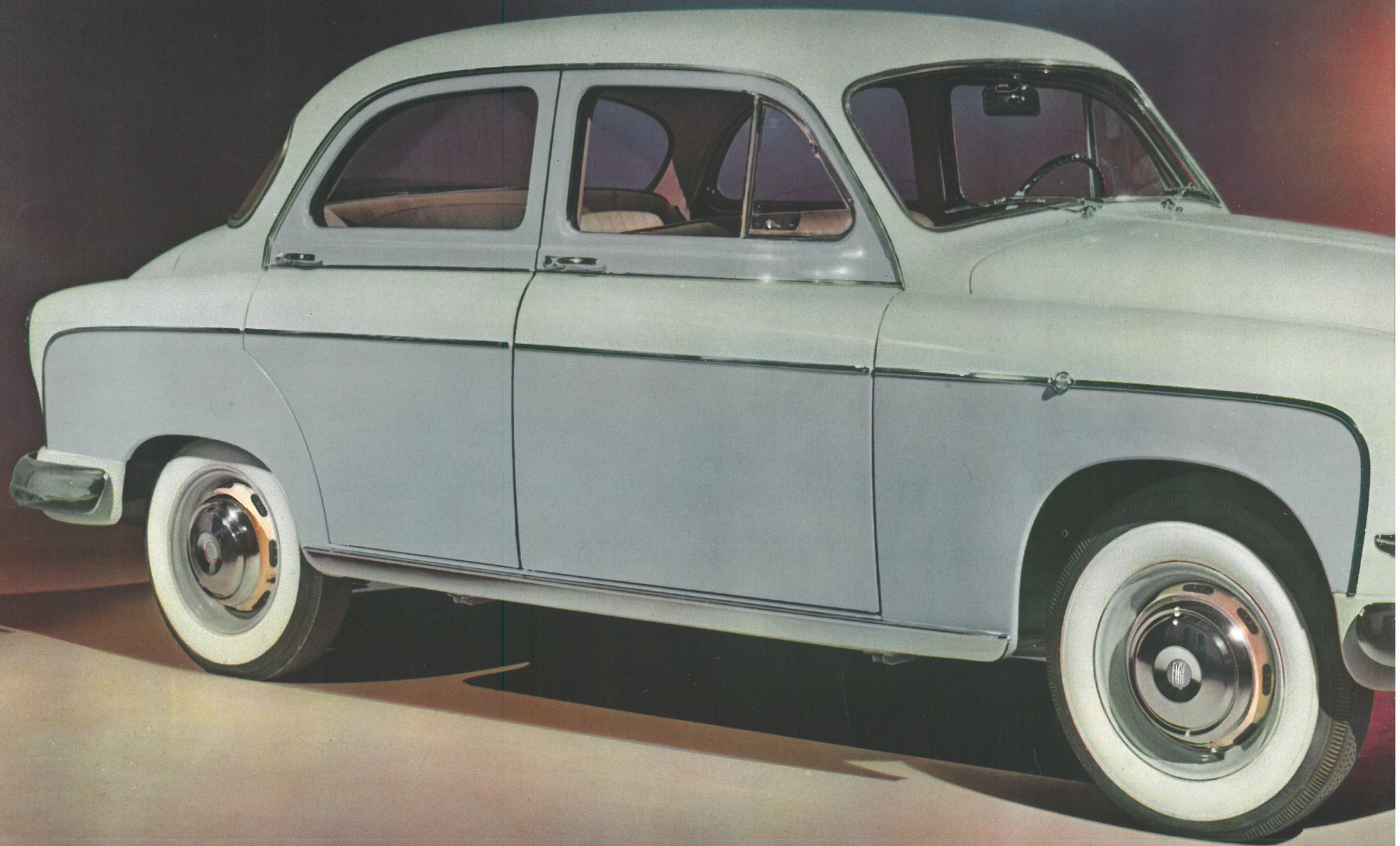


Fiat 1400 B

MODEL VENEZIA



with petrol engine
with diesel engine



Fiat 1400 B

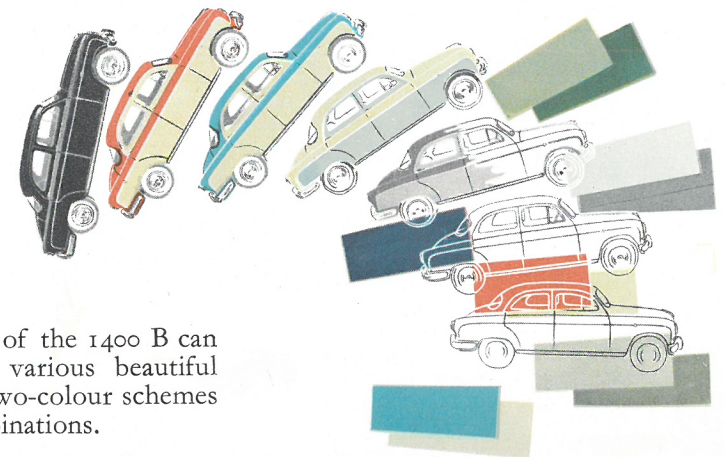
with petrol engine

speed: approx. 85 miles (135 km) per hr.

The **1400 B** is a new edition of Model 1400 ... which means that all the latest refinements of design and improvement in quality have been incorporated in a high class vehicle which has become increasingly popular in all countries.

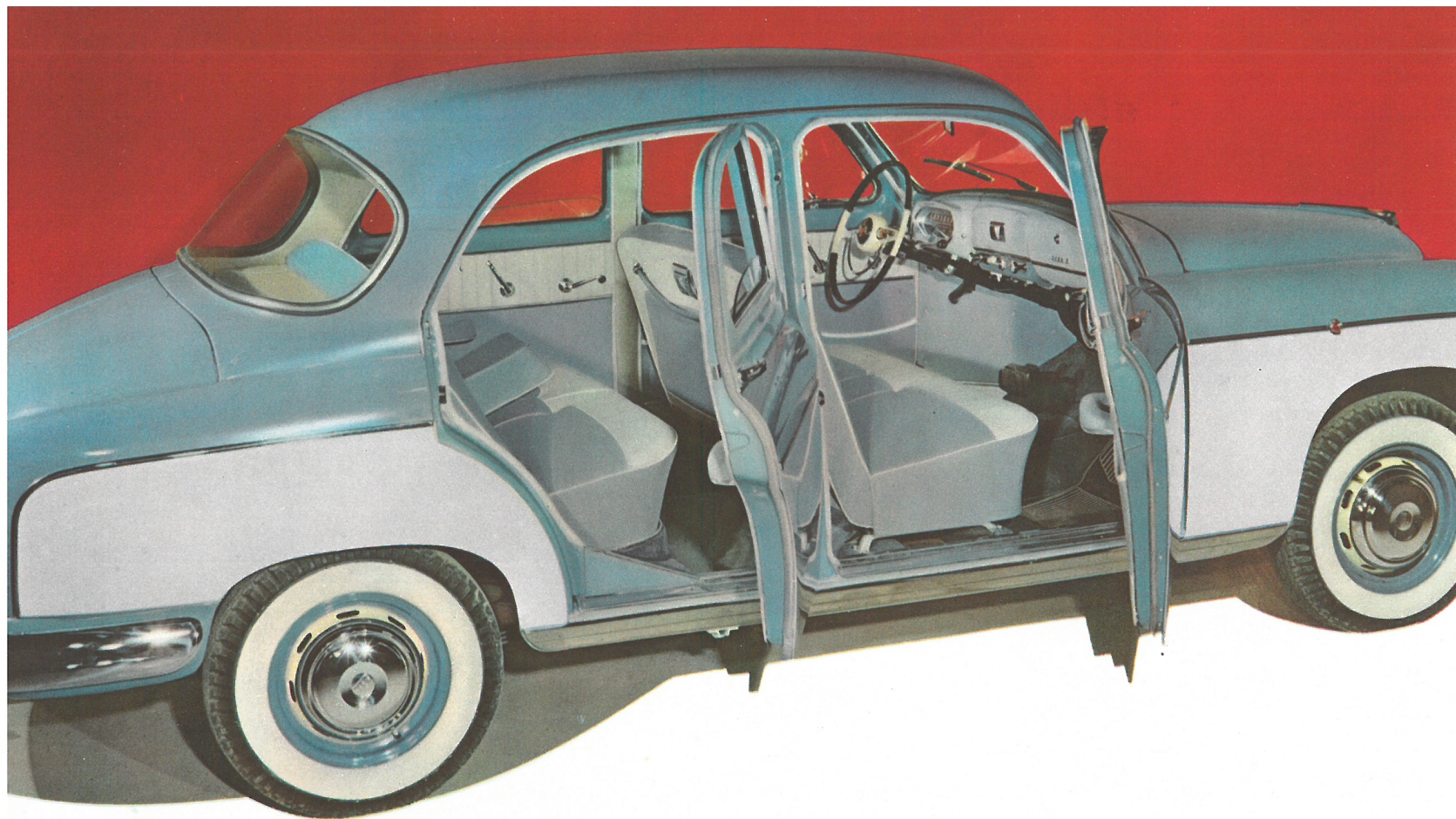
Powerful engine (58 b.h.p.); precision in the execution of mechanical parts; more handsome lines; greater comfort.

1400 B: A sturdy, spacious, attractive and comfortable 4-6 seater. Fiat reliability combined with modern elegance.



The bodywork of the 1400 B can be supplied in various beautiful shades, also in two-colour schemes in several combinations.



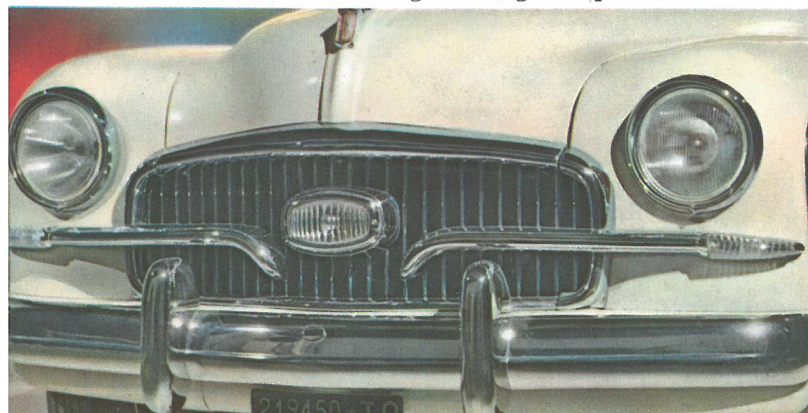


an up-to-date

***there is ample acc
1400 B and plenty***

***very comfo
for either 4***

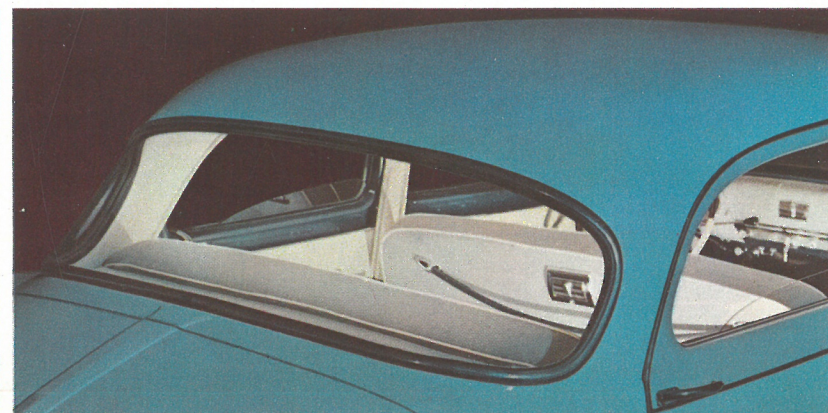
front of car in attractive new lines
with flush fitting antifog lamp



spray-type windscreen wiper
ensures uninterrupted visibility



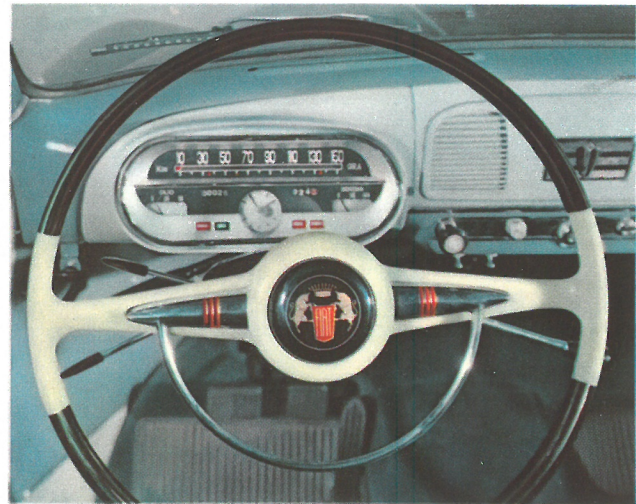
curved rear window, of increased
dimensions



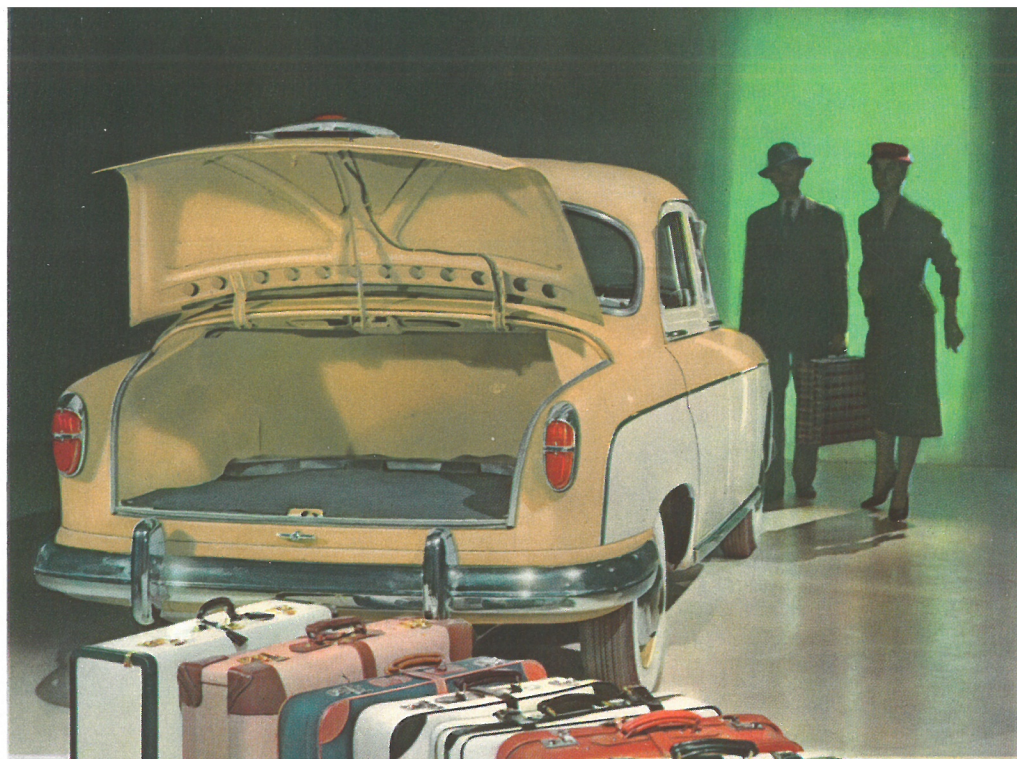
car in every way: comfort, elegance

**ommodation in the
of interior light**

**rtable seats
or 6 persons**



new instrument panel and two-colour steering wheel

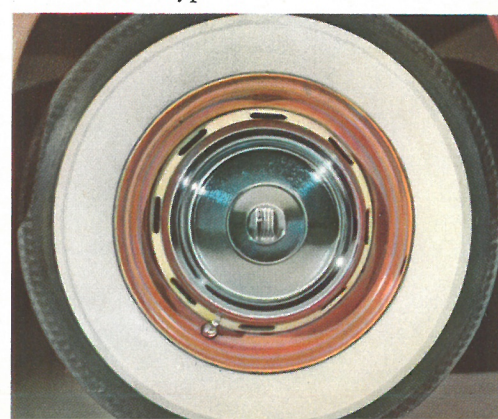
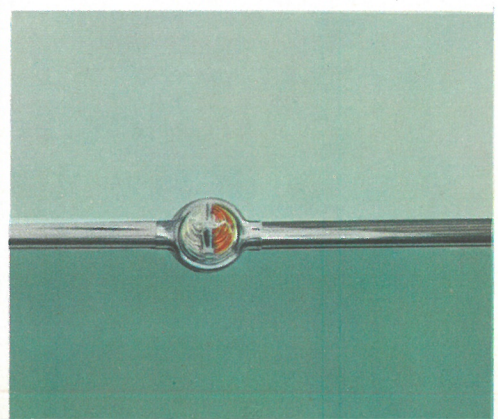


the spare wheel, situated under the luggage compartment floor, enables maximum use to be made of the space available for luggage storing

new type of wheel trims

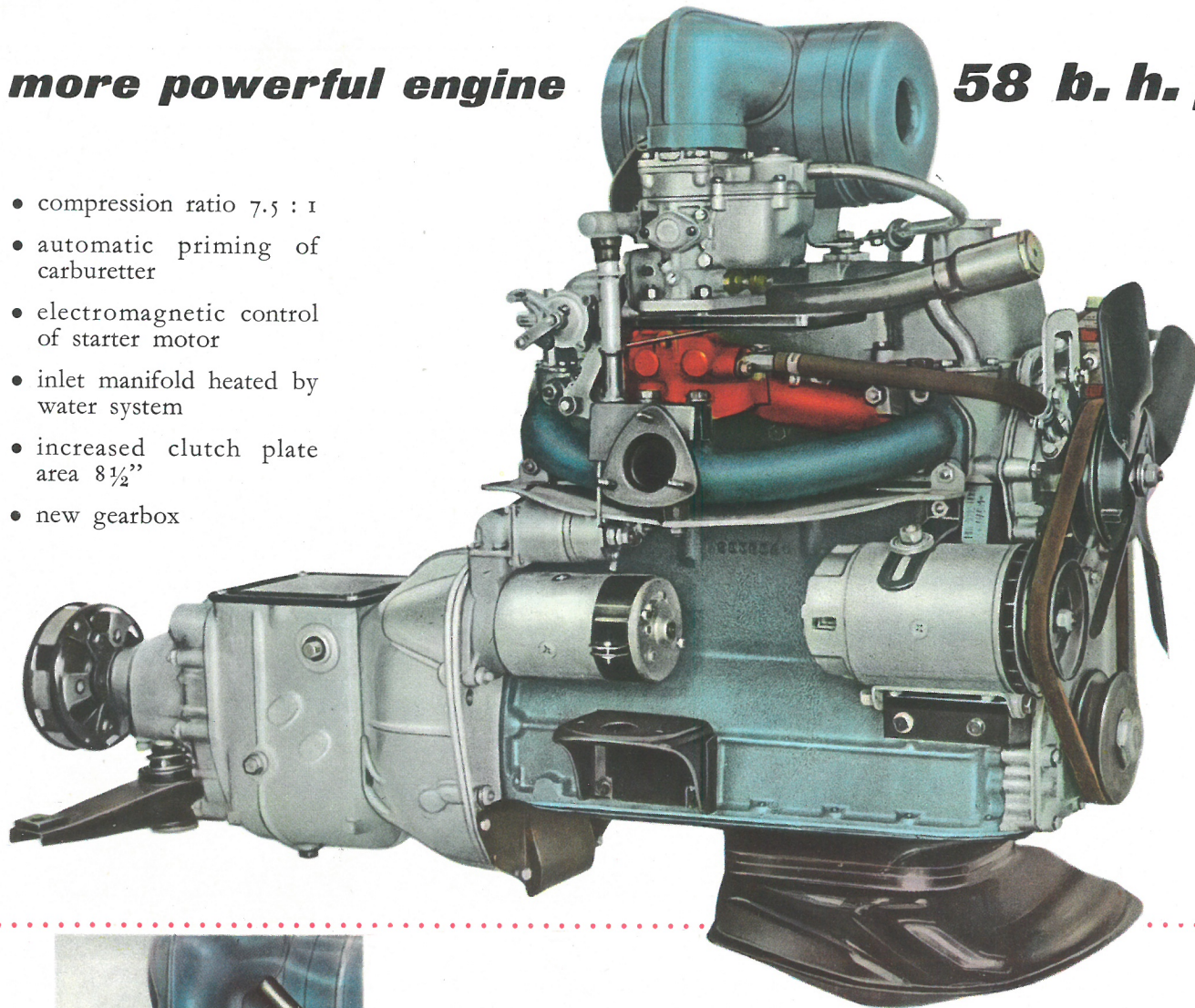
centre armrest to rear seat, and "courtesy" lights

flashing-light indicators on both sides of the car



more powerful engine

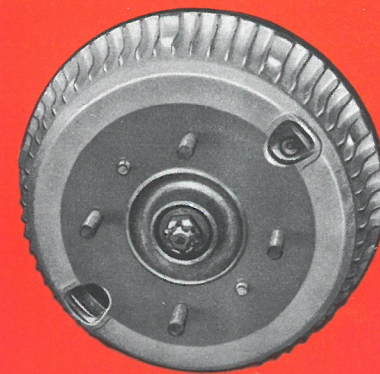
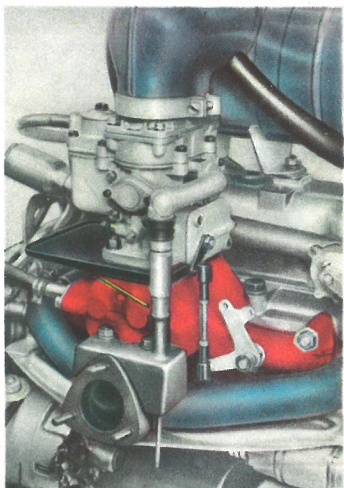
- compression ratio 7.5 : 1
- automatic priming of carburetter
- electromagnetic control of starter motor
- inlet manifold heated by water system
- increased clutch plate area 8½"
- new gearbox



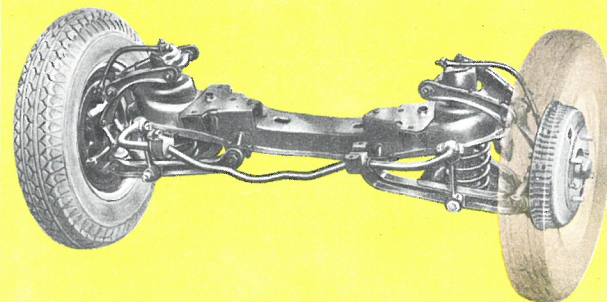
58 b. h. p.

automatic control of carburetter

the new starting device for the carburetter eliminates manual control; this device automatically feeds the correct supply of fuel to the carburetter when starting the engine under ordinary atmospheric conditions



increased efficiency of brakes, resulting from a new system of ventilation



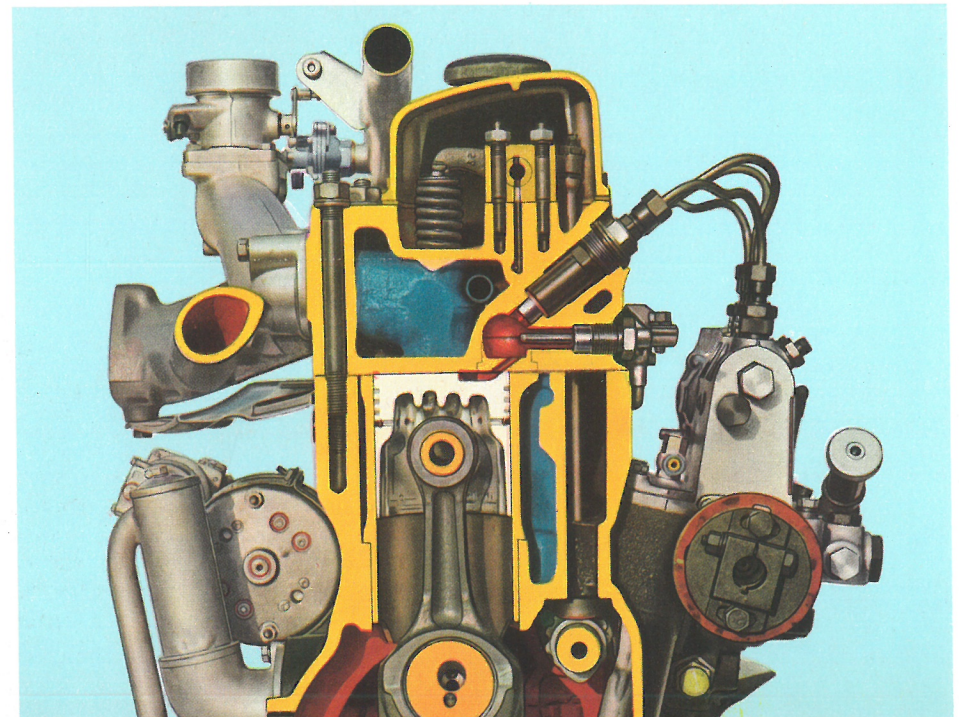
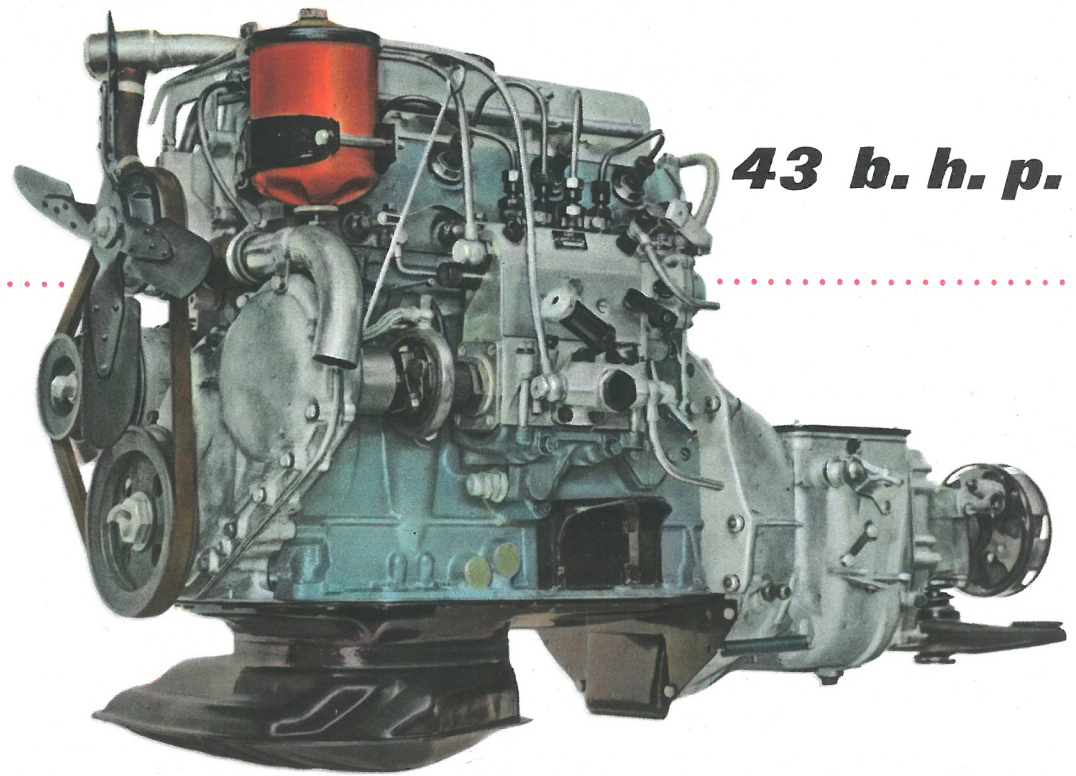
improved suspension, with increased flexibility of the front springs; smoother steering by improvements to the steering assembly and front suspension

Fiat 1400 B

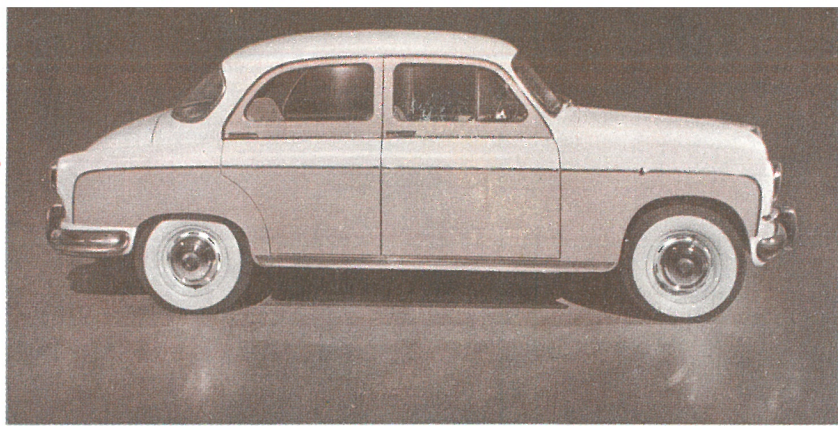
43 b. h. p.

with diesel engine
speed: 62 miles (100 km) per hr.

The **1400 B**, like its predecessors, can also be supplied with a **Diesel engine** which, whilst retaining the overall quality of the vehicle, provides considerable economy in running costs. The **1400 B Diesel**, which is designed for use with fuel oils, consumes only 1 gallon of fuel every 47 miles and the cost of this fuel is lower than that of petrol. As regards chassis and bodywork, the 1400 B Diesel is identical to the petrol-driven model and gives the same silent performance.



A new combustion chamber has been incorporated in the 1400 B Diesel



KOLDING AUTO LAGER
FIAT og SIMCA Forhandler
HADERSLØVVEJ 124-126
Tlf. KOLDING 3848

technical features

Integral construction: Wheelbase, 2,65 m (8' 8 1/2"). Front track 1,326 m. (4' 4 1/4"), rear 1,320 m. (4' 4").

Engine: 4 cylinders. Capacity 1395 cc. 82 mm bore, 66 mm stroke. Compression ratio 7,5 : 1. Output at 4600 r.p.m. 58 b.h.p. Cast iron cylinder block. Special cast iron renewable cylinder liners. Aluminium cylinder head. Three-bearing crankshaft. Thin walled main and connecting rod bearings, lined with antifriction shells. Overhead valves. Cooling water circulated by centrifugal pump. Down-draught twin choke carburetter. Automatic priming of carburetter. Inlet manifold heated by water system. Diaphragm fuel pump. Battery ignition. Forced lubrication by gear pump. Engine supported on flexible mountings. Electric starter.

Clutch: single dry plate.

Gearbox: four speeds and reverse; synchronised 2nd, 3rd and 4th gears. Gear control lever under steering wheel.

Transmission in two parts: the front section connected to the gearbox by flexible coupling and supported in the centre by roller bearing; the rear part with cardan joints at both ends.

Rear axle: with hypoid crown and pinion. Ratio: 9 : 40.

Front suspension: independently sprung wheels, with coil springs and hydraulic telescopic double acting shock-absorbers. Stabiliser bar.

Rear suspension: by coil springs and longitudinal leaf springs, transverse anti-sway bars hinged to axle and coupled to the body by triangular brackets. Hydraulic, telescopic, double acting shock absorbers.

Steering: by worm and roller.

Differences in Specification between the 1400 B Diesel Engine and the 1400 B Petrol Engine

Diesel engine: 4-cylinder, capacity 1901 cc., bore 82 mm, stroke 90 mm. Output at 3200 r.p.m., 43 b.h.p. Cast iron cylinder block. Special cast iron renewable cylinder liners. Single piece cast iron cylinder head and combustion chambers. Steel, three-bearing, crank-shaft. Overhead valves. Fuel supply by special assembly consisting of feed pump, injection pump and pneumatic governor. Oil bath air filter.

Rear axle: Hypoid crown and pinion assembly. Ratio: 4,1 : 1.

Hydraulic brakes: on the four wheels. Handbrake on the transmission. Aluminium brake drums with cooling fins and special cast iron liners. Ventilated brake drums.

Wheels: with 4 1/2 k. rims and 5,90 x 14 low pressure tyres. The spare wheel is stowed under the luggage compartment.

Fuel tank at rear, capacity 55 litres with electric petrol gauge and reserve indicator.

Electrical equipment: 12 volt, 300 Watt dynamo with separate C.V.C. unit. Starter motor with electromagnetic coupling. Ignition, indicators and starter switch operated by the same key. Harmonised train electric horns, and flashing light indicators controlled from the steering wheel. Twin electric windscreen wiper blades with automatic parking of blades. Light behind rear-view mirror switches on automatically when driver's door is opened. Interior light automatically switches on when rear doors are opened. Engine housing lamp lights up automatically when bonnet is opened. Direction indicator control is cut out automatically when steering wheel returns to straight ahead position. Headlamp dipper controlled by lever under steering wheel. Double filament headlamps. Front parking and flashing lights. Rear parking, direction and "stop" lights and prismatic reflector. Two-colour flashing lights (fender). Tail lamp with prismatic reflector; luggage compartment light. Antifog lamp in central position. Grouped instruments including linear scale speedometer and self-winding clock.

Spray-type screen washer, vacuum operated.

Heating & air-conditioning equipment: Heating is regulated by exterior air intake. A variable speed electric fan is employed to prevent condensation and frost formation on the windscreen and for cooling the interior in summer.

Radio: Optional, at extra charge.

Wheels: 6,40 x 14 very low pressure tyres.

Electrical equipment: 24 volt, 350 W. dynamo, with separate C.V.C. unit. 46 amp battery. Starter motor with electromagnetic coupling controlled by the engine starter switch. Ignition and indicator switch controlled by the same key. Grouped instruments including ordinary speedometer and clock.

Spray-type windscreen wiper, pump operated.

Body: Engine starter switch and ignition warning light on instrument panel.

The descriptions and illustrations in this catalogue are given merely as general information and are not binding. FIAT therefore reserve the right, while maintaining the fundamental features of the models here described and illustrated, to effect at any time and without notice, those alterations to parts, fittings or equipment of accessories that they may eventually think fit to make by way of improvement, or for any reason whatsoever of a manufacturing or commercial nature.