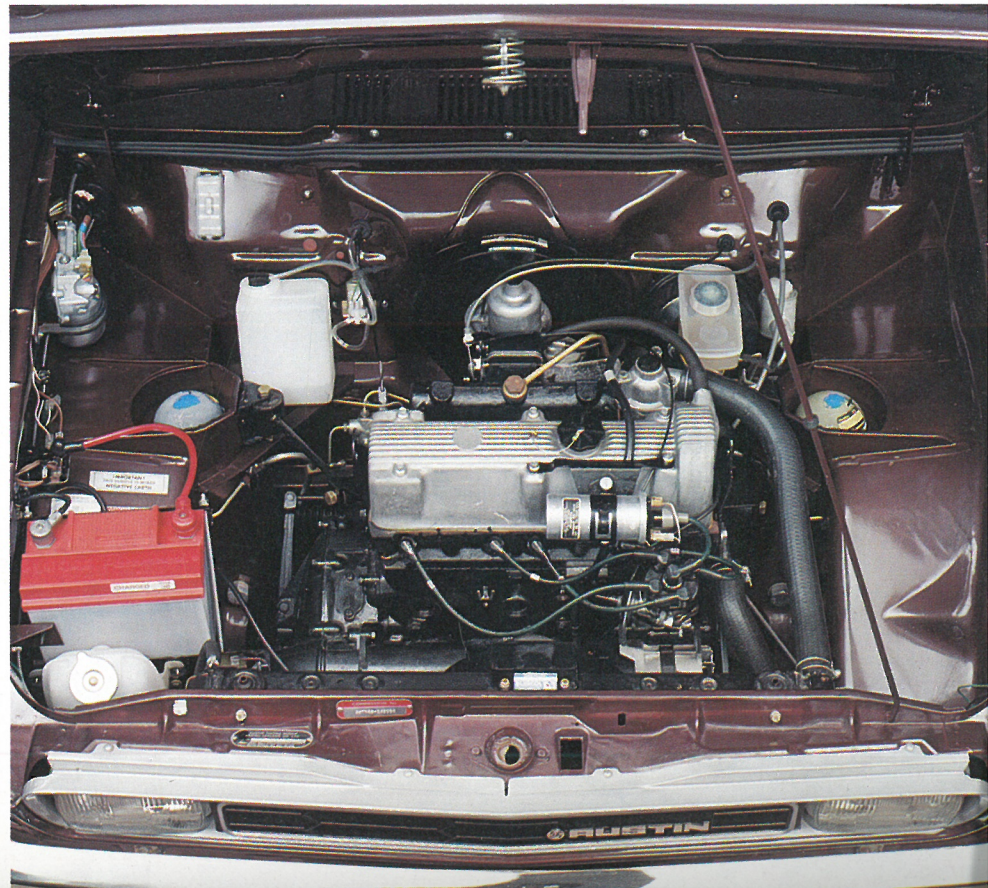


Allegro 2 1500 Four door SDL







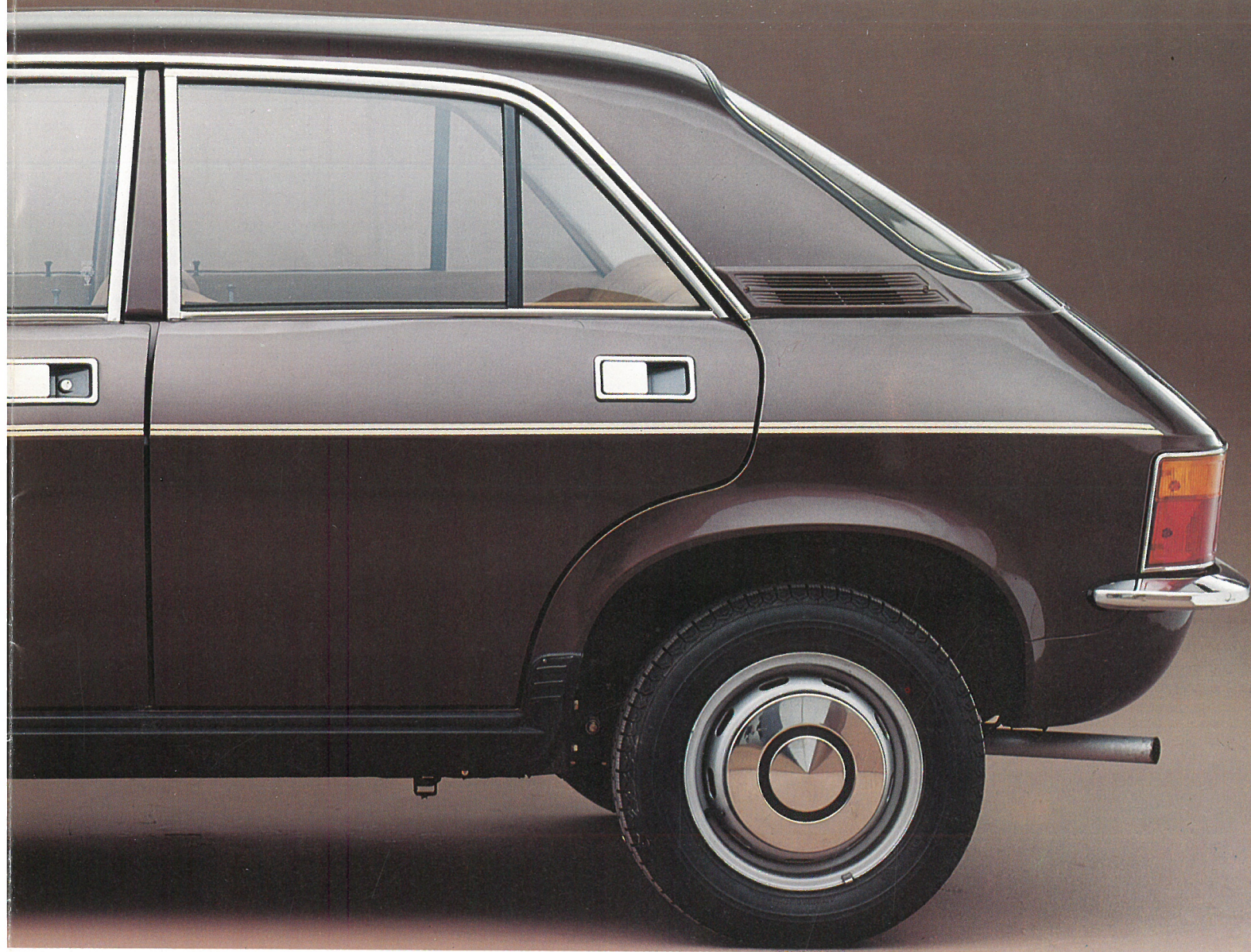






Austin Allegro means more space

Difficult to believe? Prove it by sitting in the back seat of an Austin Allegro 1500 Super de Luxe, and see for yourself just how much extra room there is for your legs. Stretch out—it's really there. Now it's in the driver's seat—it's there too. In the front, there are big comfortable reclining seats. You have all the controls at your fingertips. Heater, with 2-speed blower, 2-speed windscreen wipers, electric windscreen washers and a heater for the rear window, they're all within inches of your hand, the fascia panel is newly-designed, so you can read the



e and more safety for your money.

The modern design of the Austin Allegro 1500 Super de Luxe combines elegance with spaciousness and safety. Look at all the luggage you can fit into the boot. Enough for the whole family, and more. Safety? It has two braking systems, one backing up the other, and Servo-assisted front disc brakes. Burst-proof locks on all doors, and child-proof locks on the rear doors. Drive it, and see how the front-wheel drive pulls you safely round even the tightest corner, while you rest snugly in your seat. Feel the luxury of Hydragas suspension, unique on the Allegro. Convinced?

Specification

Engine:

Four-cylinder, transverse, overhead camshaft. Bore 76.2 mm., stroke 81.28 mm.; capacity 1485 c.c.
†68 b.h.p. at 5,500 rev./min. Compression ratio 9.0:1.
Single S.U. HS6 carburetter.

Clutch:

Diaphragm-spring, 0.20 m. diameter.

Gearbox:

Five-speed, synchromesh on forward gears. Ratios: first 3.202:1; second 2.004:1; third 1.372:1; fourth 1.00:1; fifth 0.869:1; reverse 3.467:1.

Final Drive:

Front-wheel drive, open shafts with universals. Ratio 3.647:1.

Steering:

Rack and pinion. Safety steering-column.

Road Wheels:

Pressed-steel disc, 145-13 radial-ply tyres.

Brakes:

Hydraulic, servo-assisted, 0.25 m. diameter discs at front, 0.20 m. diameter drums with leading and trailing shoes at rear.

Suspension:

*Hydragas suspension units inter-connected front to rear.

Electrical:

12-volt, 40-amp. hr. battery. Electric windscreen washer. Two-speed windscreen wipers. Electrically heated rear window. Hazard warning lamps. Cigar lighter. Twin horns. Reversing lamps.

Instruments:

Speedometer. Water temperature and fuel gauges. Warning lamps to show low oil pressure, headlamp main-beam, flashers working, and no charge.

Coachwork:

Four-seater, four-door Super Saloon. Reclining front seats.

Dimensions:

Overall length: 3.85 m.

Overall width: 1.61 m.

Overall height: 1.39 m.

Optional Extras:

Head restraints. Metallic paint finish. Automatic transmission.

* 'Hydragas' is a registered Trade Mark

† DIN 70020

These specification details do not apply to any particular vehicle which is supplied or offered for sale. The manufacturers reserve the right to vary their specification with or without notice and at such times and in such manner as they think fit. Major as well as minor changes may be involved. Therefore, although every effort is made to ensure the accuracy of the particulars contained in this brochure, neither the Company nor the Distributor or Dealer by whom this publication is issued shall be liable for any inaccuracy in any circumstances whatsoever.

